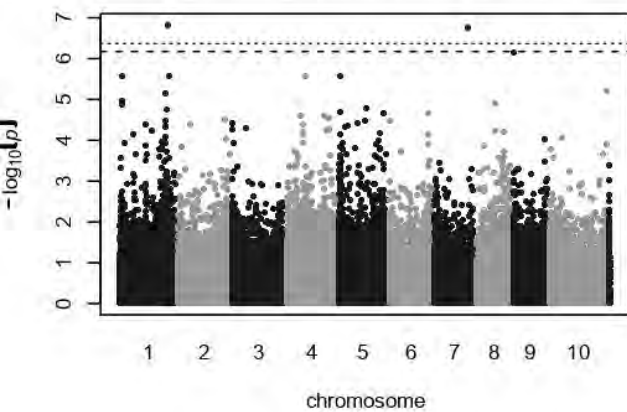
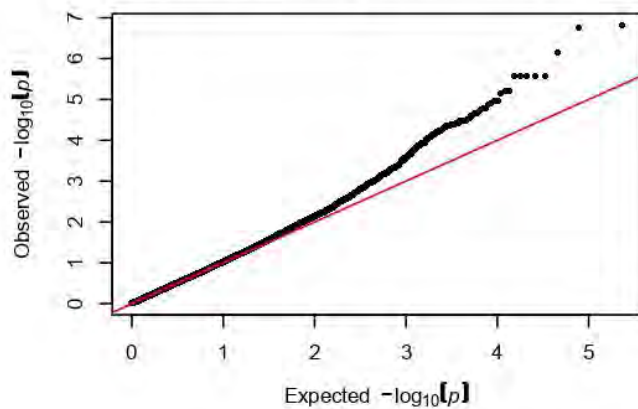


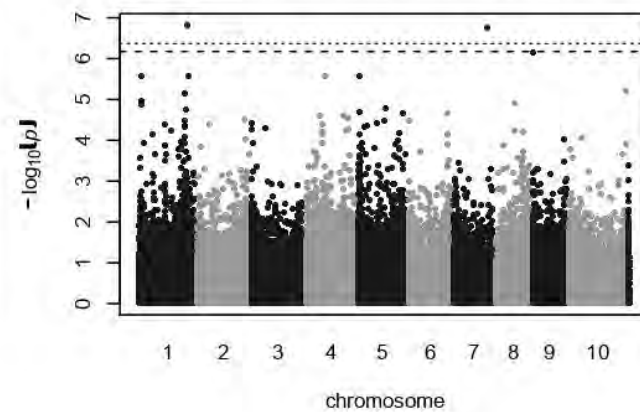
alpha-pinene norm (standard MLM)



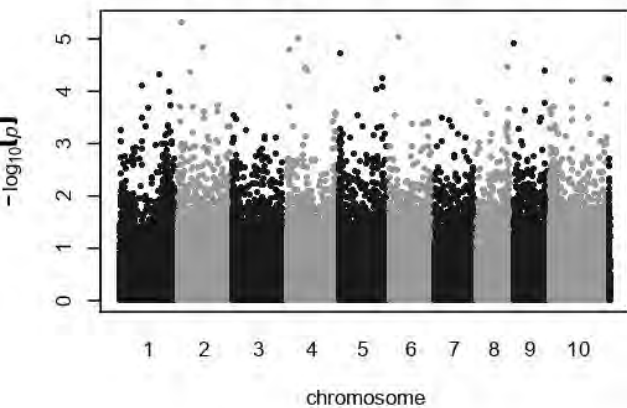
alpha-pinene norm QQ plot (standard MLM)



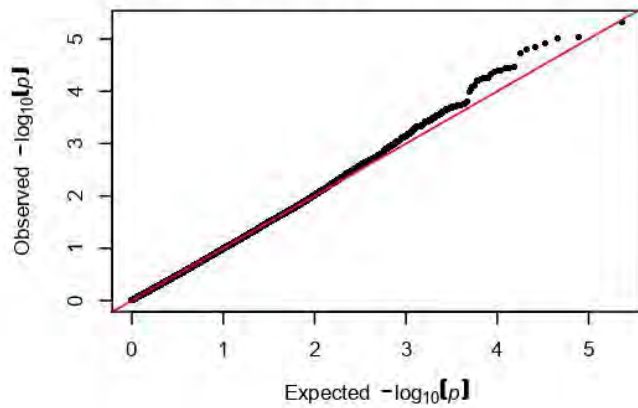
alpha-pinene norm (optimal MLMM)



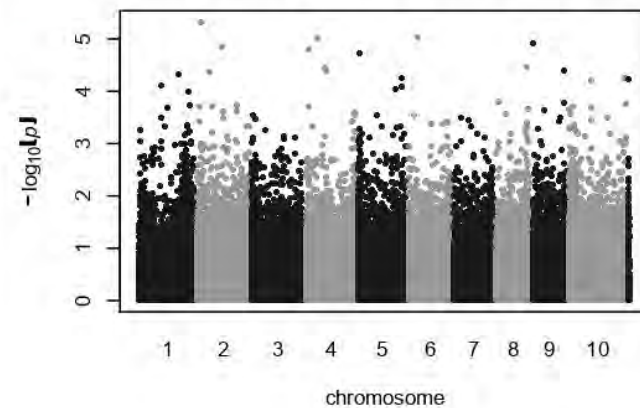
beta-pinene norm (standard MLM)



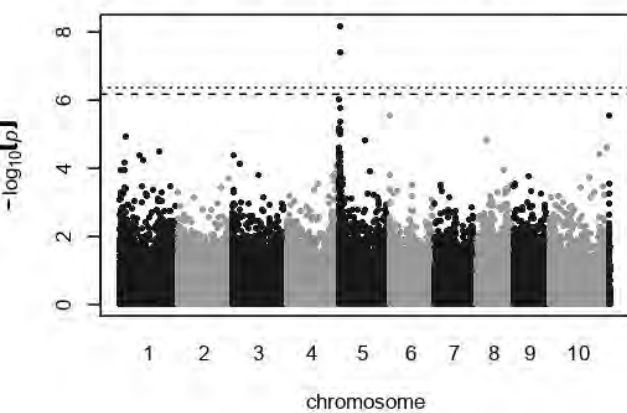
beta-pinene norm QQ plot (standard MLM)



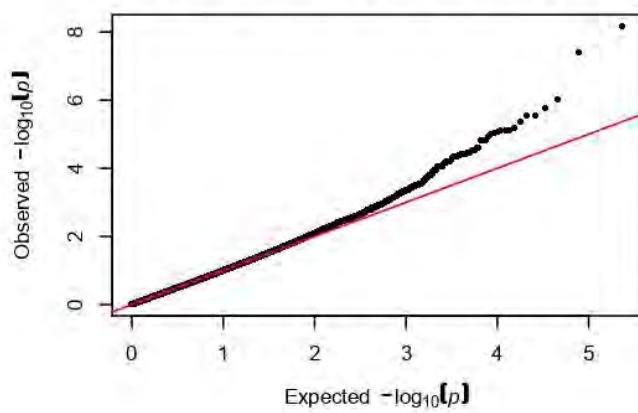
beta-pinene norm (optimal MLMM)



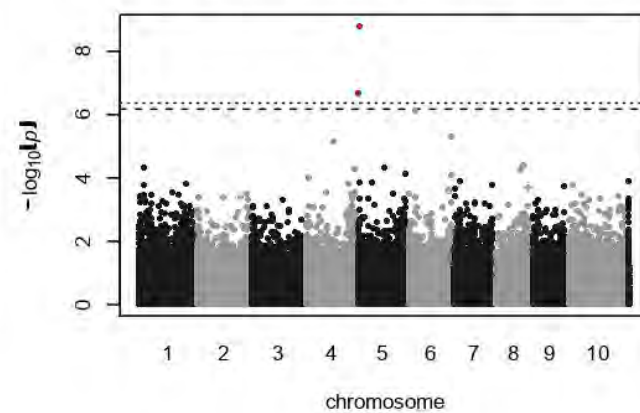
myrcene norm (standard MLM)



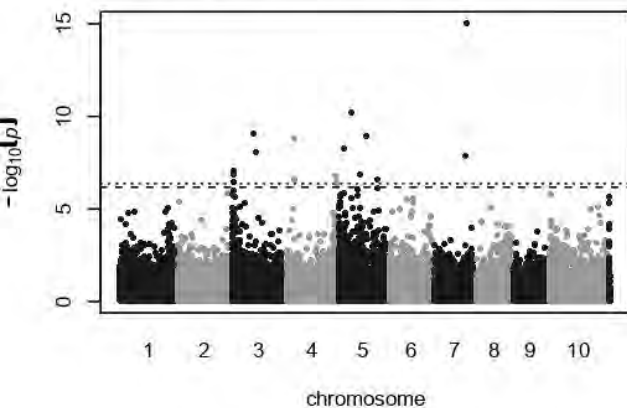
myrcene norm QQ plot (standard MLM)



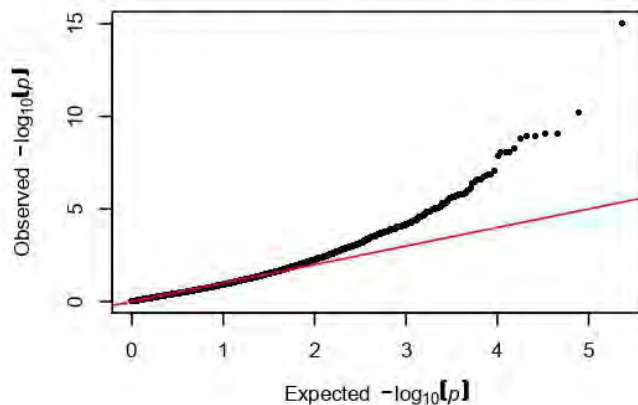
myrcene norm (optimal MLMM)



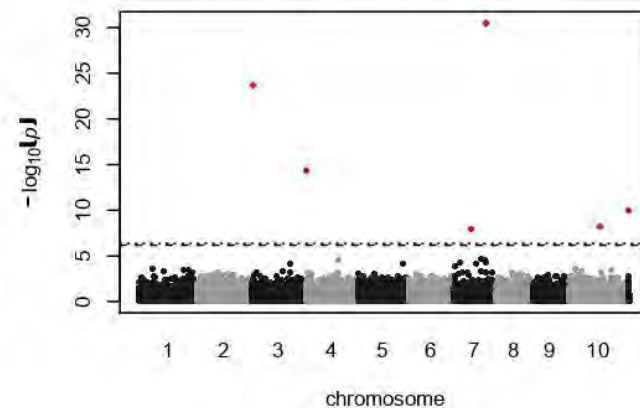
alpha-phellandrene norm (standard MLM)



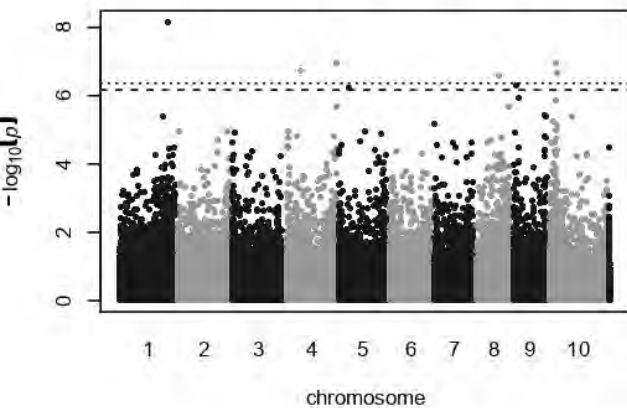
alpha-phellandrene norm QQ plot (standard MLM)



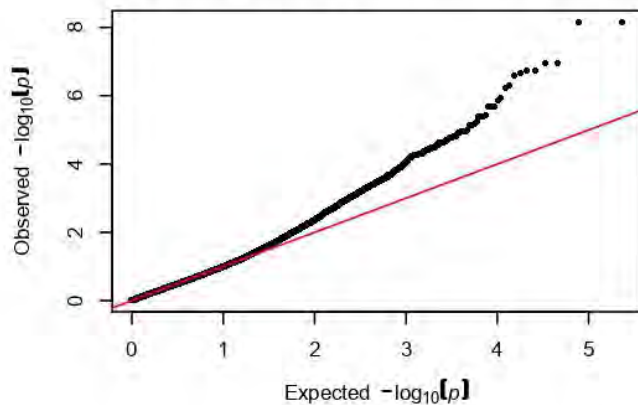
alpha-phellandrene norm (optimal MLMM)



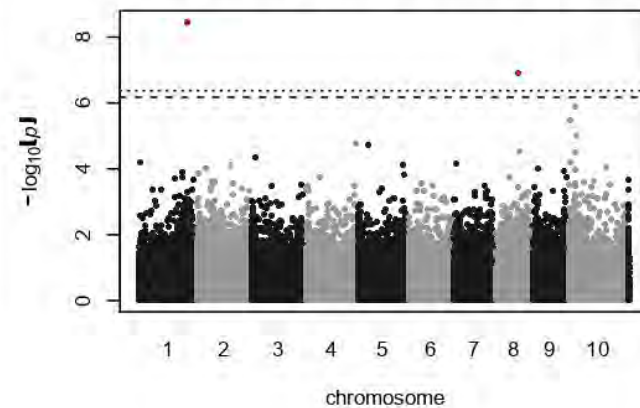
delta-3-carene norm (standard MLM)



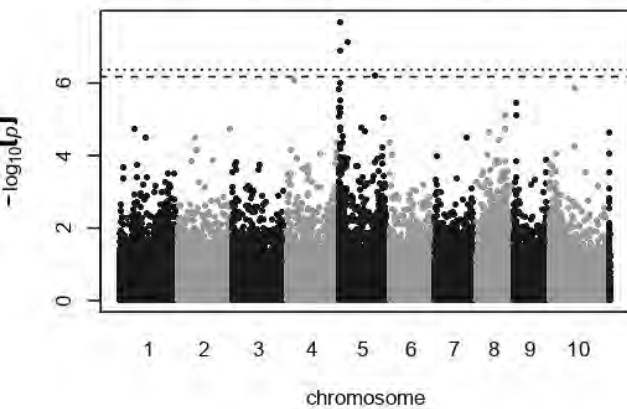
delta-3-carene norm QQ plot (standard MLM)



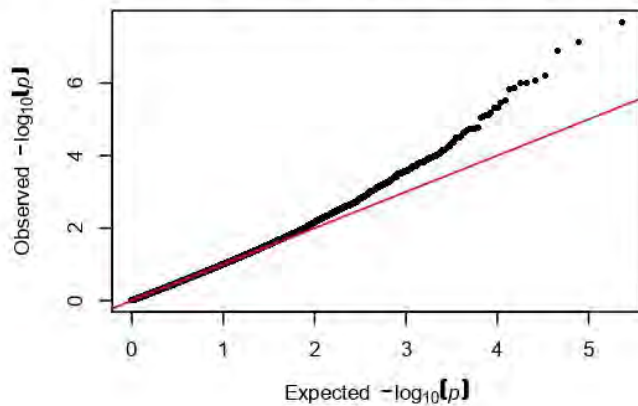
delta-3-carene norm (optimal MLMM)



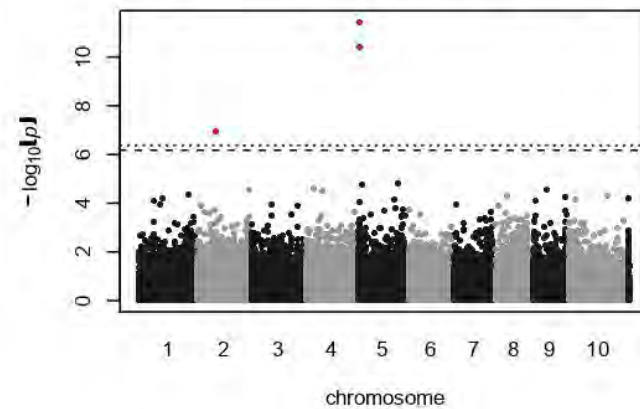
ocimene norm (standard MLM)

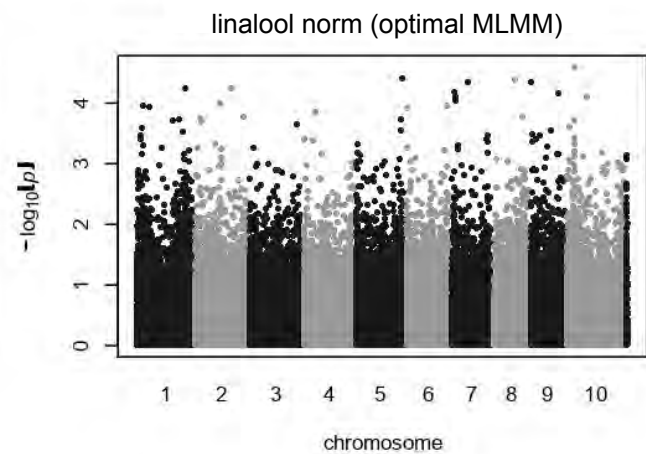
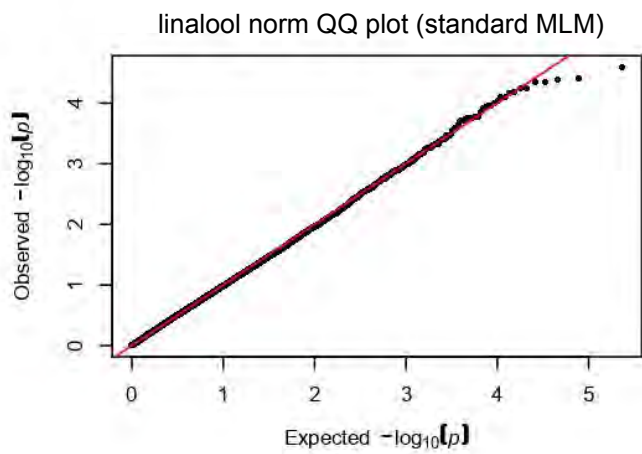
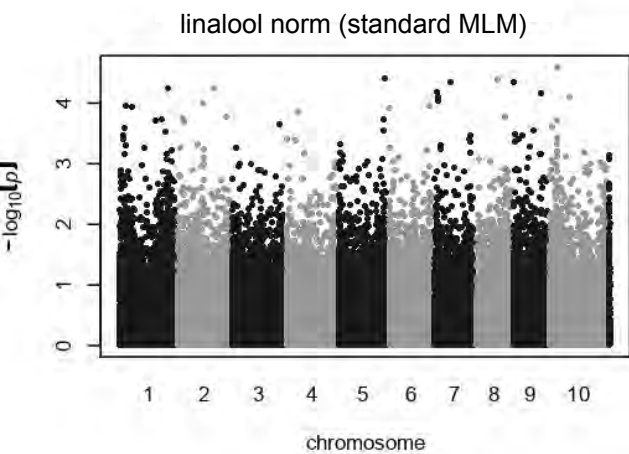
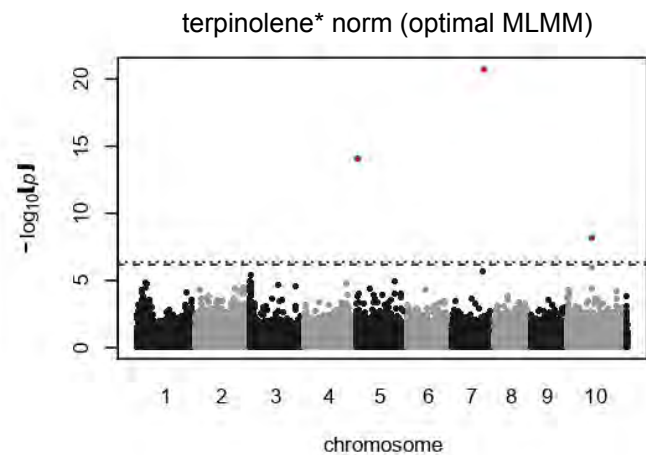
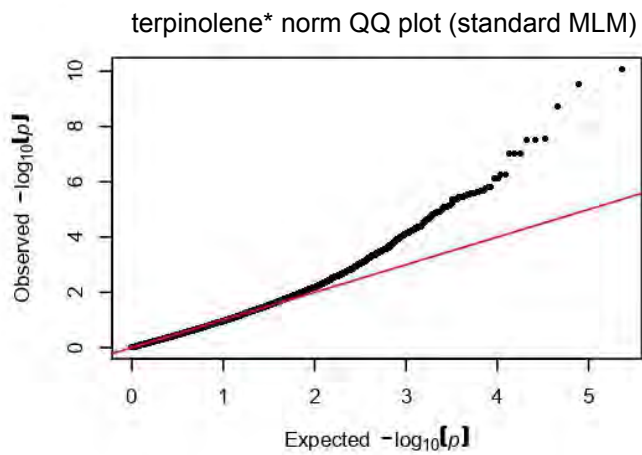
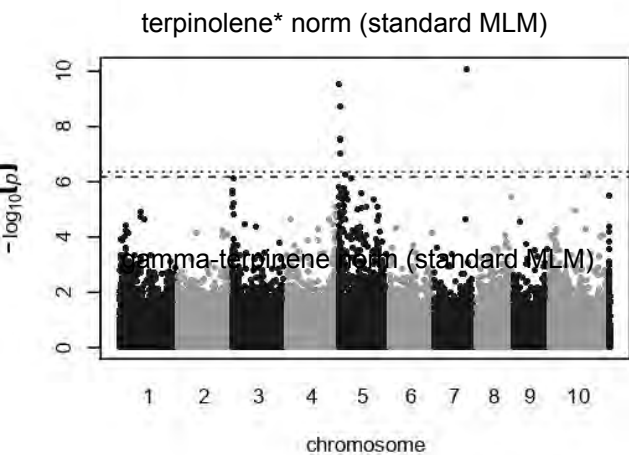
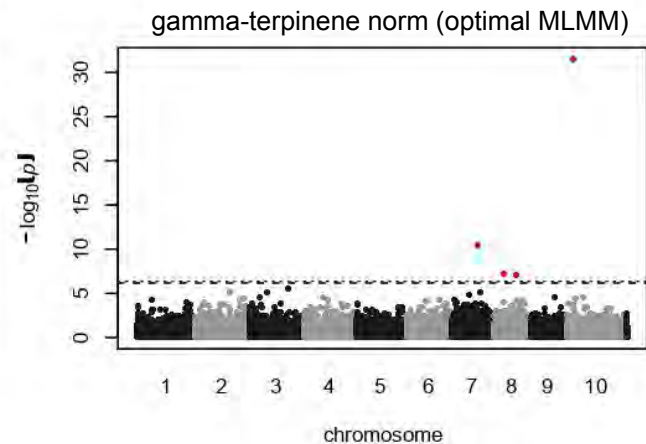
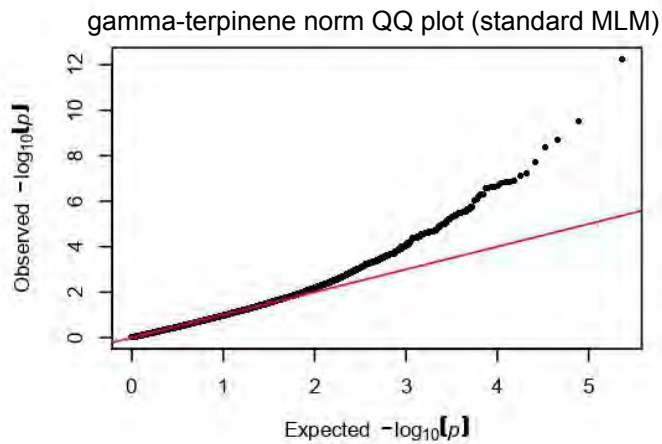
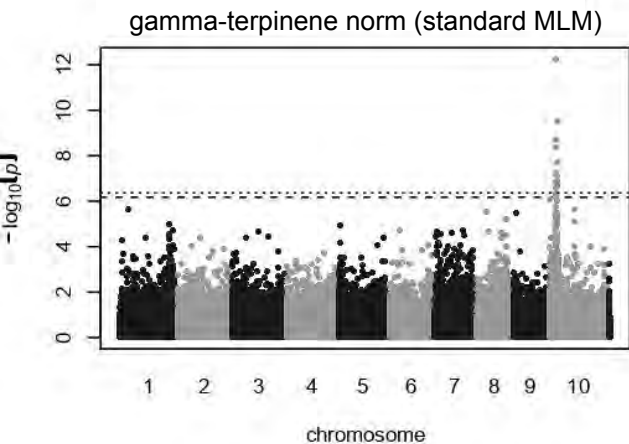


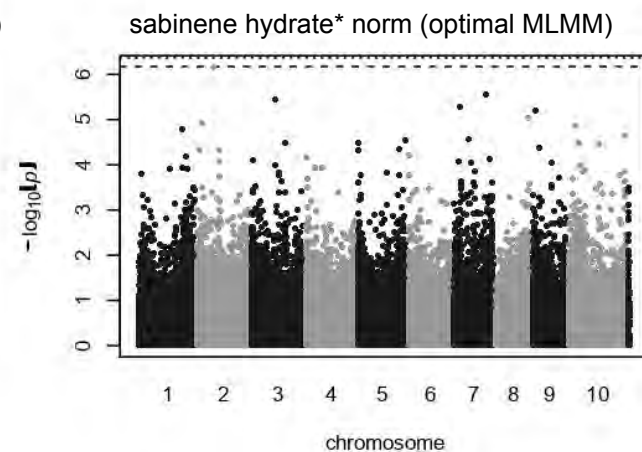
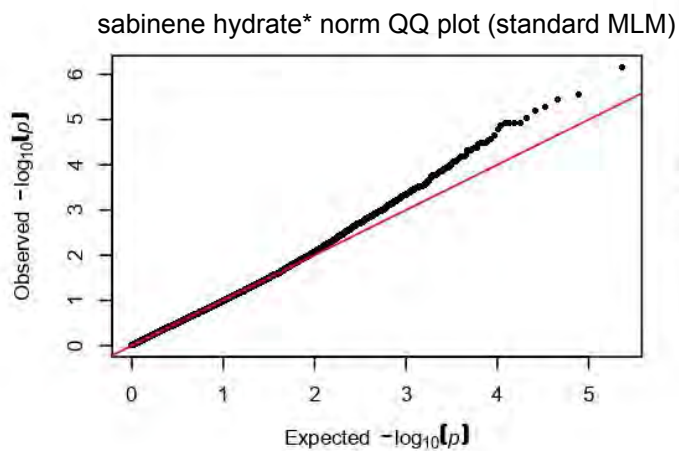
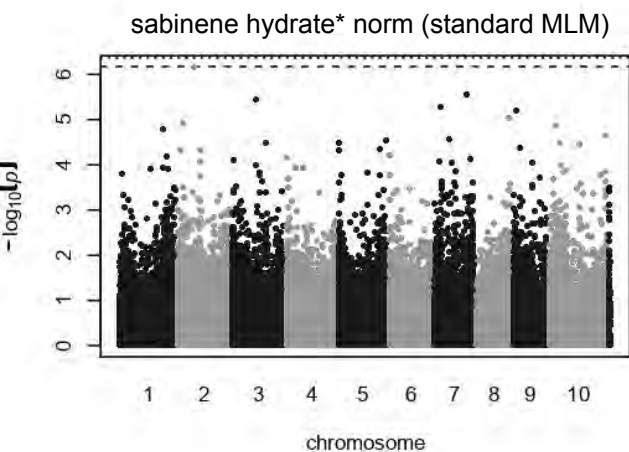
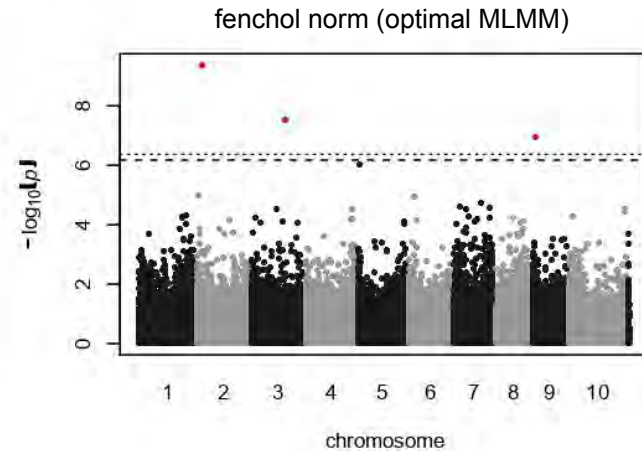
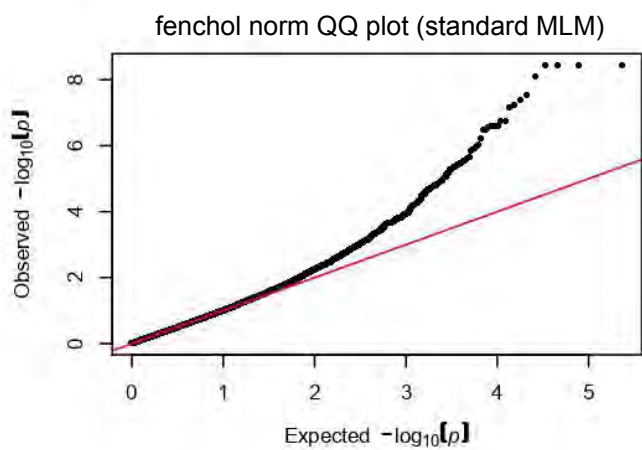
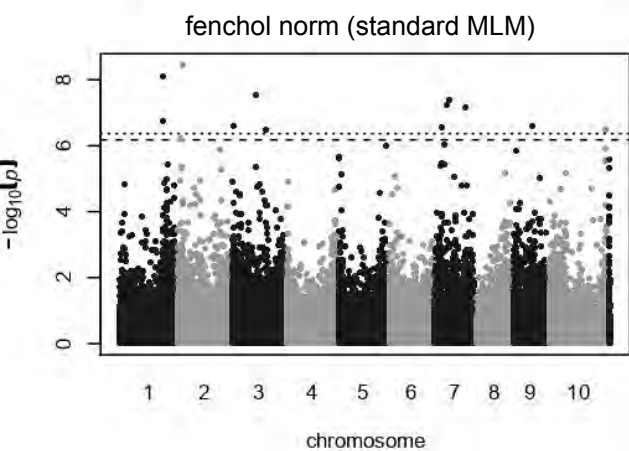
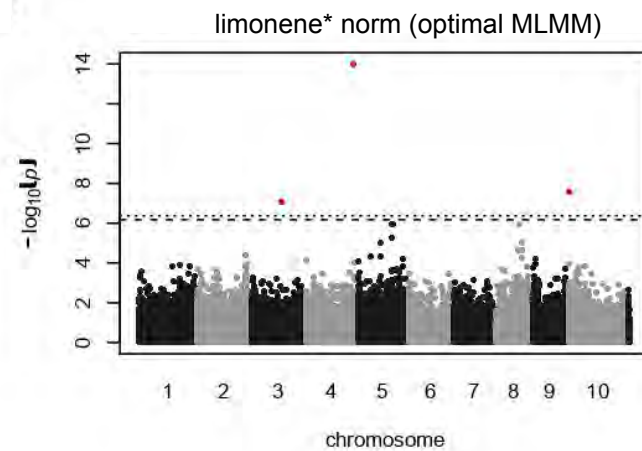
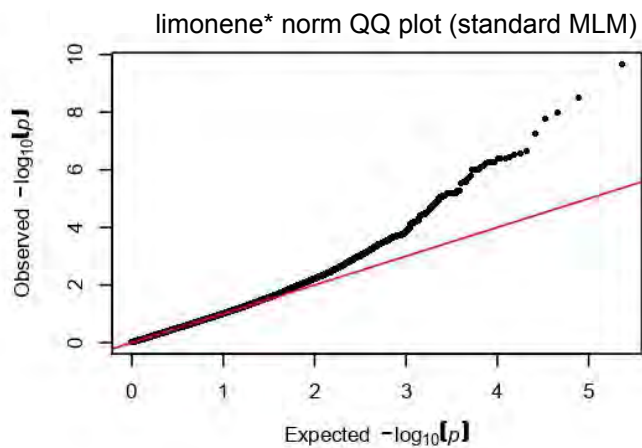
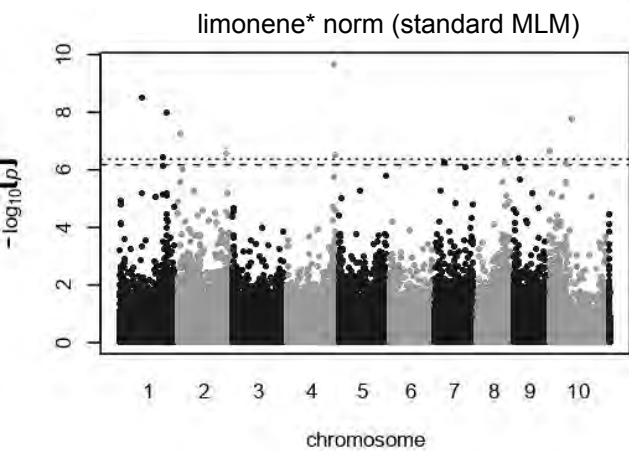
ocimene norm QQ plot (standard MLM)



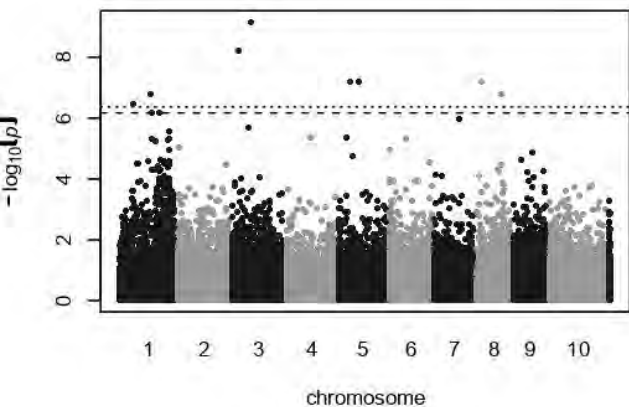
ocimene norm (optimal MLMM)



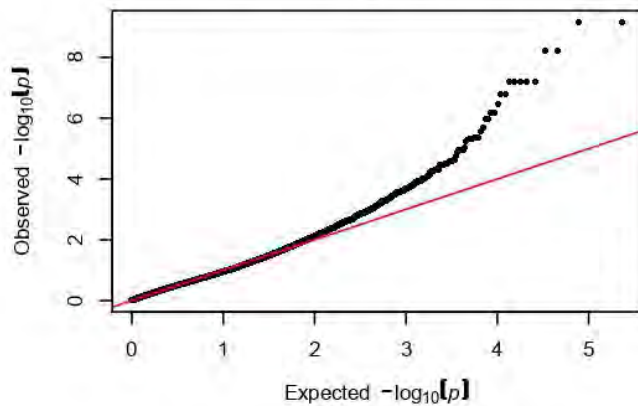




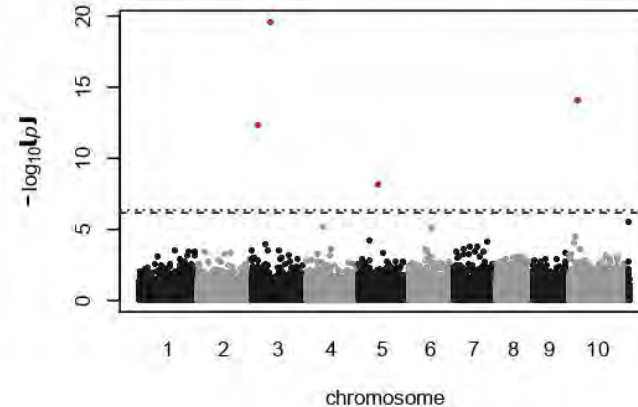
camphor norm (standard MLM)



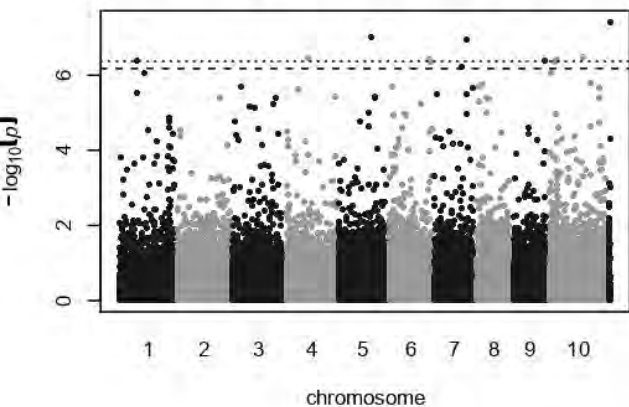
camphor norm QQ plot (standard MLM)



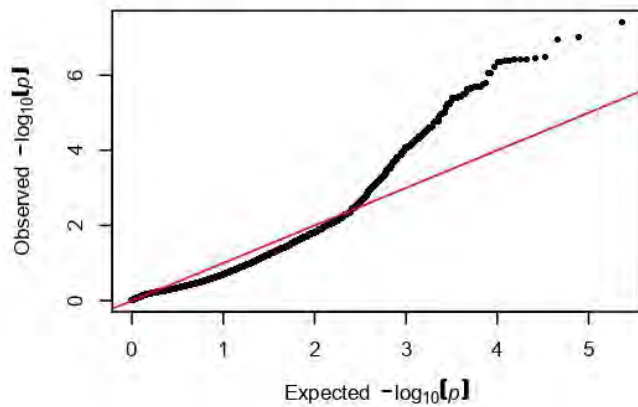
camphor norm (optimal MLMM)



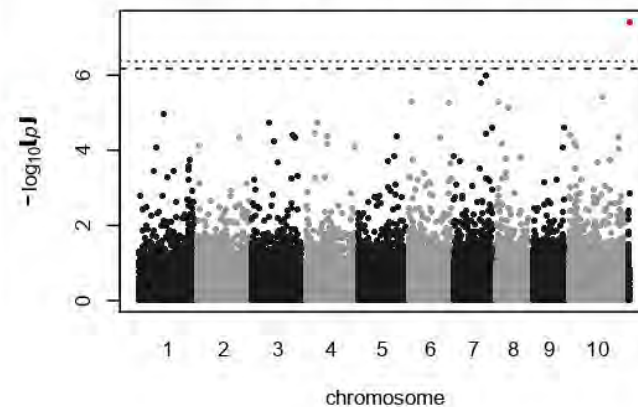
borneol norm (standard MLM)



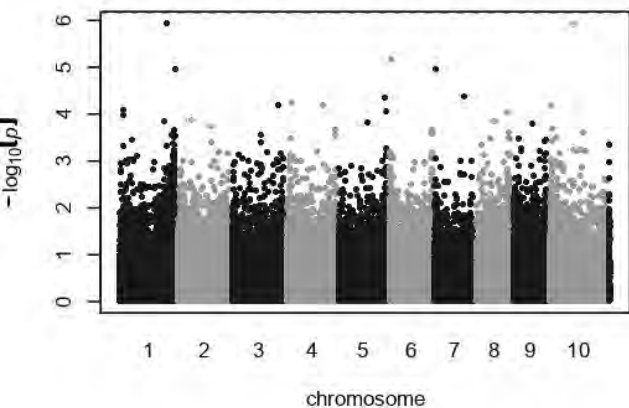
borneol norm QQ plot (standard MLM)



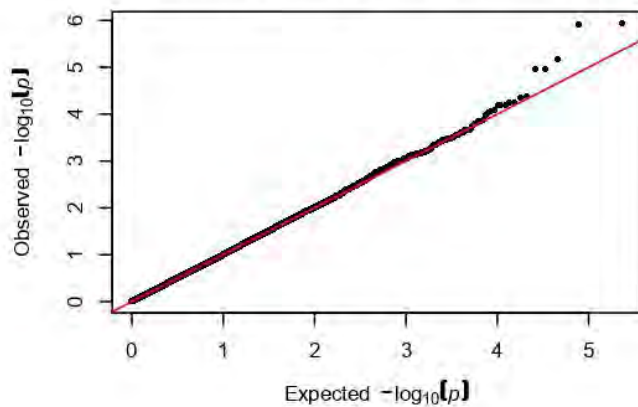
borneol norm (optimal MLMM)



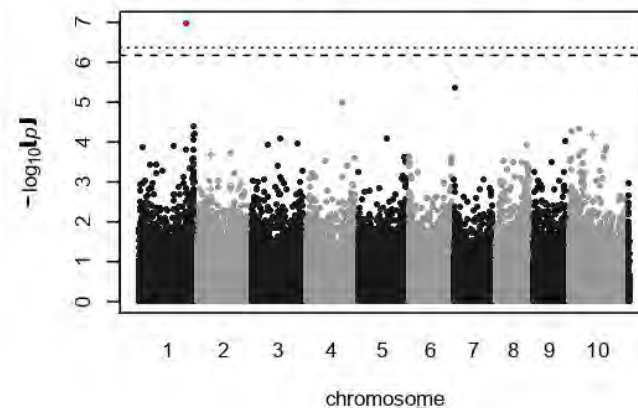
terpineol norm (standard MLM)



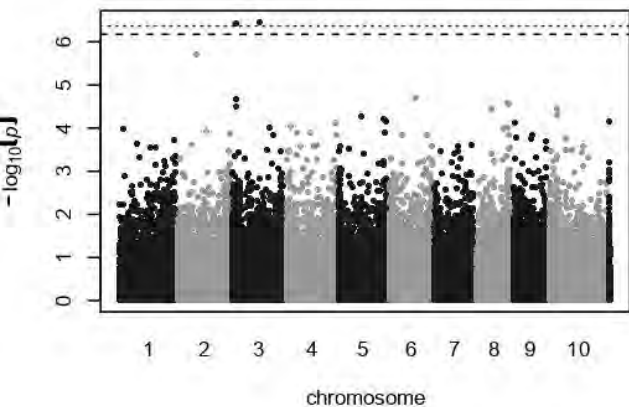
terpineol norm QQ plot (standard MLM)



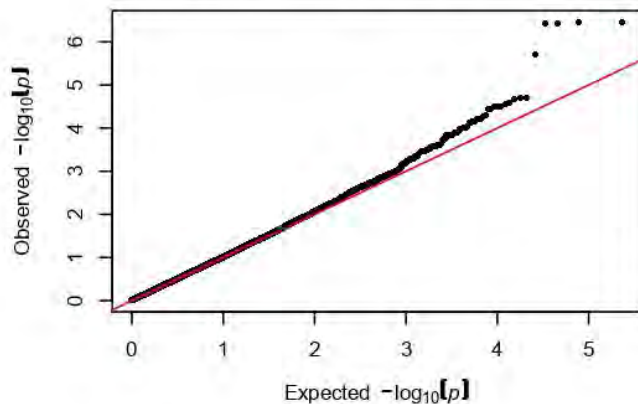
terpineol norm (optimal MLMM)



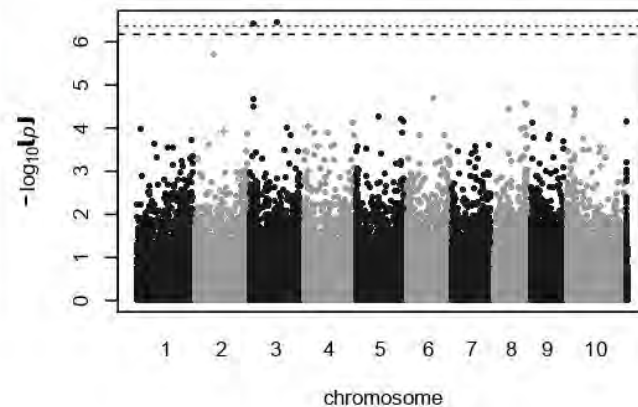
unidentified compound 1 norm (standard MLM)



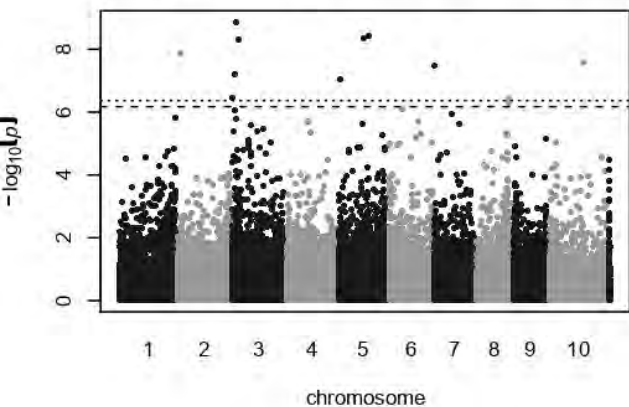
unidentified compound 1 norm QQ plot (standard MLM)



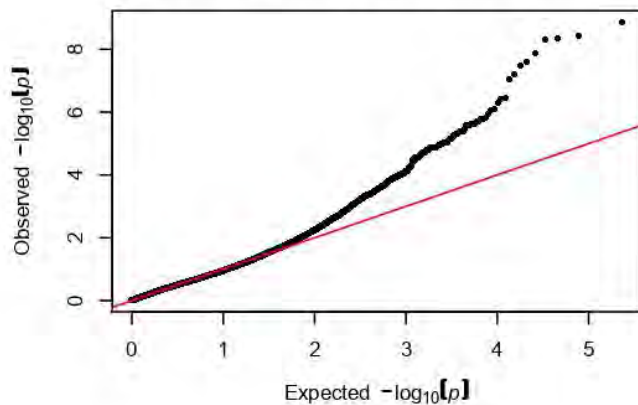
unidentified compound 1 norm (optimal MLMM)



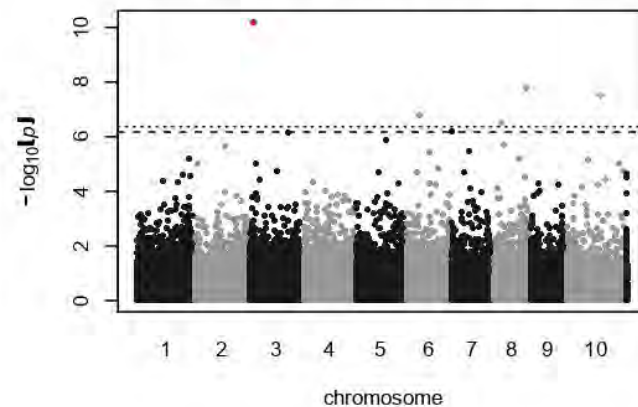
delta-guaiene* norm (standard MLM)



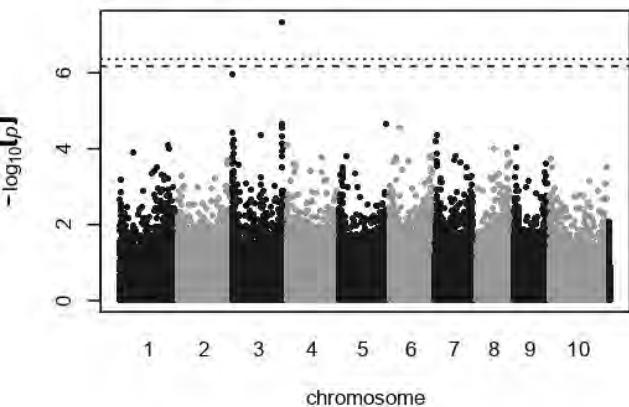
delta-guaiene* norm QQ plot (standard MLM)



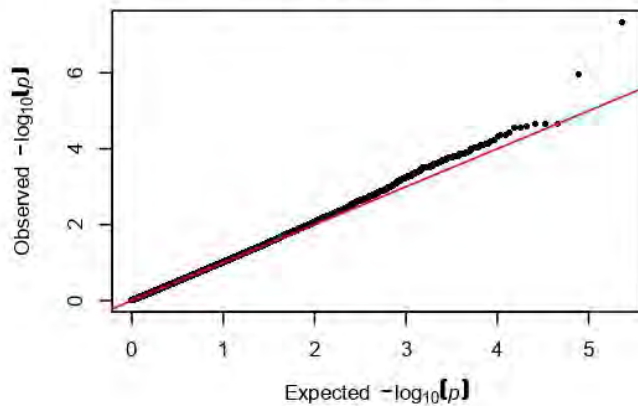
delta-guaiene* norm (optimal MLMM)



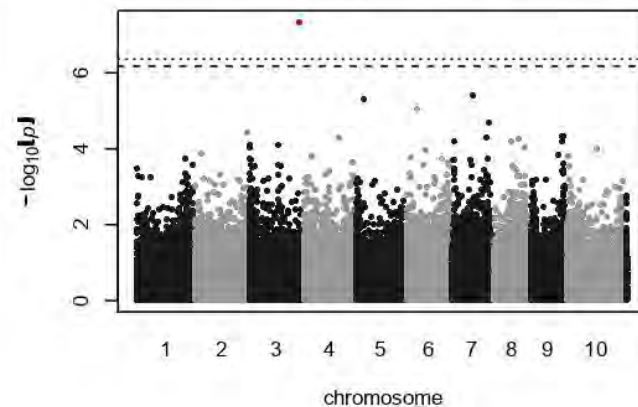
caryophyllene norm (standard MLM)



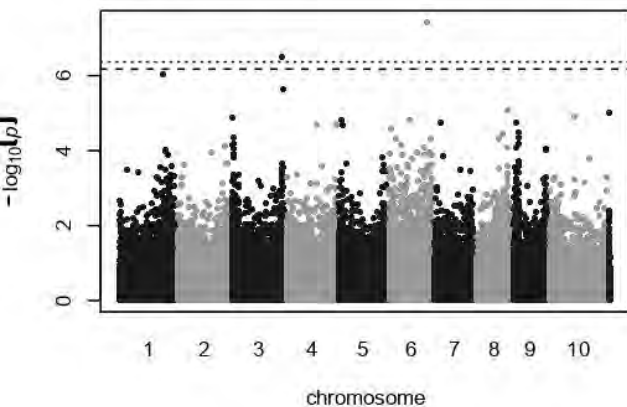
caryophyllene norm QQ plot (standard MLM)



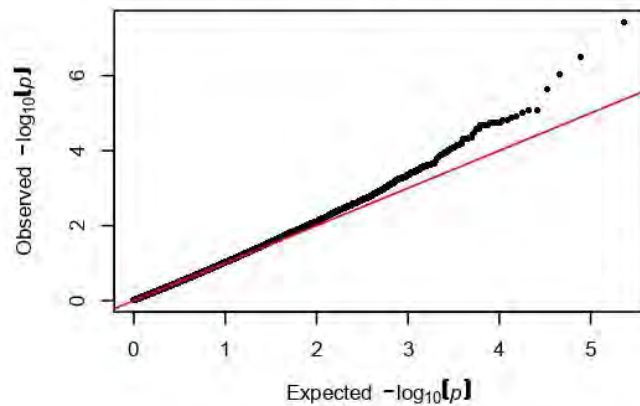
caryophyllene norm (optimal MLMM)



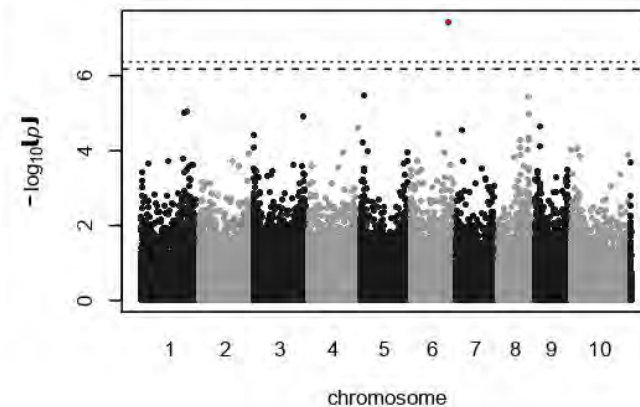
alpha-humulene norm (standard MLM)



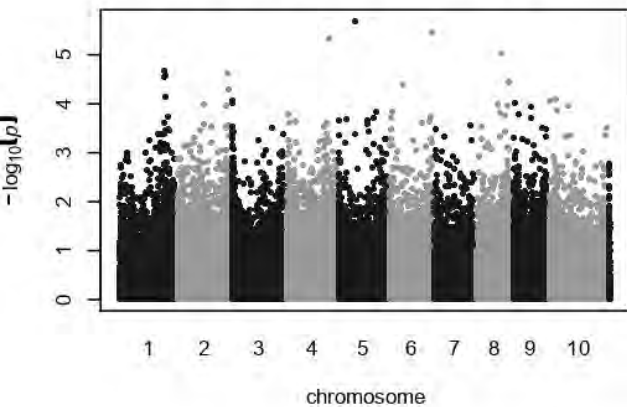
alpha-humulene norm QQ plot (standard MLM)



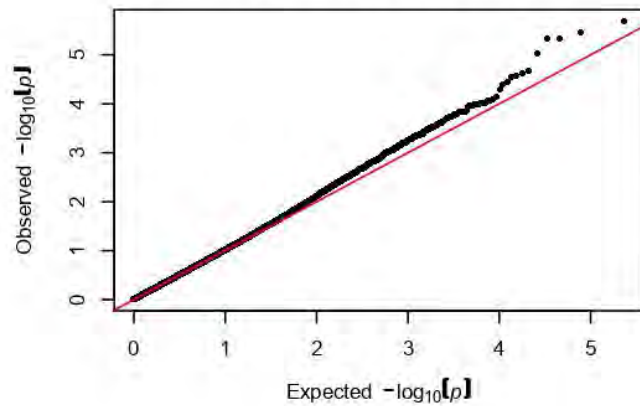
alpha-humulene norm (optimal MLMM)



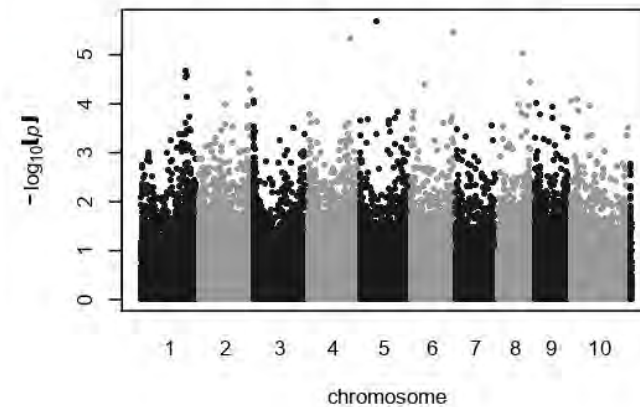
gamma-cadinene* norm (standard MLM)



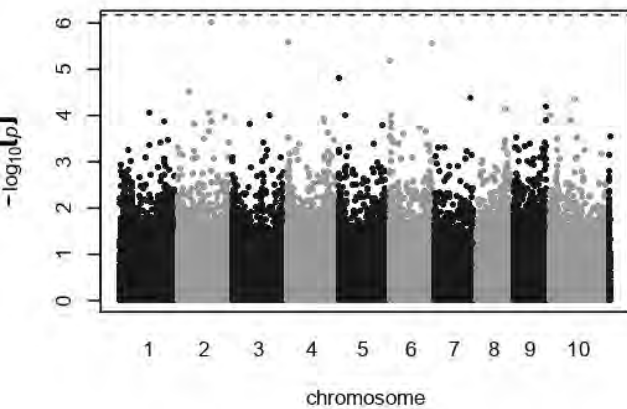
gamma-cadinene* norm QQ plot (standard MLM)



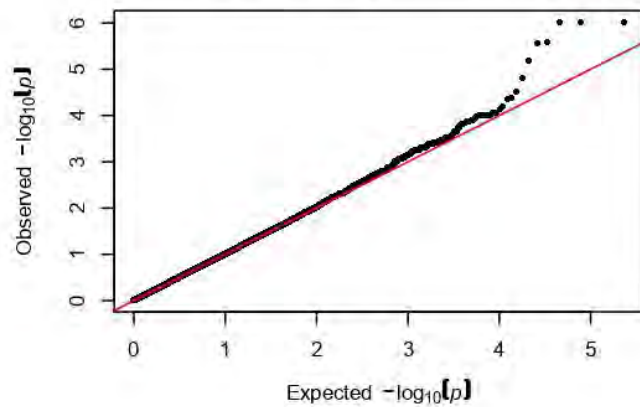
gamma-cadinene* norm (optimal MLMM)



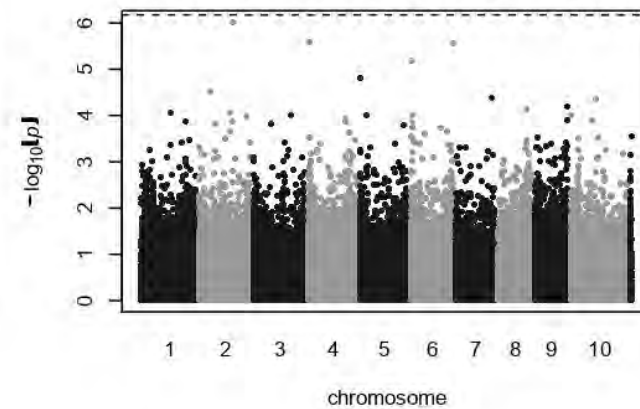
eudesma* norm (standard MLM)



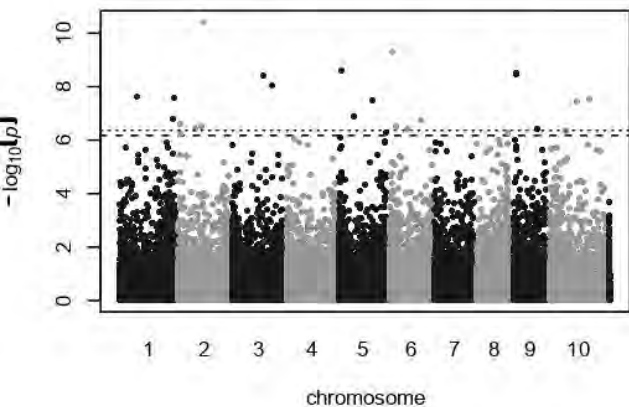
eudesma* norm QQ plot (standard MLM)



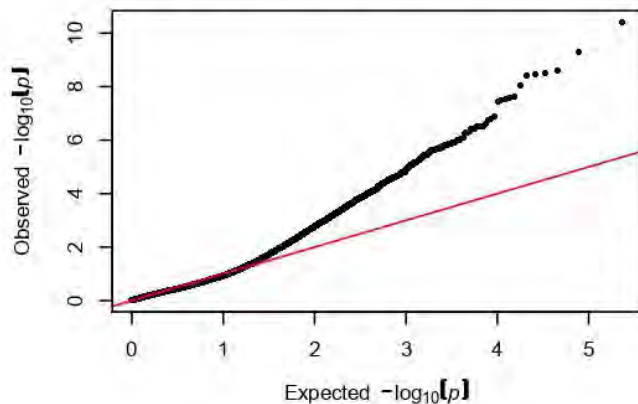
eudesma* norm (optimal MLMM)



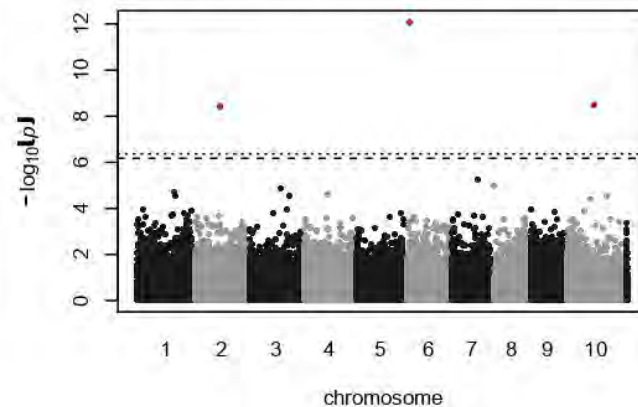
unidentified compound 2 norm (standard MLM)



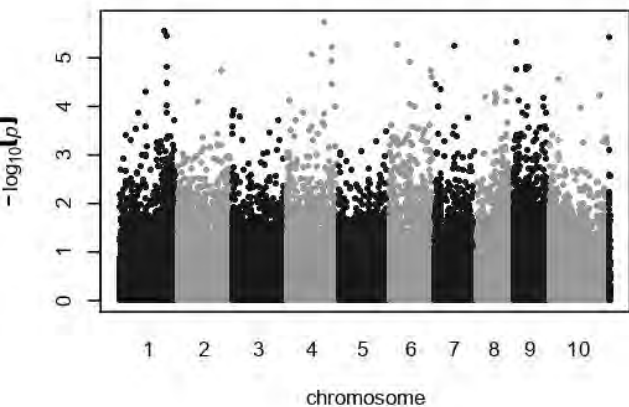
unidentified compound 2 norm QQ plot (standard MLM)



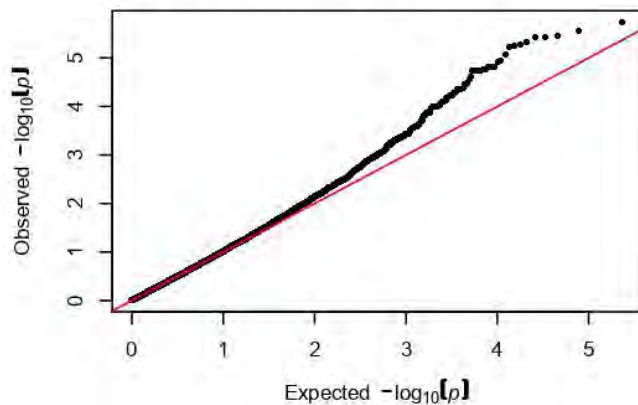
unidentified compound 2 norm (optimal MLM)



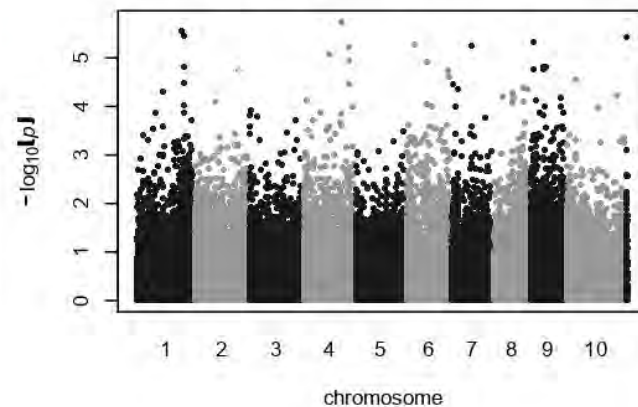
alpha-guainene* norm (standard MLM)



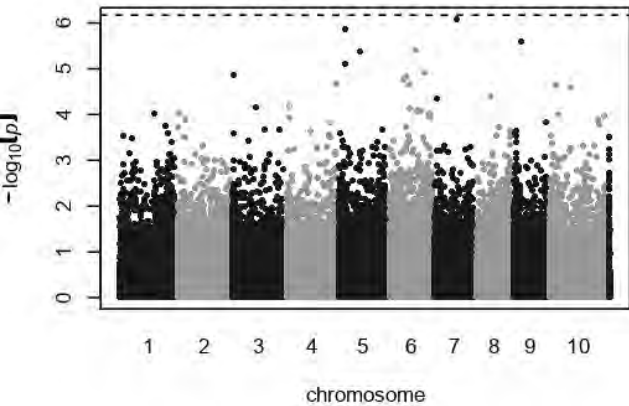
alpha-guainene* norm QQ plot (standard MLM)



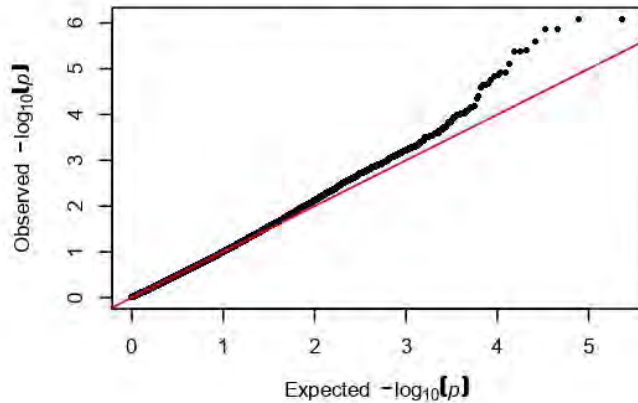
alpha-guainene* norm (optimal MLM)



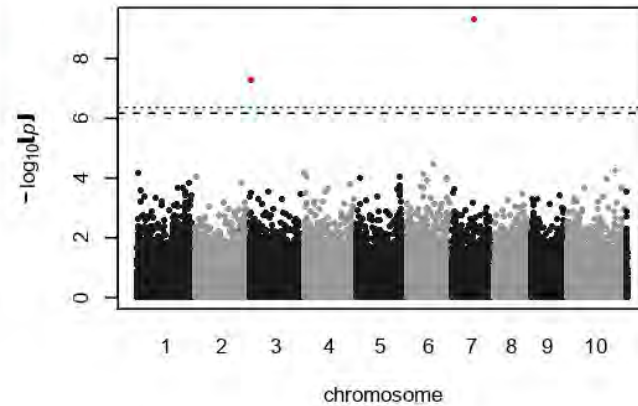
gamma-selinene* norm (standard MLM)



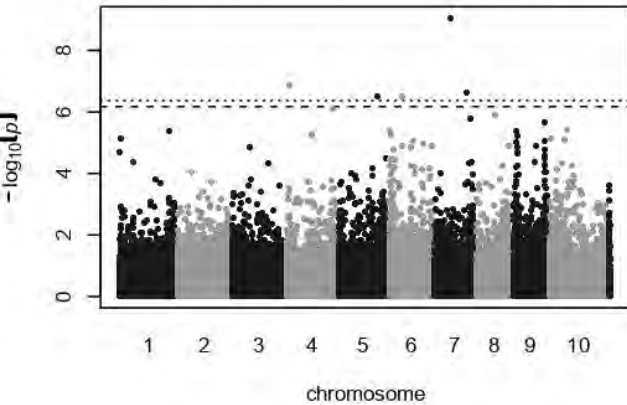
gamma-selinene* norm QQ plot (standard MLM)



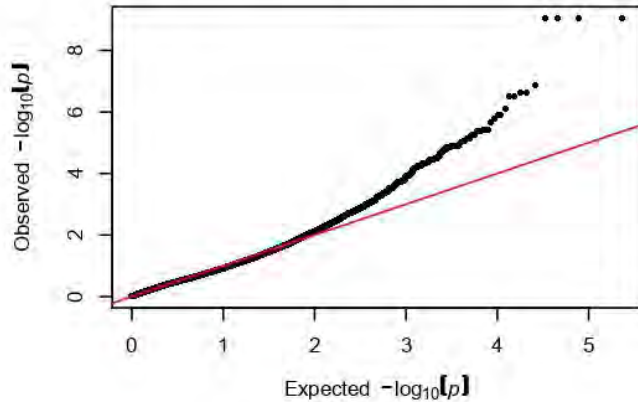
gamma-selinene* norm (optimal MLM)



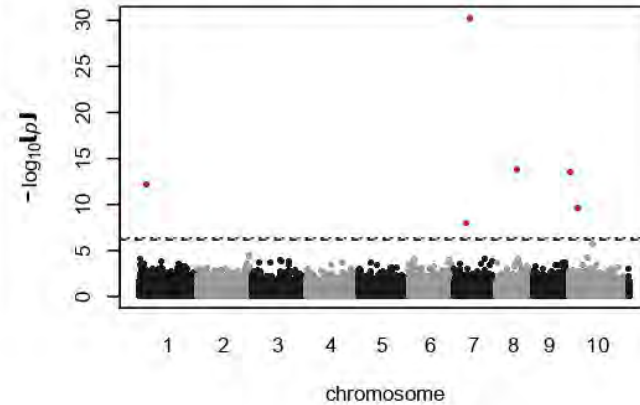
gurjunen* norm (standard MLM)



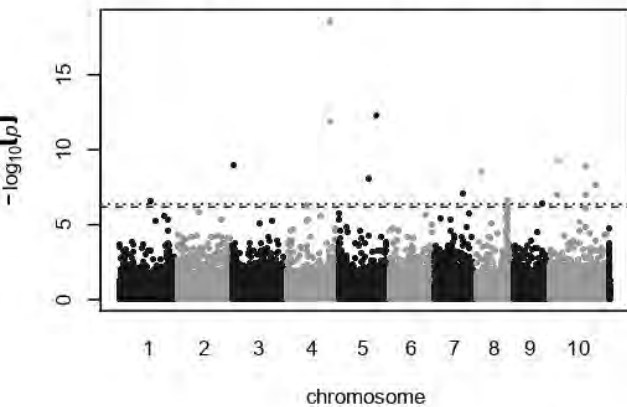
gurjunen* norm QQ plot (standard MLM)



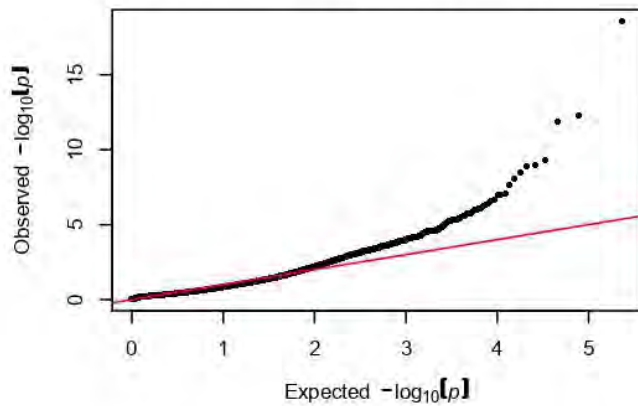
gurjunen* norm (optimal MLM)



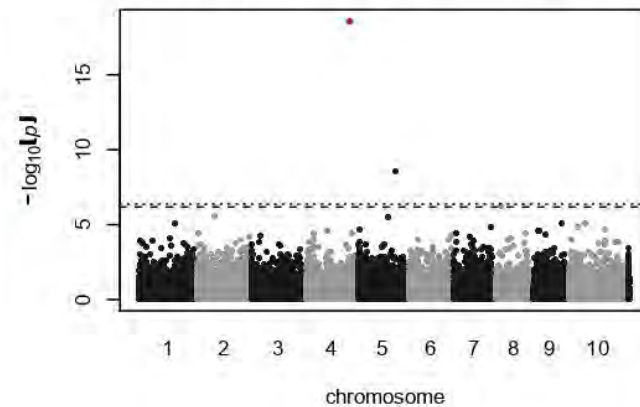
caryophyllene oxide norm (standard MLM)



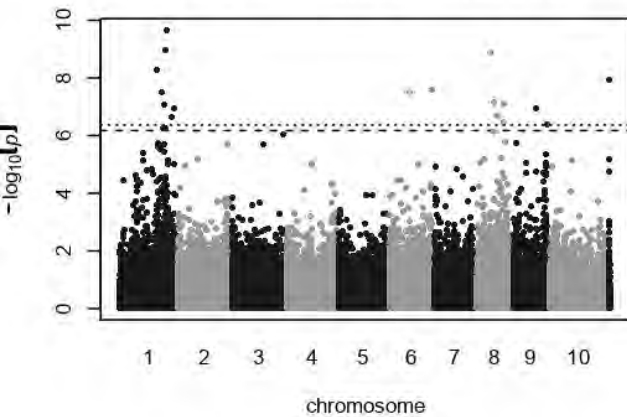
caryophyllene oxide norm QQ plot (standard MLM)



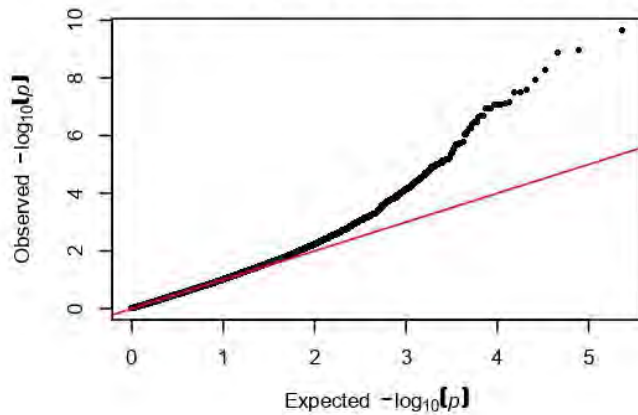
caryophyllene oxide norm (optimal MLM)



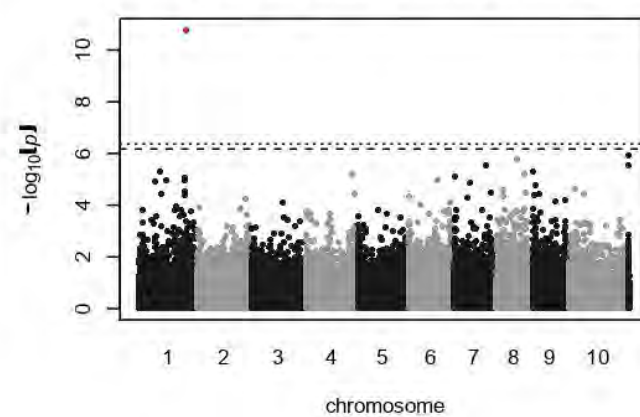
bergamotene* norm (standard MLM)



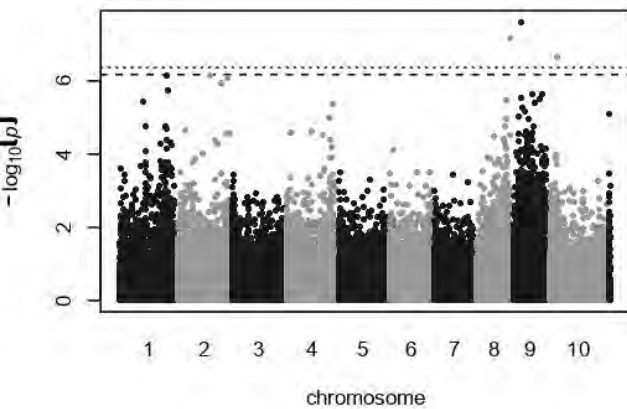
bergamotene* norm QQ plot (standard MLM)



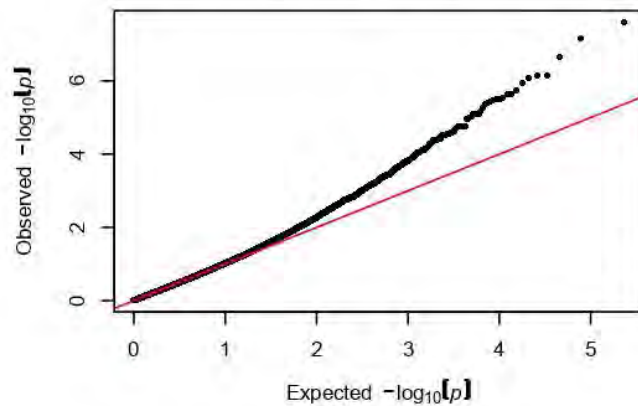
bergamotene* norm (optimal MLM)



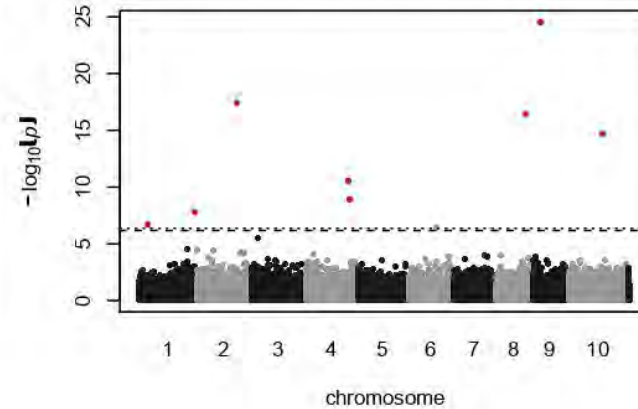
farnesene norm (standard MLM)



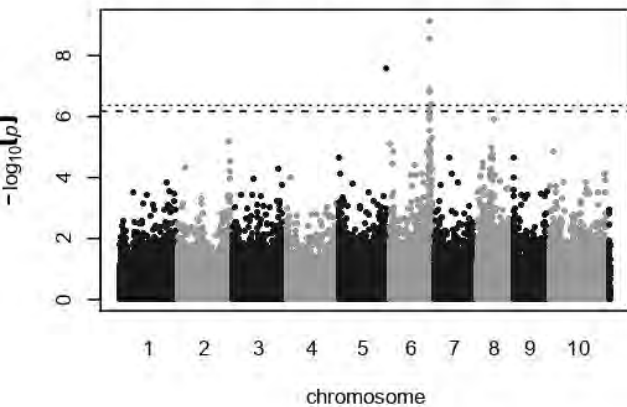
farnesene norm QQ plot (standard MLM)



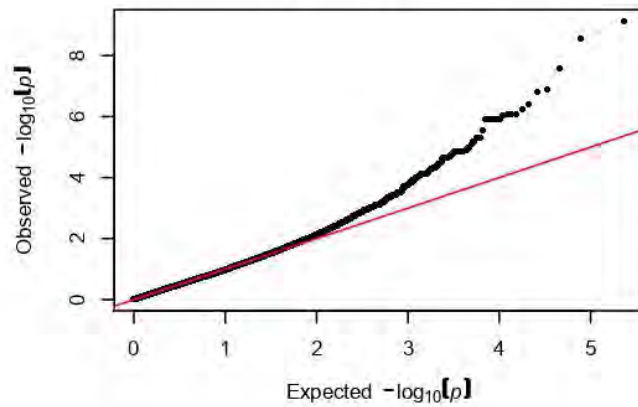
farnesene norm (optimal MLMM)



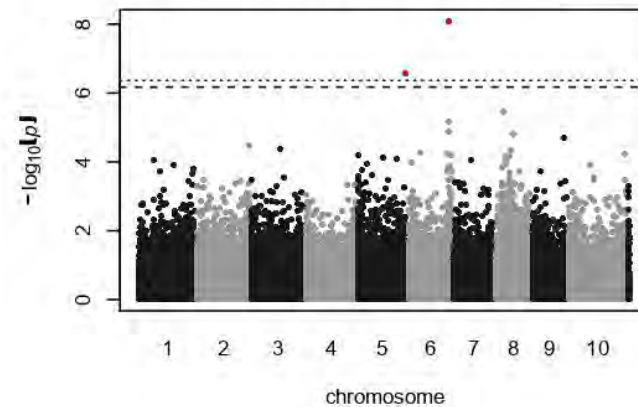
aromadendrene norm (standard MLM)



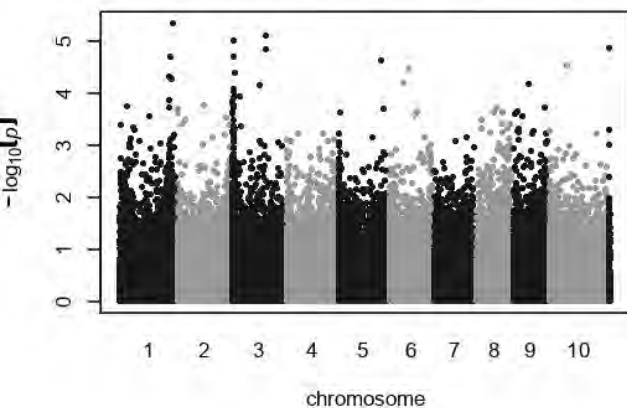
aromadendrene norm QQ plot (standard MLM)



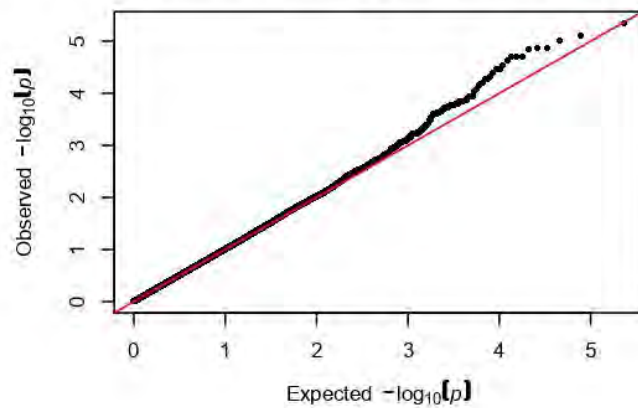
aromadendrene norm (optimal MLMM)



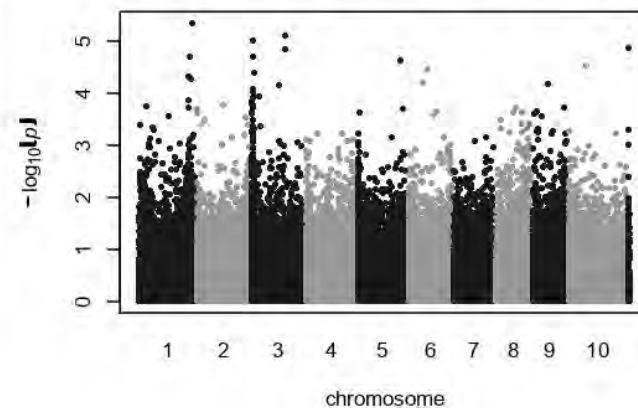
gamma-elemene* norm (standard MLM)



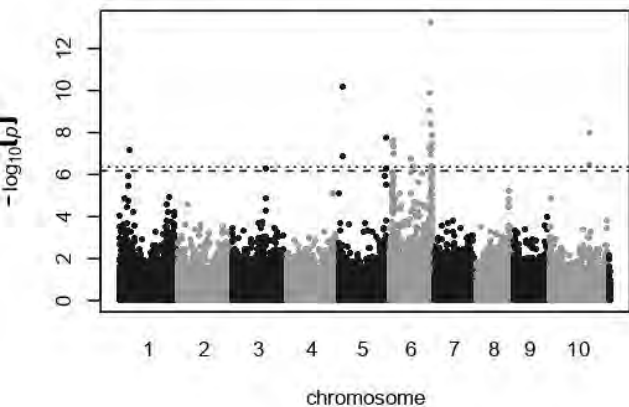
gamma-elemene* norm QQ plot (standard MLM)



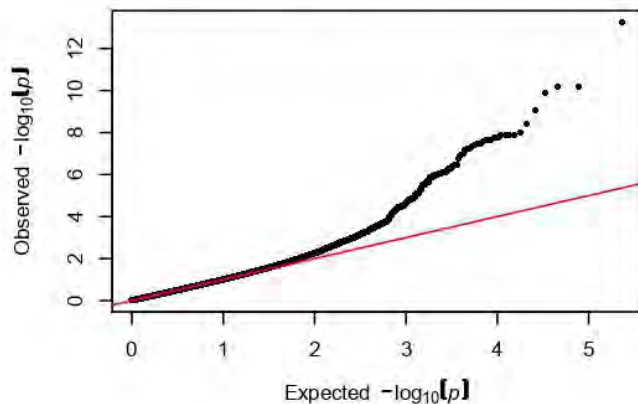
gamma-elemene* norm (optimal MLMM)



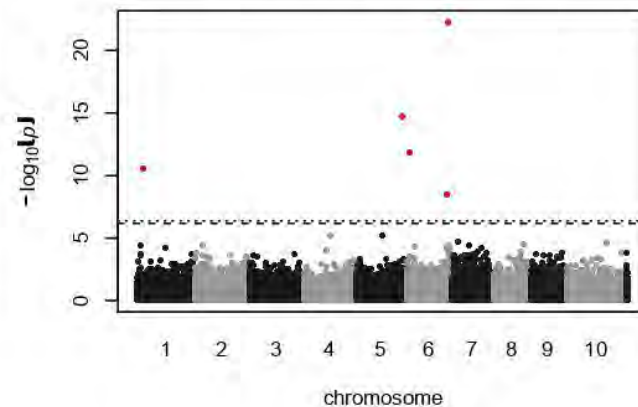
guaiol* norm (standard MLM)



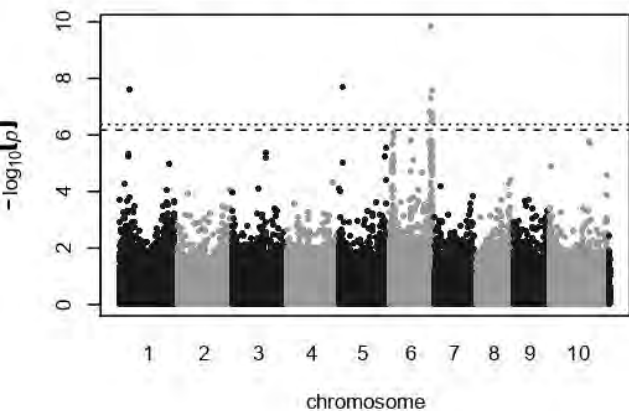
guaiol* norm QQ plot (standard MLM)



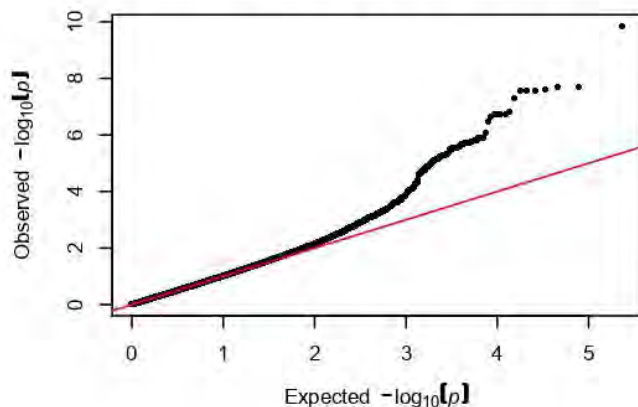
guaiol* norm (optimal MLMM)



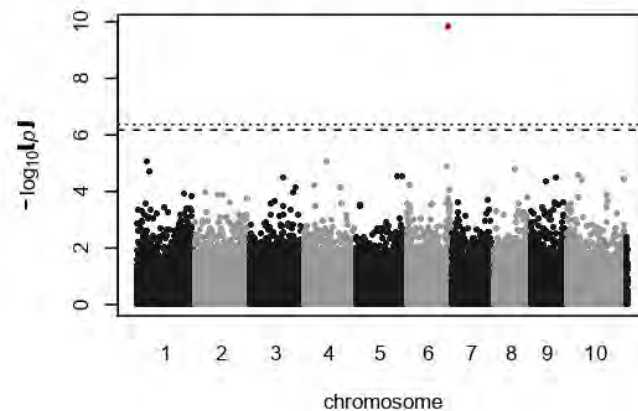
gamma-eudesmol* norm (standard MLM)



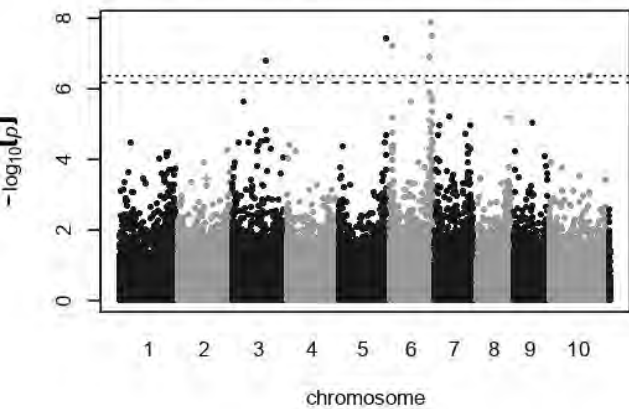
gamma-eudesmol* norm QQ plot (standard MLM)



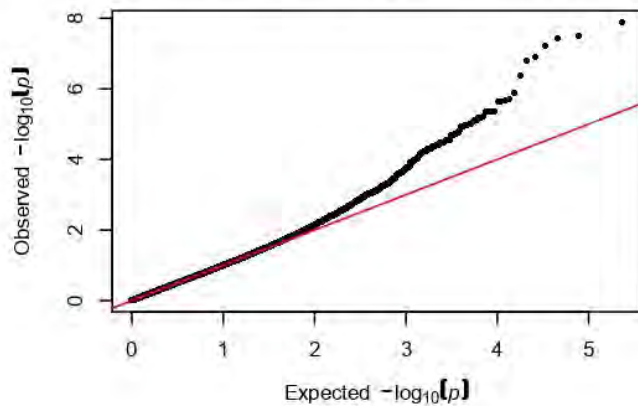
gamma-eudesmol* norm (optimal MLMM)



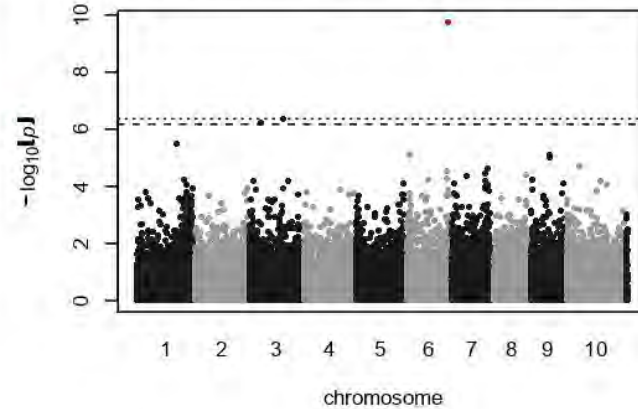
beta-eudesmol norm (standard MLM)



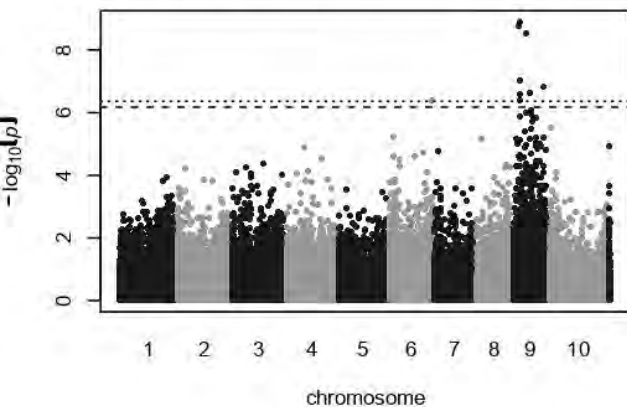
beta-eudesmol norm QQ plot (standard MLM)



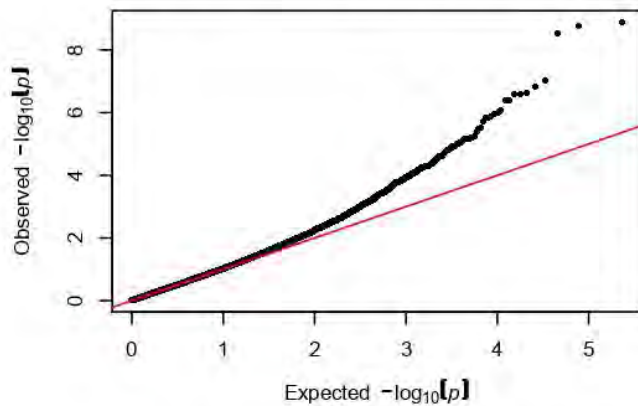
beta-eudesmol norm (optimal MLMM)



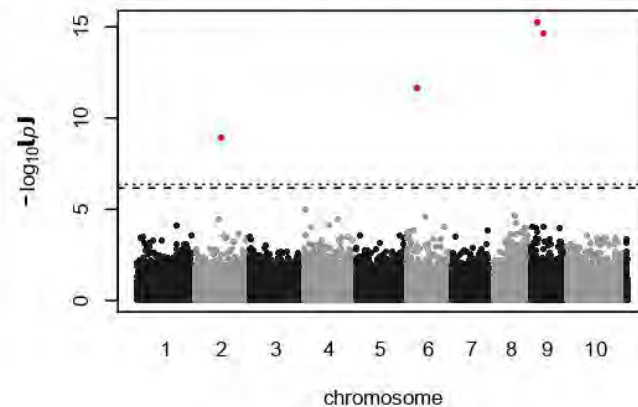
alpha-bisabolol norm (standard MLM)



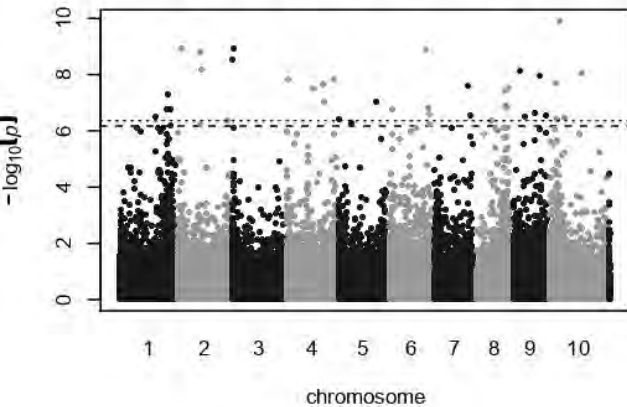
alpha-bisabolol norm QQ plot (standard MLM)



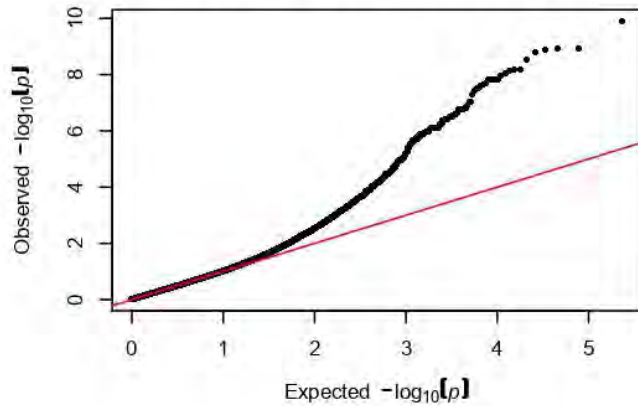
alpha-bisabolol norm (optimal MLMM)



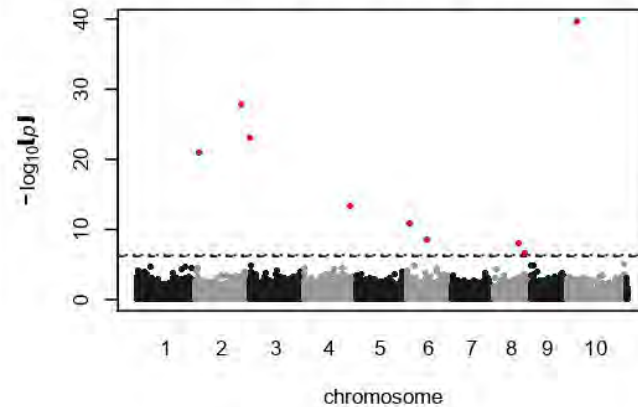
THC norm (standard MLM)



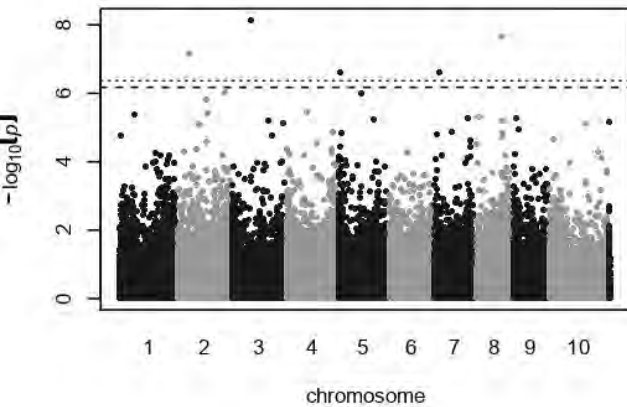
THC norm QQ plot (standard MLM)



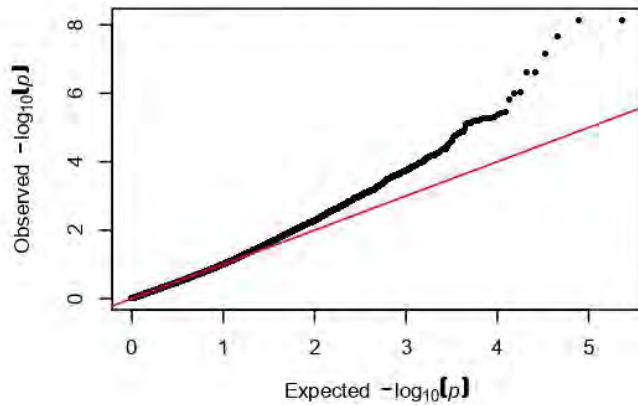
THC norm (optimal MLMM)



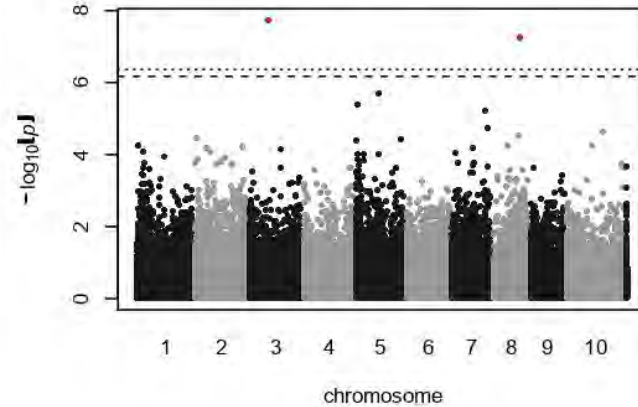
CBG norm (standard MLM)



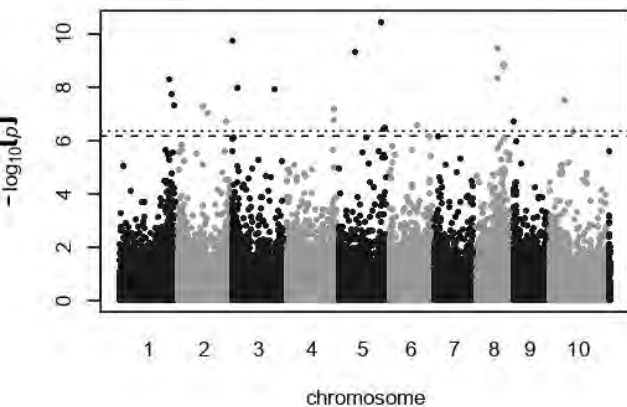
CBG norm QQ plot (standard MLM)



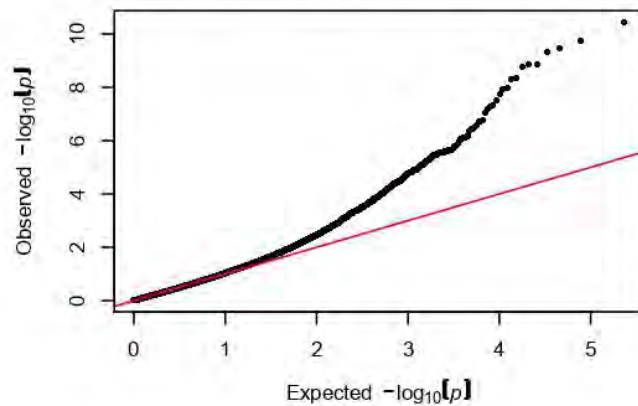
CBG norm (optimal MLMM)



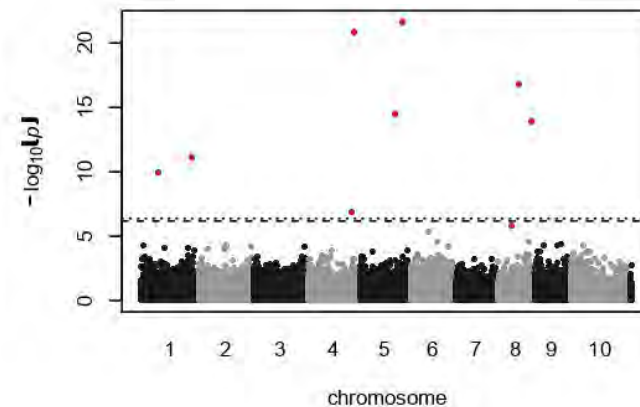
CBC norm (standard MLM)



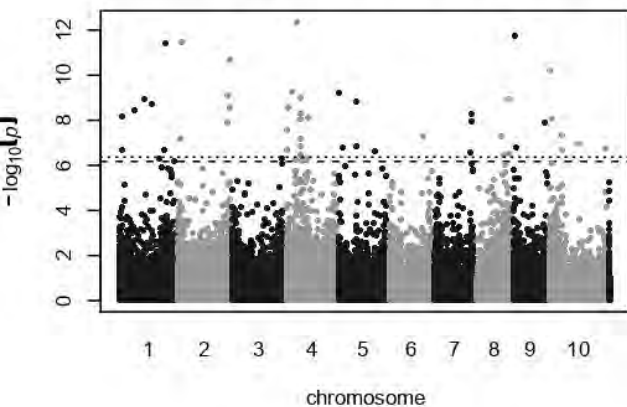
CBC norm QQ plot (standard MLM)



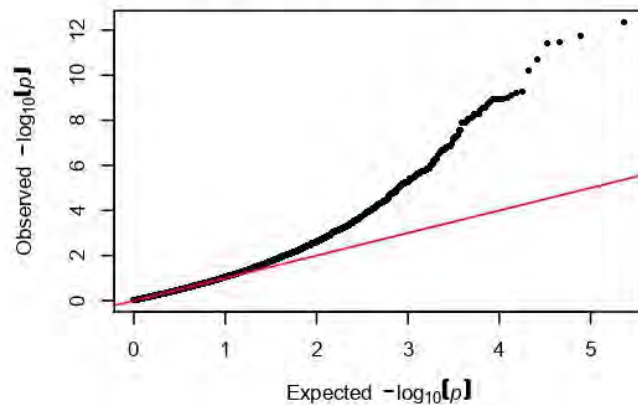
CBC norm (optimal MLMM)



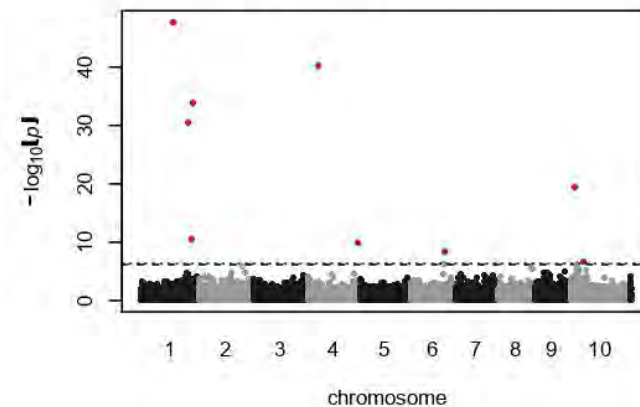
THCV norm (standard MLM)



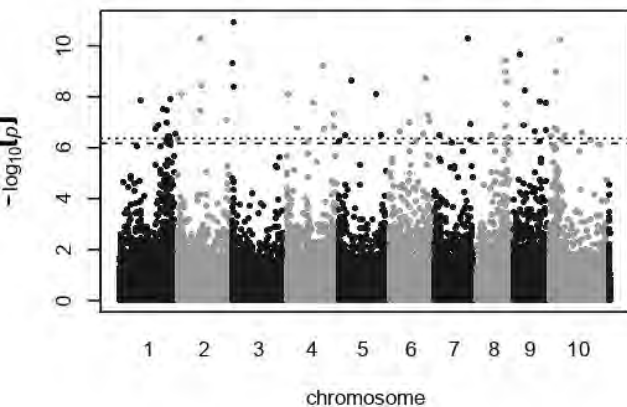
THCV norm QQ plot (standard MLM)



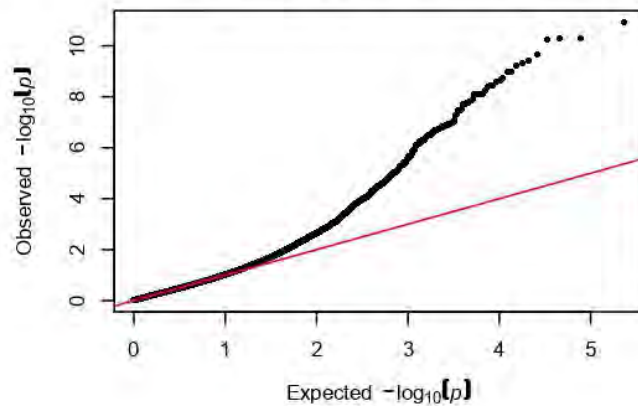
THCV norm (optimal MLMM)



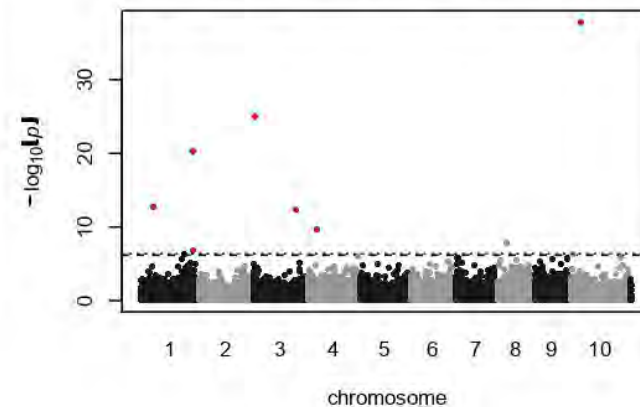
CBD norm (standard MLM)

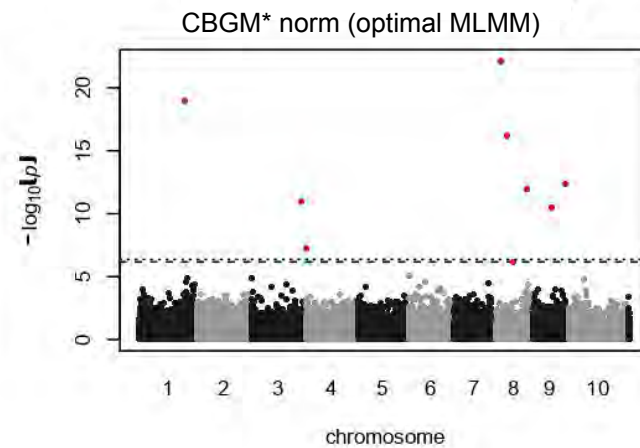
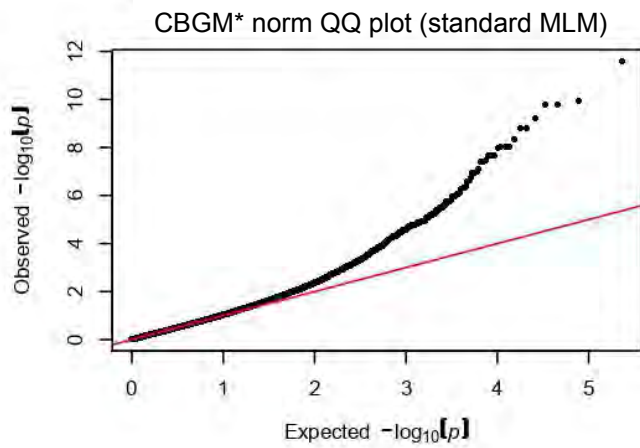
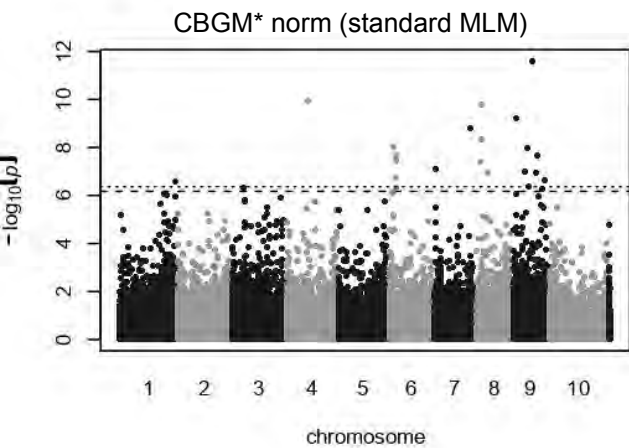


CBD norm QQ plot (standard MLM)

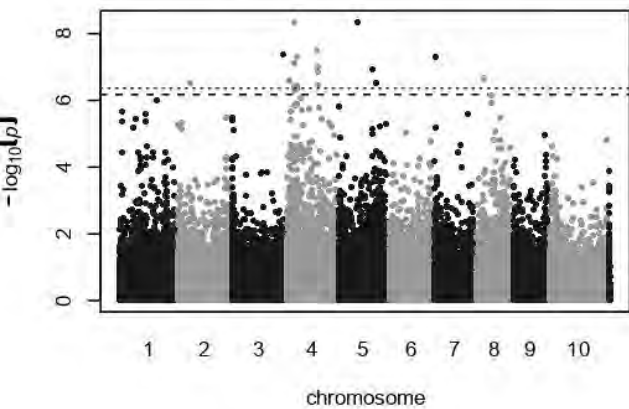


CBD norm (optimal MLMM)

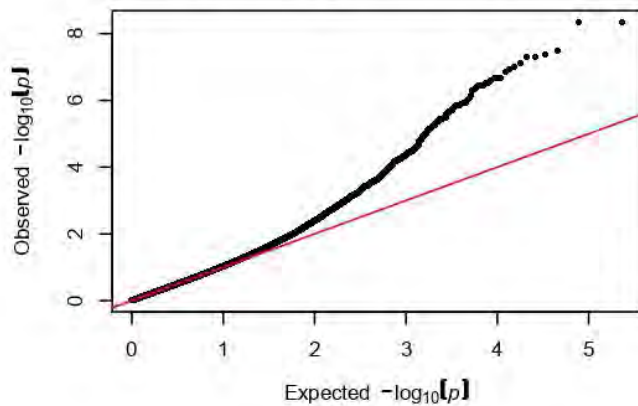




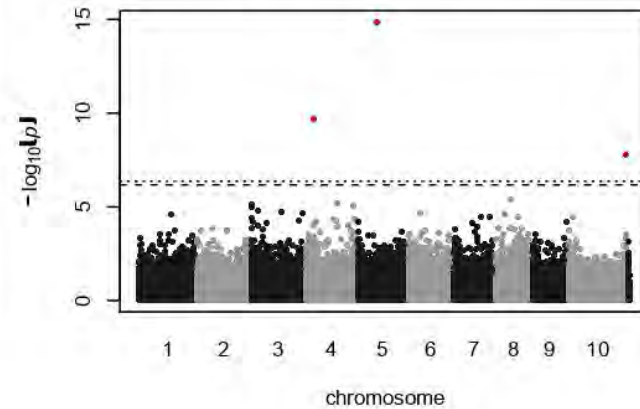
alpha-pinene (standard MLM)



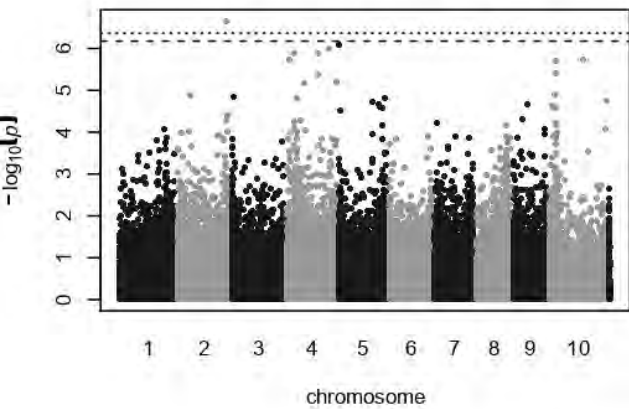
alpha-pinene QQ plot (standard MLM)



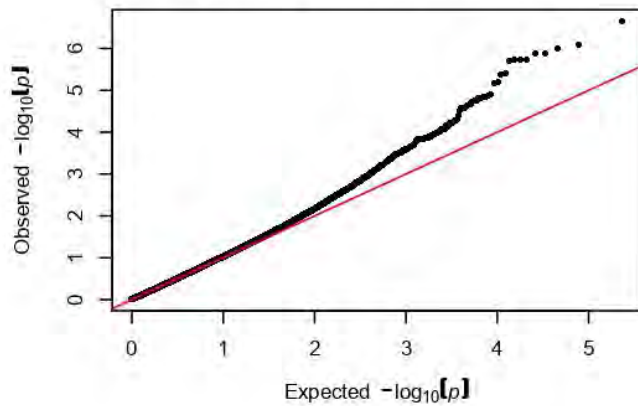
alpha-pinene (optimal MLMM)



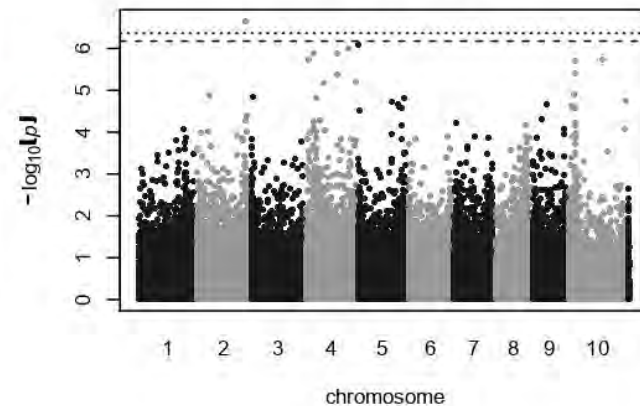
beta-pinene (standard MLM)



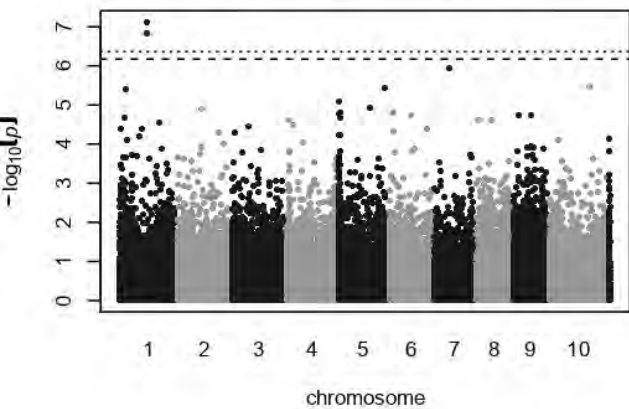
beta-pinene QQ plot (standard MLM)



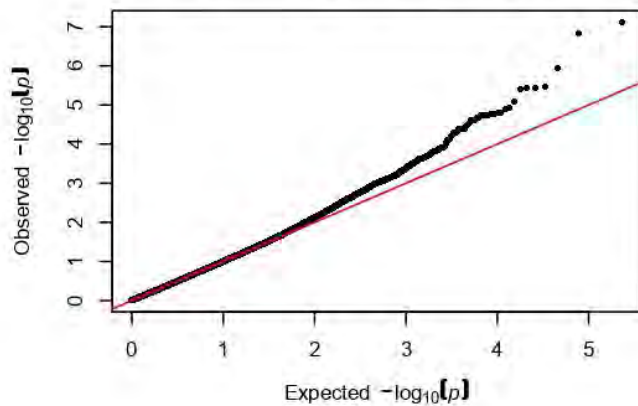
beta-pinene (optimal MLMM)



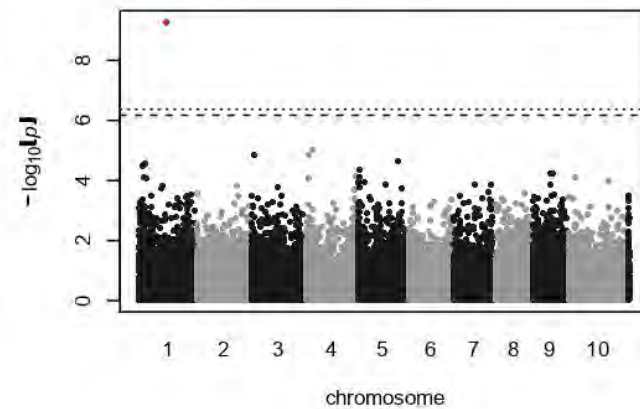
myrcene (standard MLM)



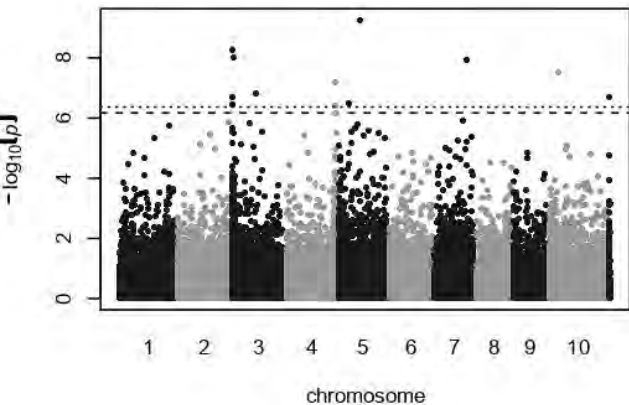
myrcene QQ plot (standard MLM)



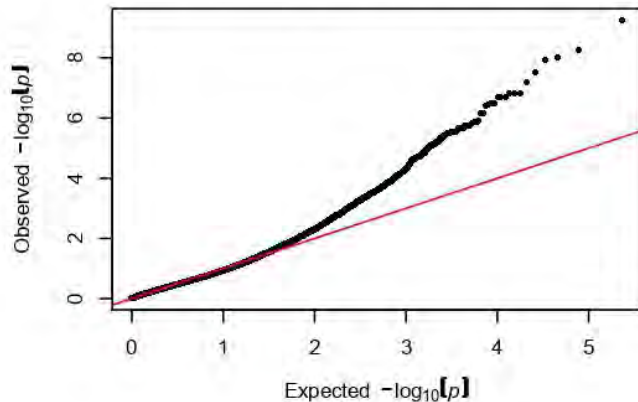
myrcene (optimal MLMM)



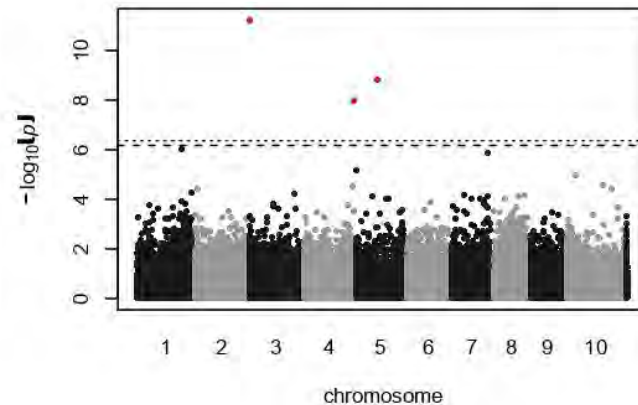
alpha-phellandrene (standard MLM)



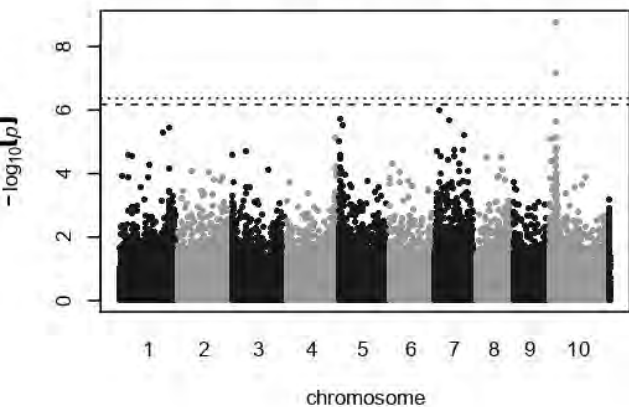
alpha-phellandrene QQ plot (standard MLM)



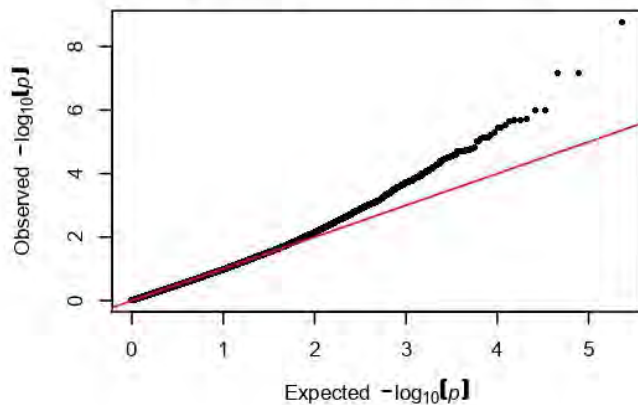
alpha-phellandrene (optimal MLMM)



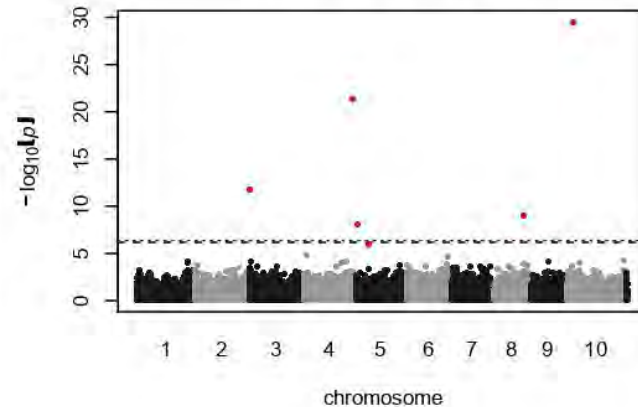
delta-3-carene (standard MLM)



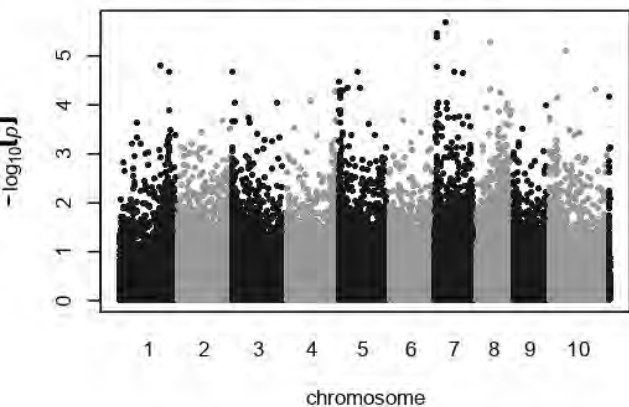
delta-3-carene QQ plot (standard MLM)



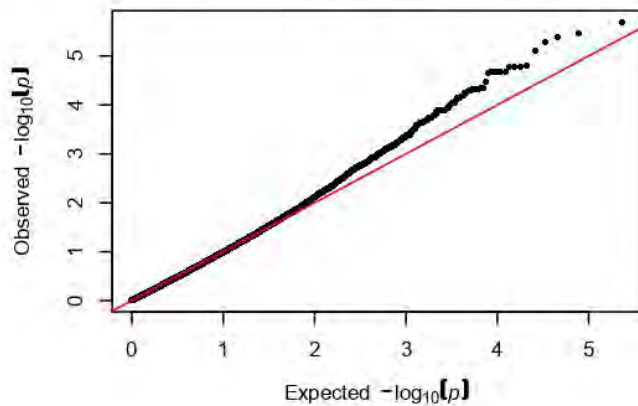
delta-3-carene (optimal MLMM)



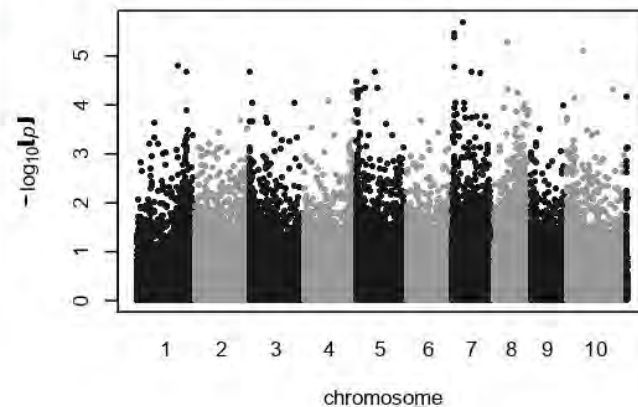
ocimene (standard MLM)



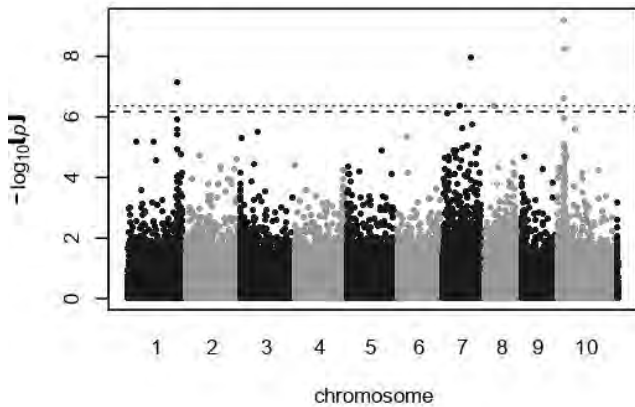
ocimene QQ plot (standard MLM)



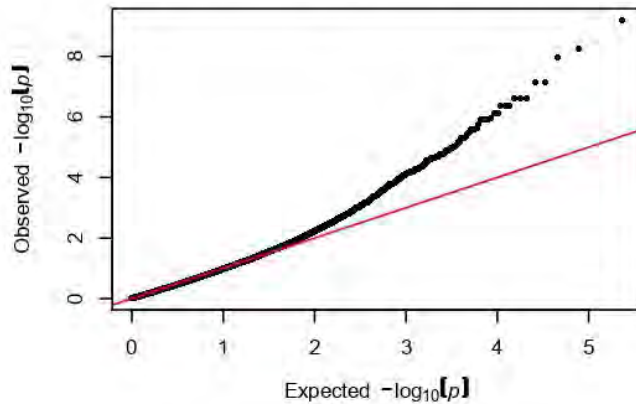
ocimene (optimal MLMM)



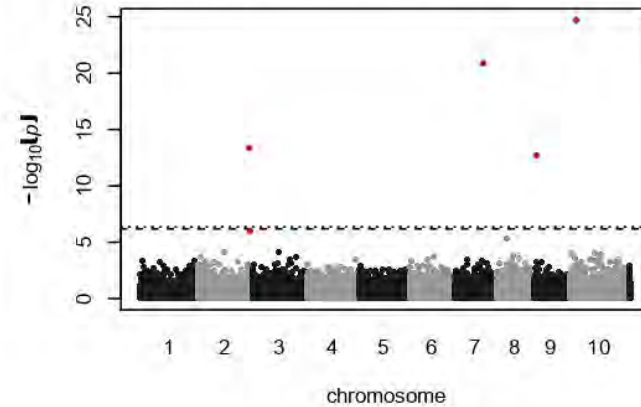
gamma-terpinene (standard MLM)



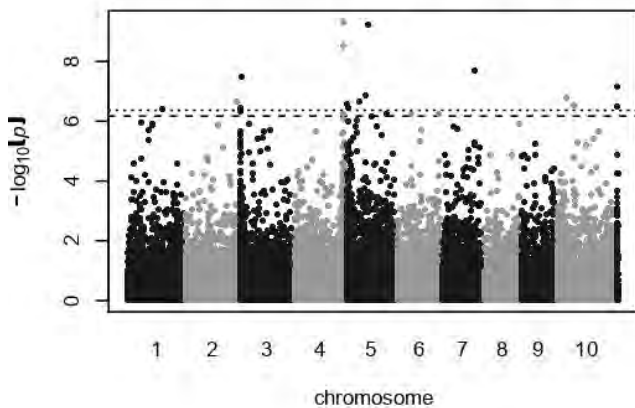
gamma-terpinene QQ plot (standard MLM)



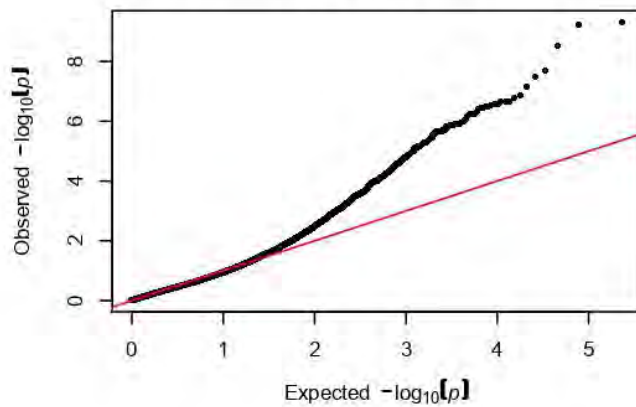
gamma-terpinene (optimal MLMM)



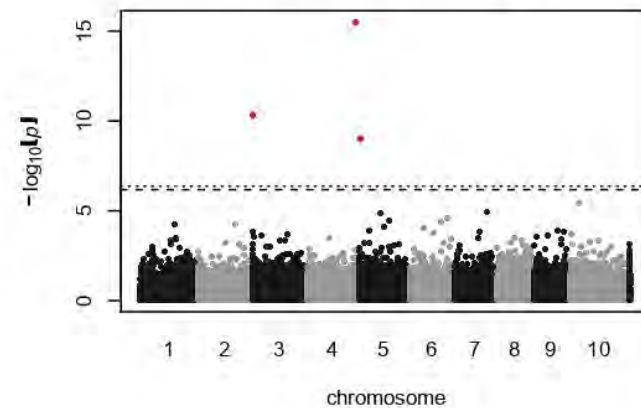
terpinolene* (standard MLM)



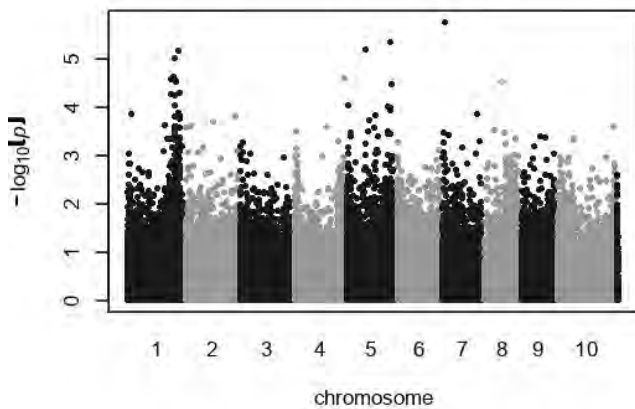
terpinolene* QQ plot (standard MLM)



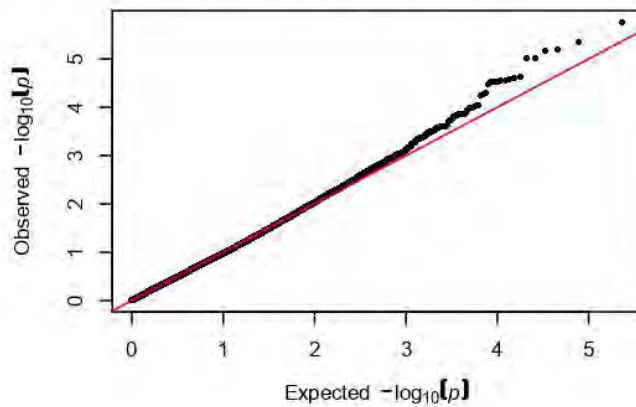
terpinolene* (optimal MLMM)



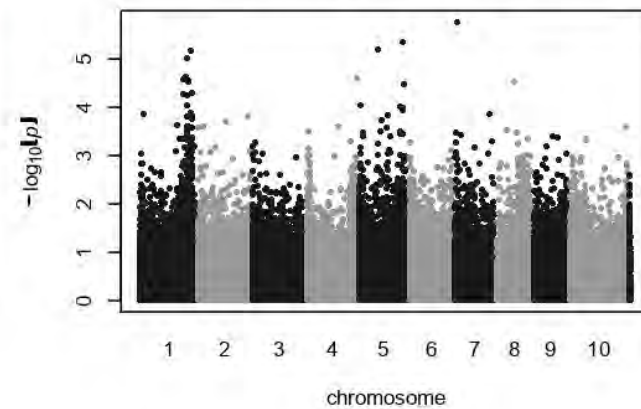
linalool (standard MLM)



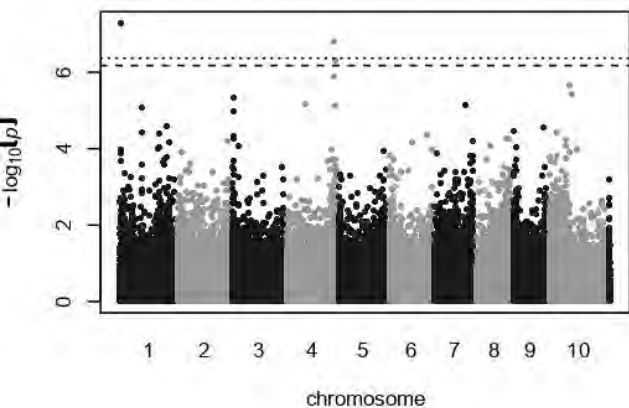
linalool QQ plot (standard MLM)



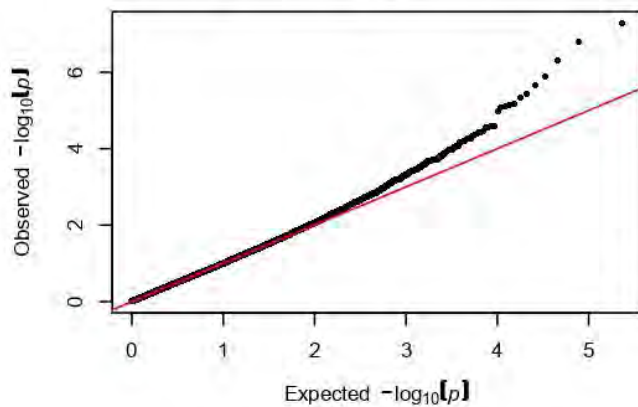
linalool (optimal MLMM)



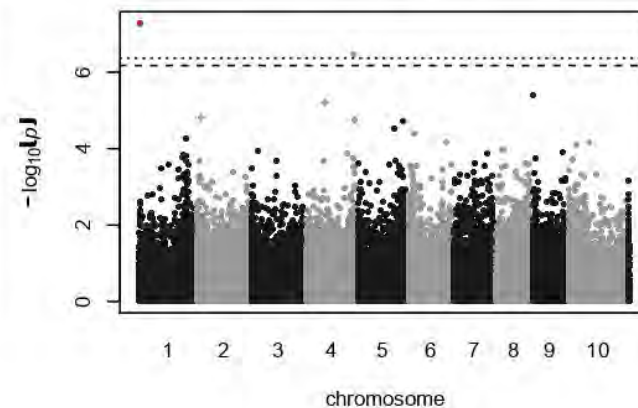
limonene* (standard MLM)



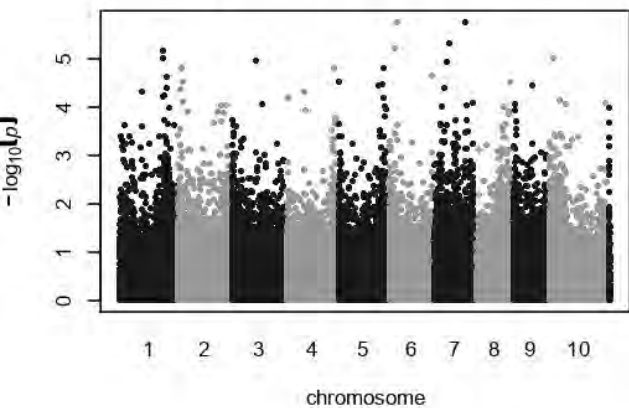
limonene* QQ plot (standard MLM)



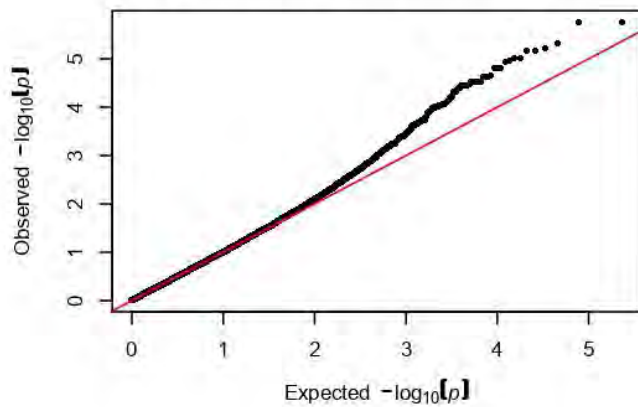
limonene* (optimal MLMM)



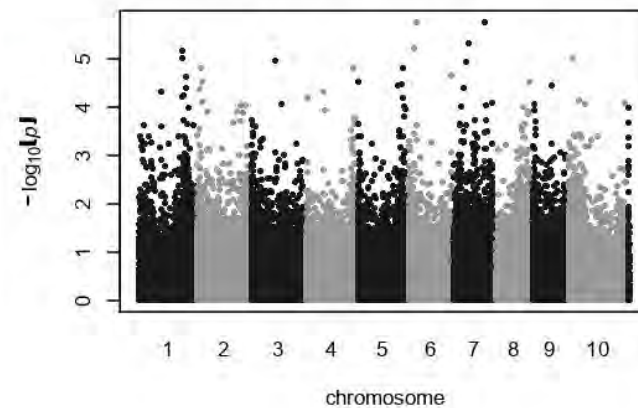
fenchol (standard MLM)



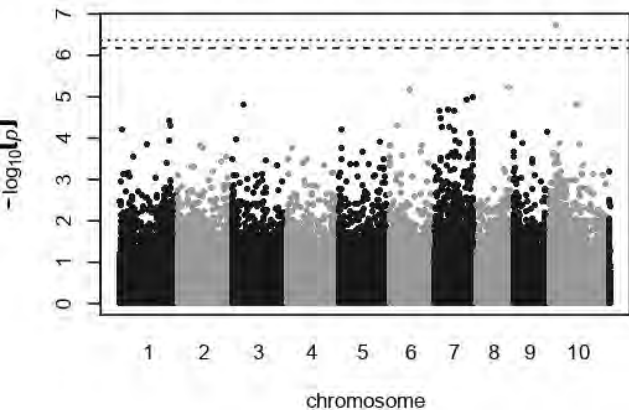
fenchol QQ plot (standard MLM)



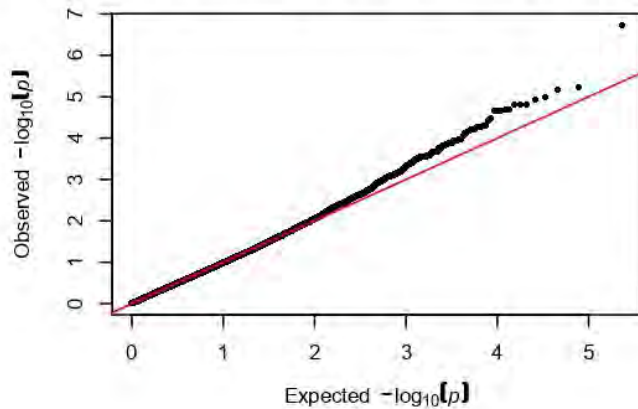
fenchol (optimal MLMM)



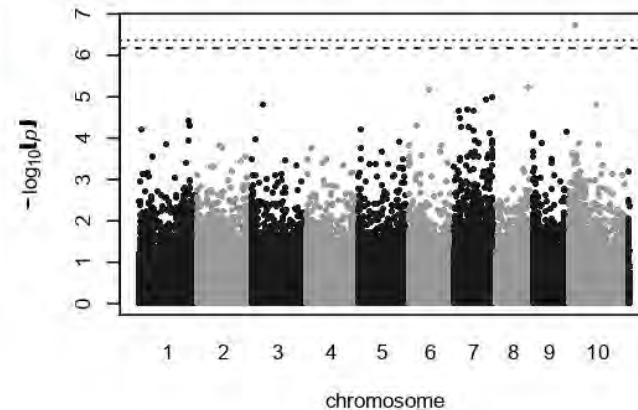
sabinene hydrate* (standard MLM)



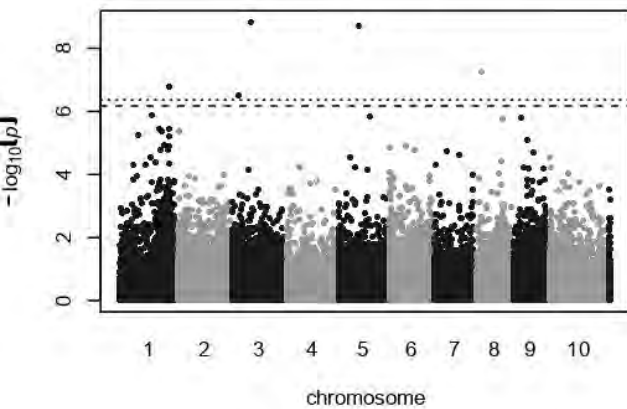
sabinene hydrate* QQ plot (standard MLM)



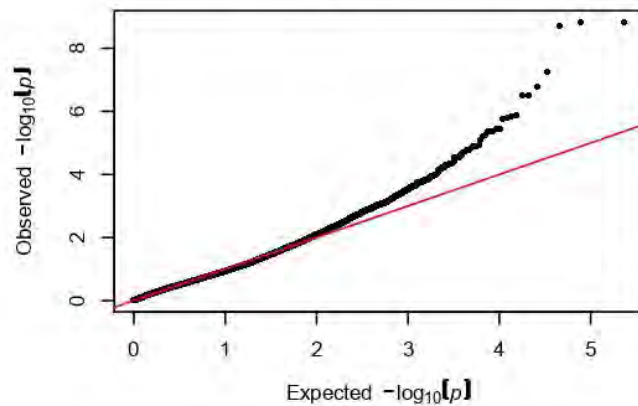
sabinene hydrate* (optimal MLMM)



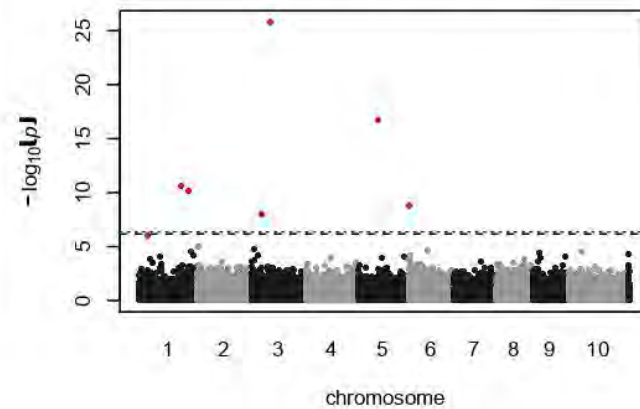
camphor (standard MLM)



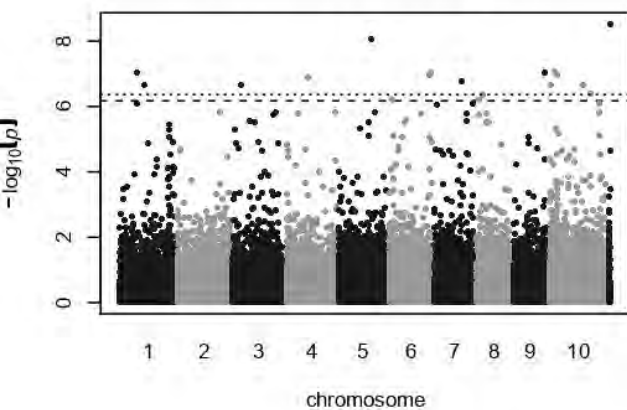
camphor QQ plot (standard MLM)



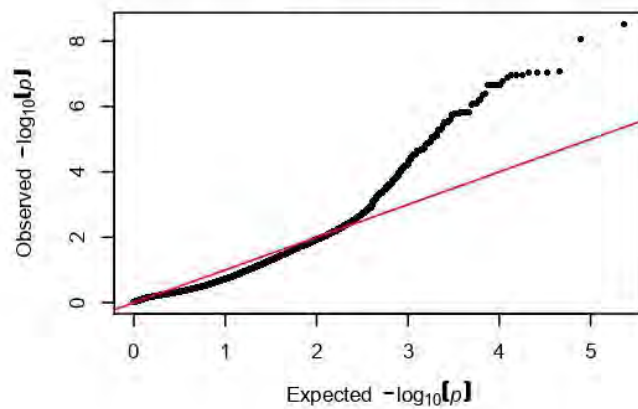
camphor (optimal MLMM)



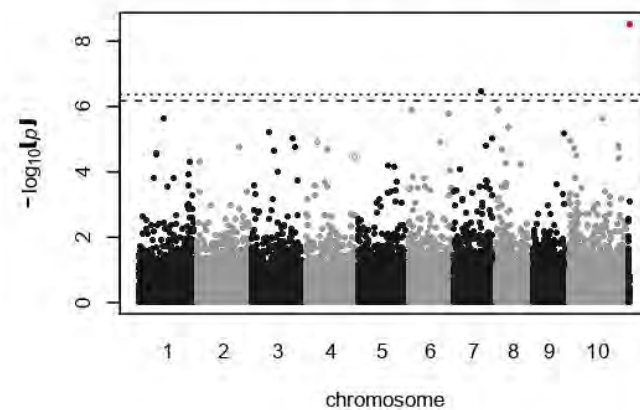
borneol (standard MLM)



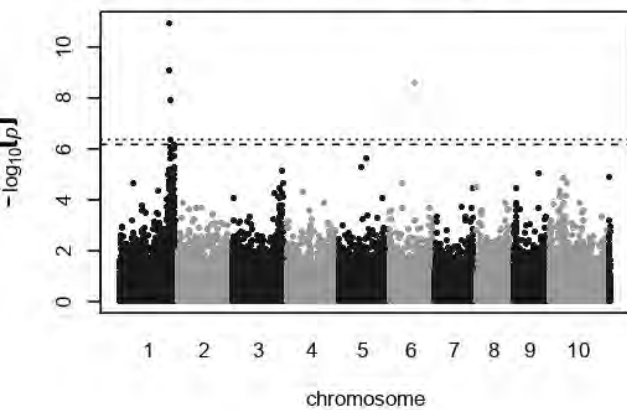
borneol QQ plot (standard MLM)



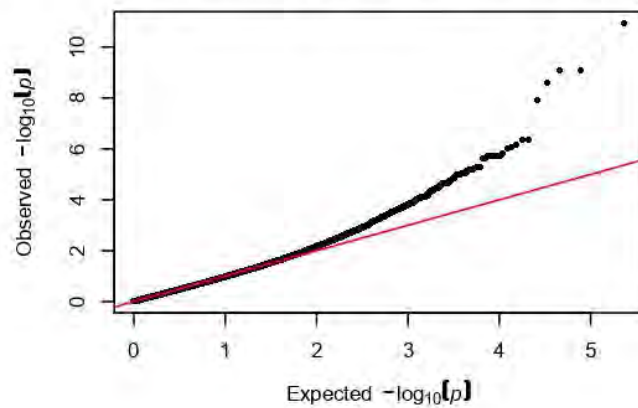
borneol (optimal MLMM)



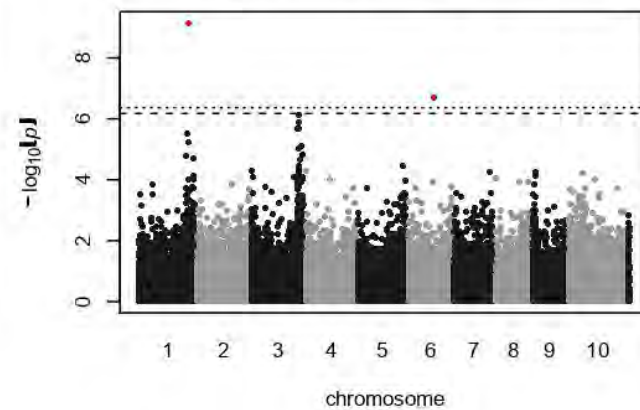
terpineol (standard MLM)



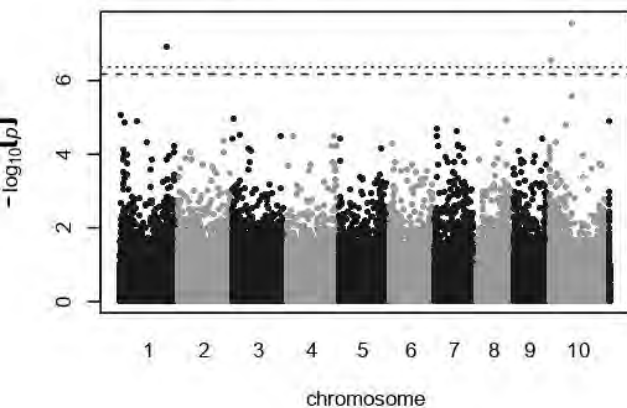
terpineol QQ plot (standard MLM)



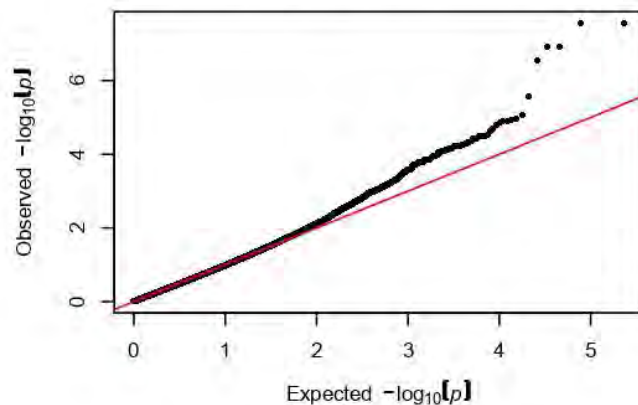
terpineol (optimal MLMM)



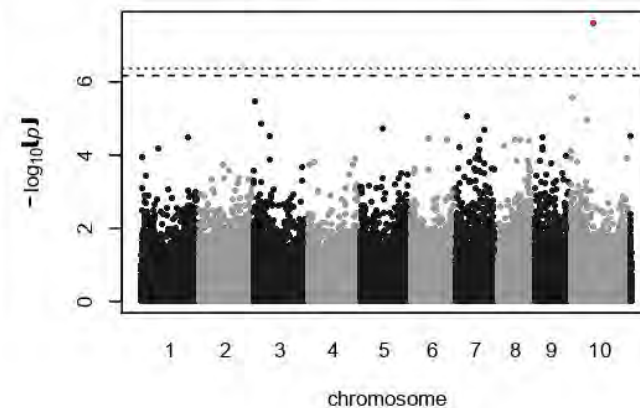
unidentified compound 1 (standard MLM)



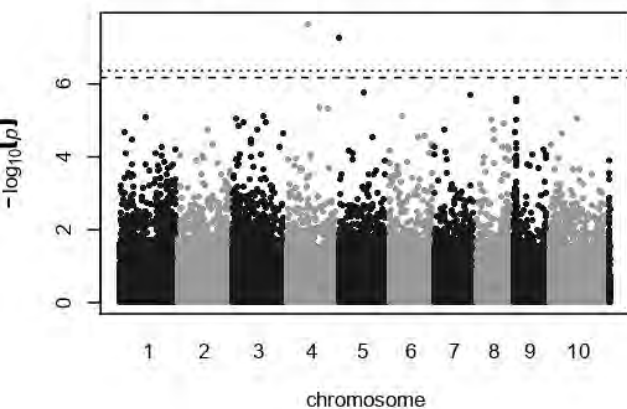
unidentified compound 1 QQ plot (standard MLM)



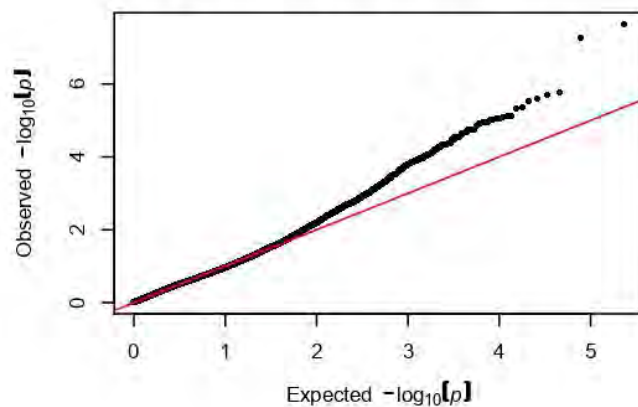
unidentified compound 1 (optimal MLMM)



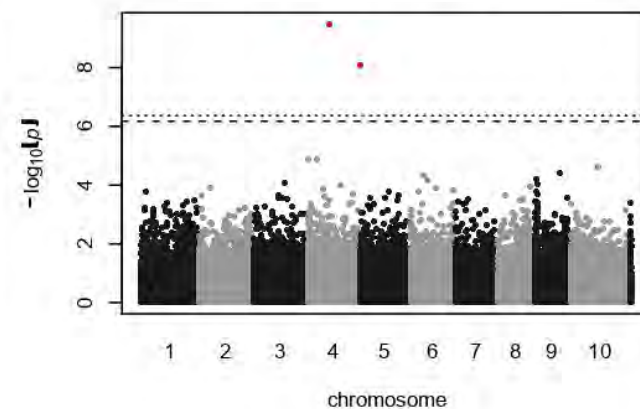
delta-guaiene* (standard MLM)



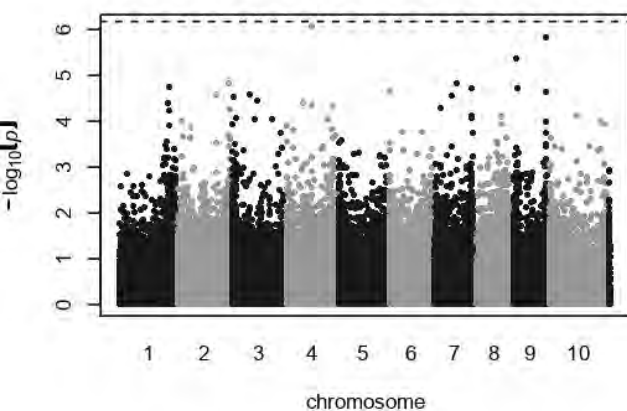
delta-guaiene* QQ plot (standard MLM)



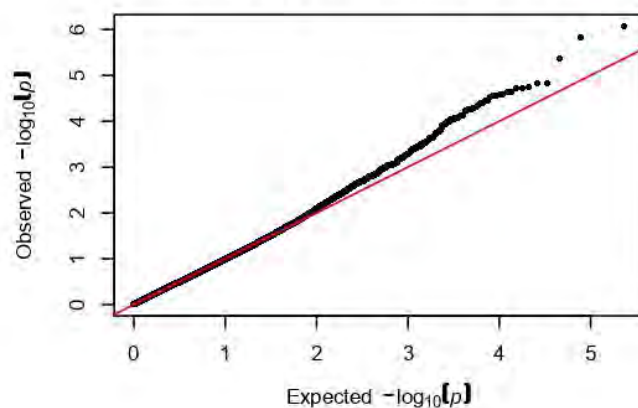
delta-guaiene* (optimal MLMM)



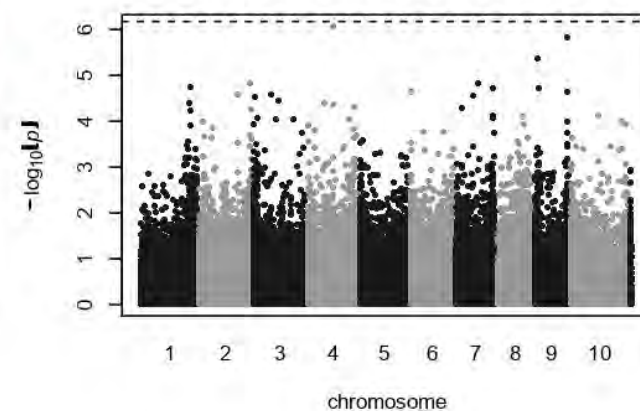
caryophyllene (standard MLM)



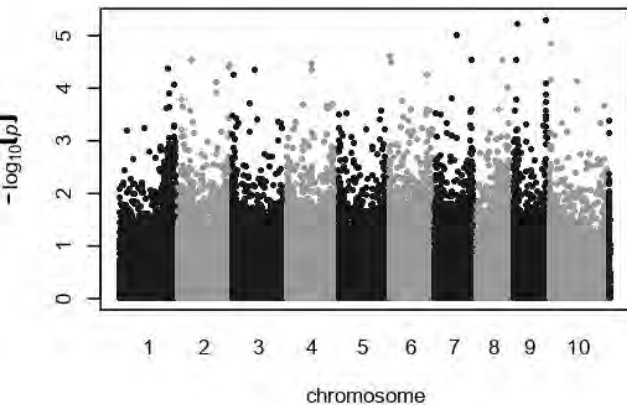
caryophyllene QQ plot (standard MLM)



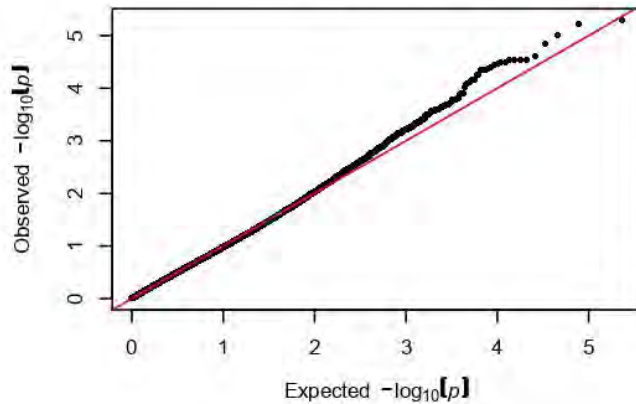
caryophyllene (optimal MLMM)



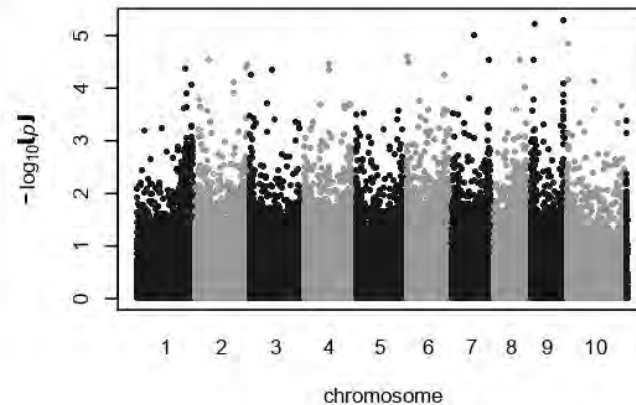
alpha-humulene (standard MLM)



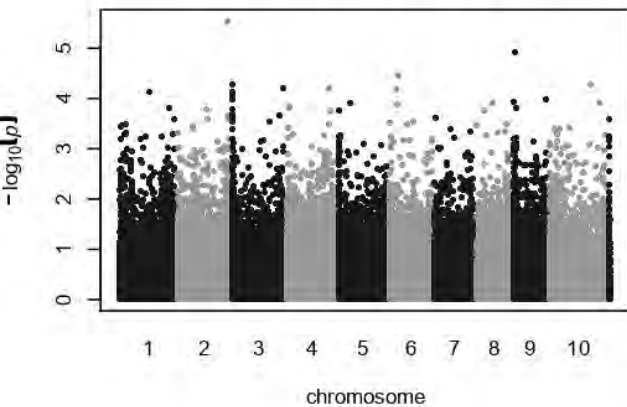
alpha-humulene QQ plot (standard MLM)



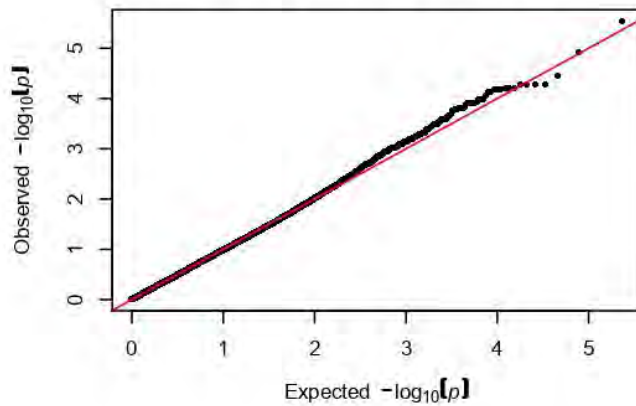
alpha-humulene (optimal MLMM)



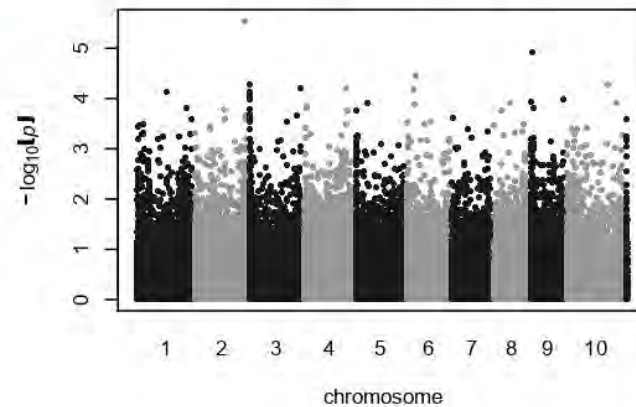
gamma-cadinene* (standard MLM)



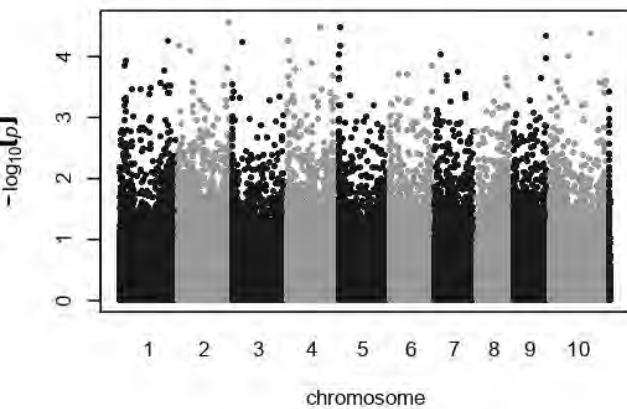
gamma-cadinene* QQ plot (standard MLM)



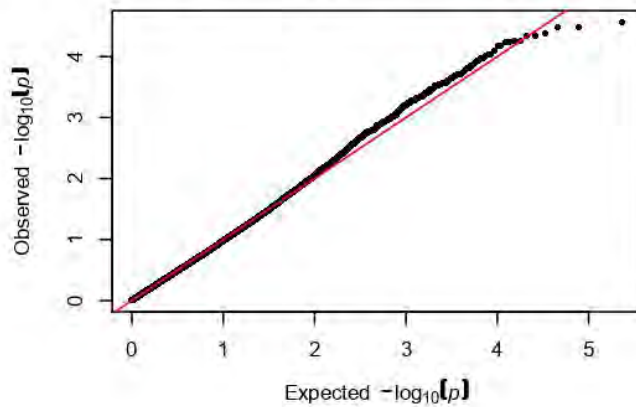
gamma-cadinene* (optimal MLMM)



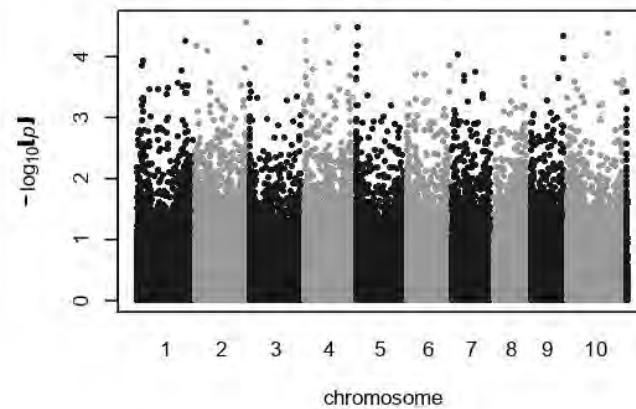
eudesma* (standard MLM)



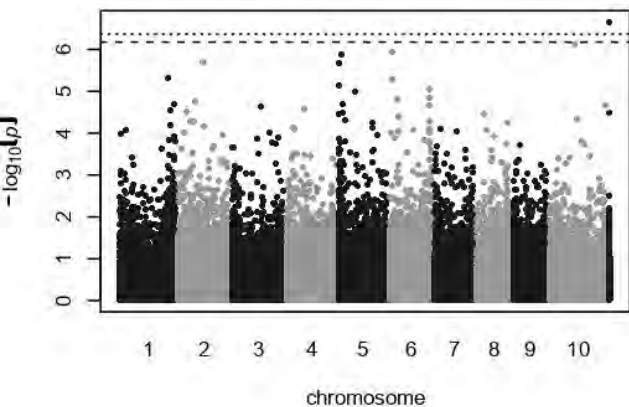
eudesma* QQ plot (standard MLM)



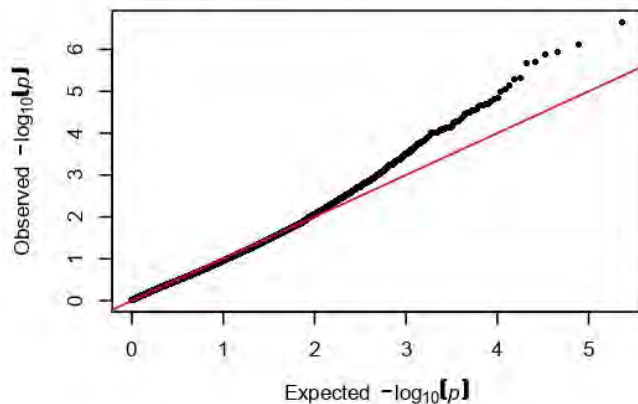
eudesma* (optimal MLMM)



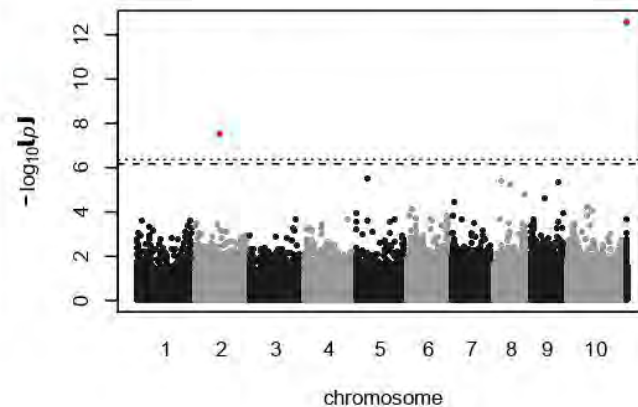
unidentified compound 2 (standard MLM)



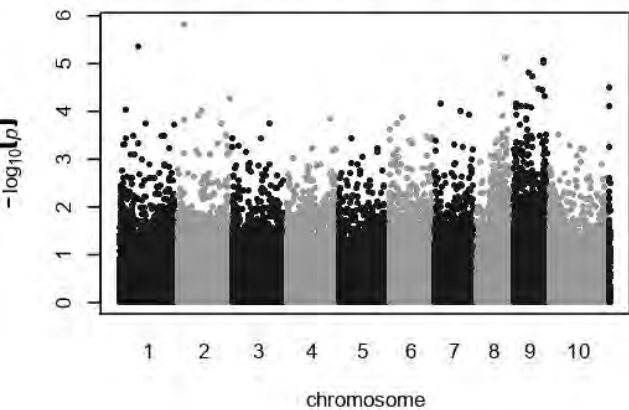
unidentified compound 2 QQ plot (standard MLM)



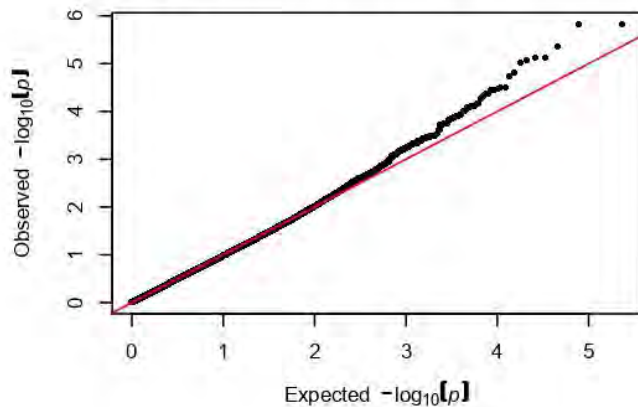
unidentified compound 2 (optimal MLMM)



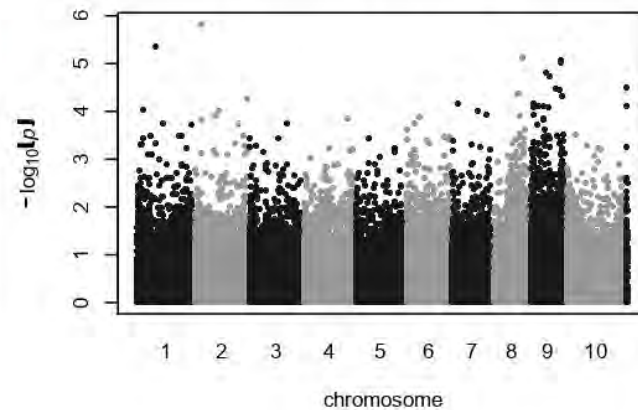
alpha-guaiene* (standard MLM)



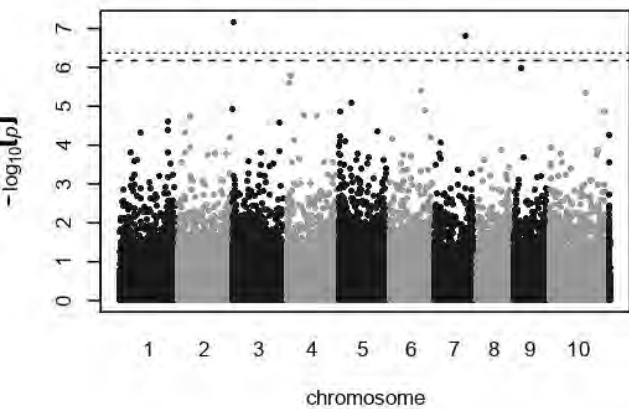
alpha-guaiene* QQ plot (standard MLM)



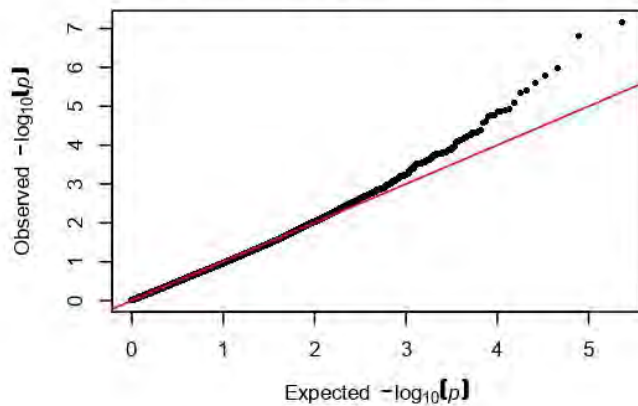
alpha-guaiene* (optimal MLMM)



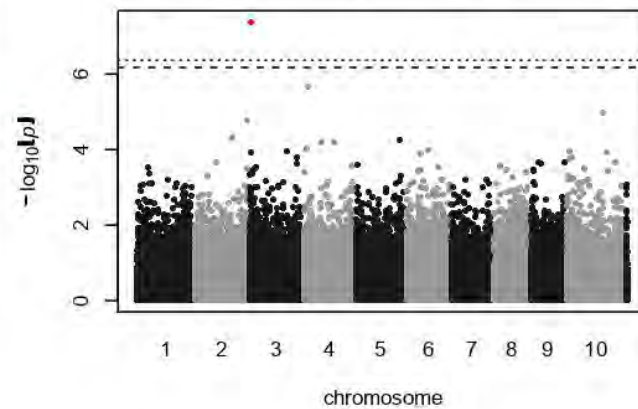
gamma-selinene* (standard MLM)



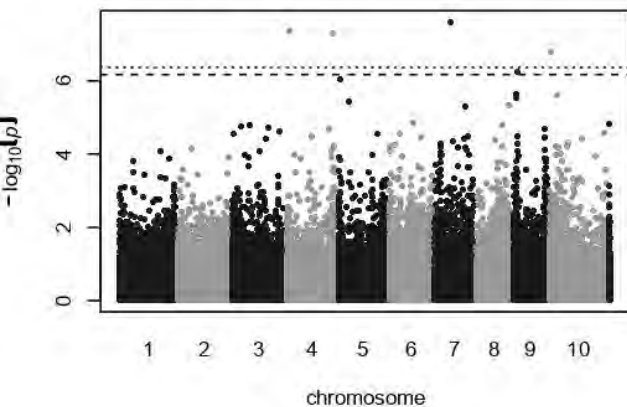
gamma-selinene* QQ plot (standard MLM)



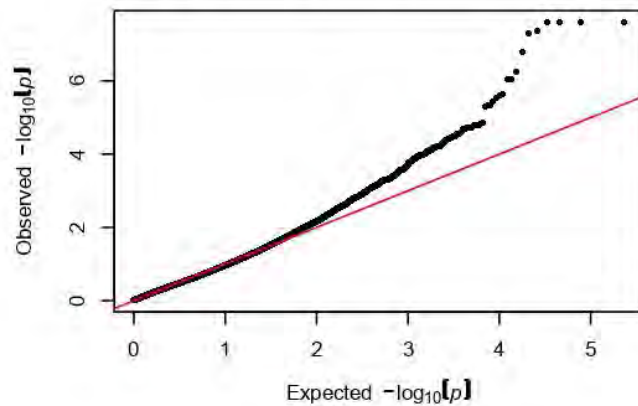
gamma-selinene* (optimal MLMM)



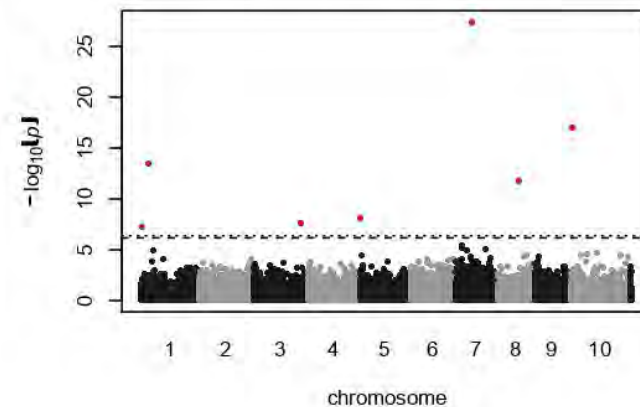
gurjunen* (standard MLM)



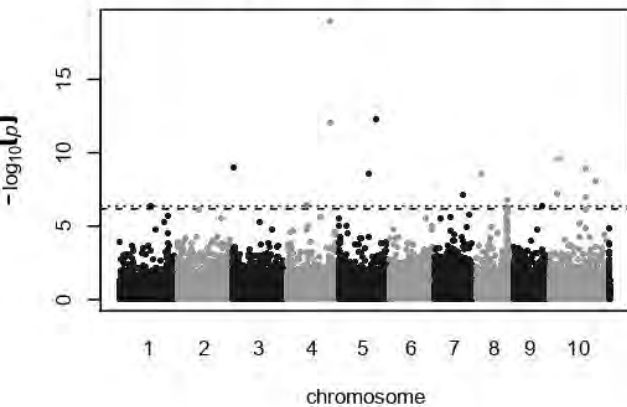
gurjunen* QQ plot (standard MLM)



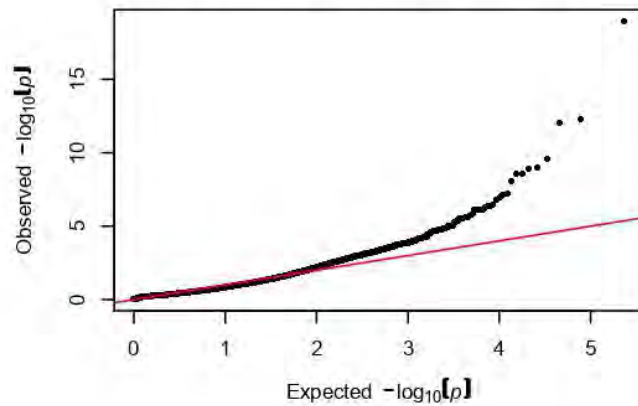
gurjunen* (optimal MLMM)



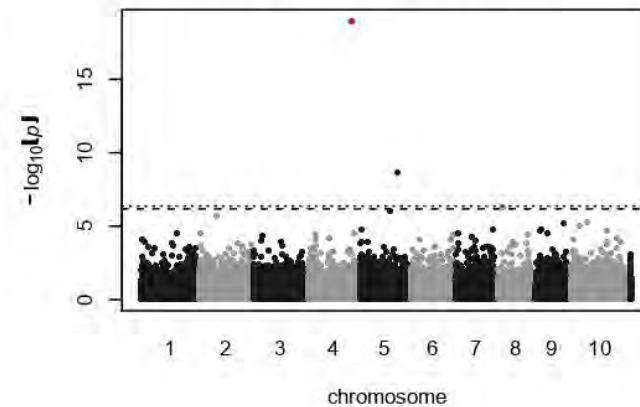
caryophyllene oxide (standard MLM)



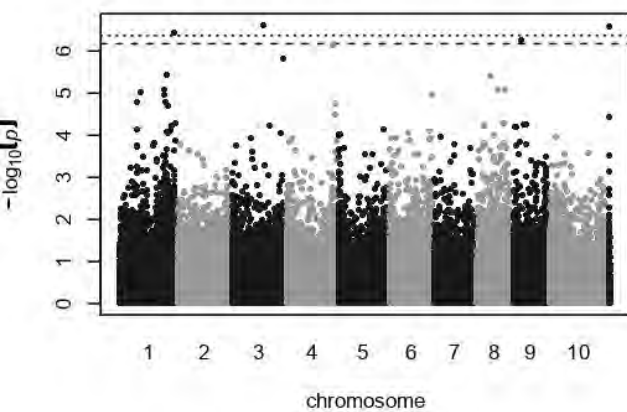
caryophyllene oxide QQ plot (standard MLM)



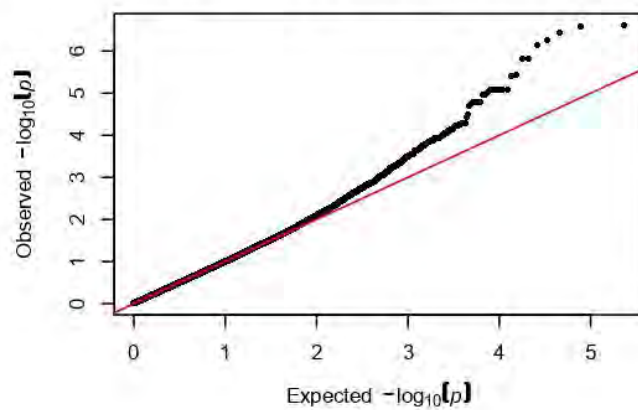
caryophyllene oxide (optimal MLMM)



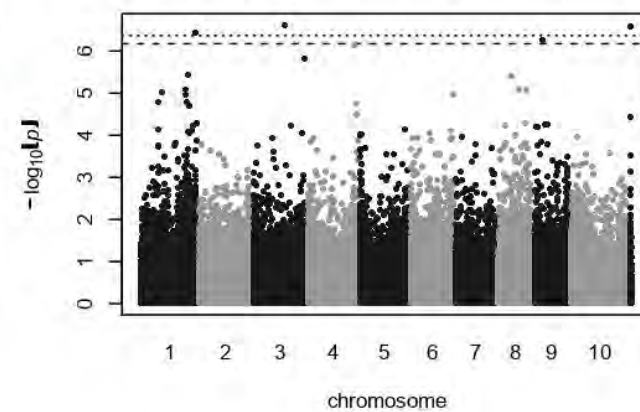
bergamotene* (standard MLM)



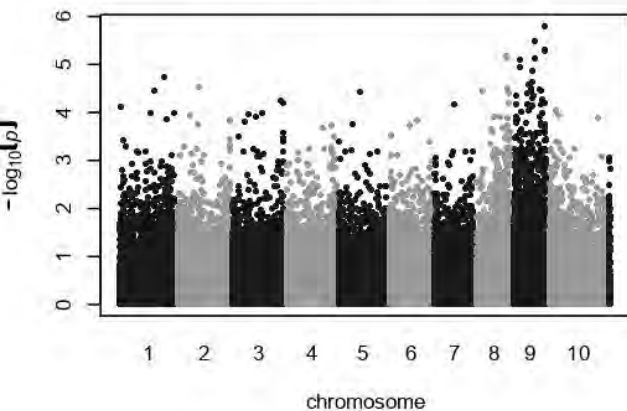
bergamotene* QQ plot (standard MLM)



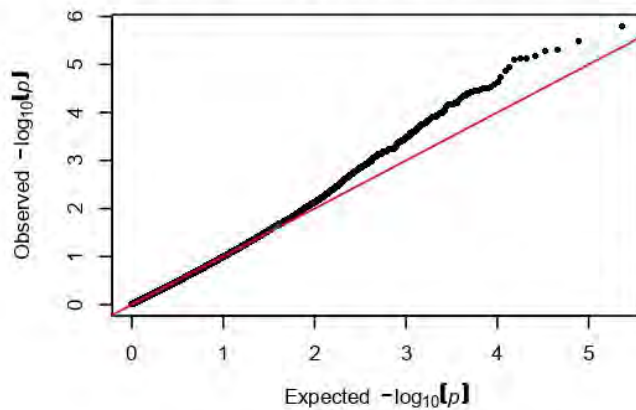
bergamotene* (optimal MLMM)



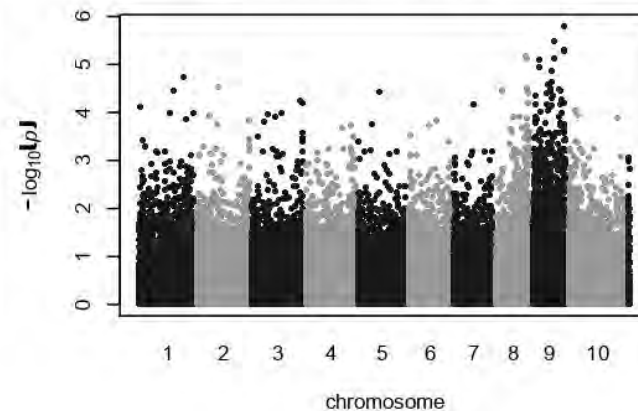
farnesene (standard MLM)



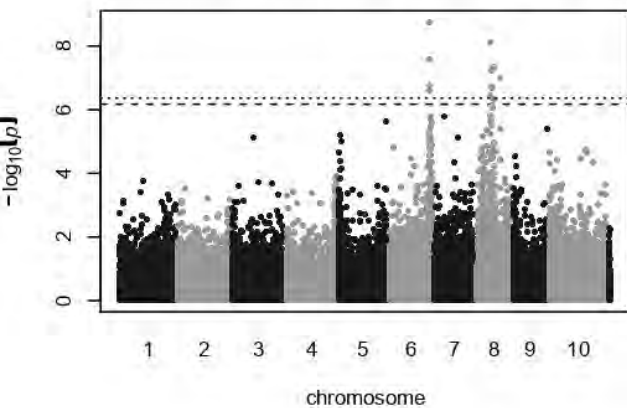
farnesene QQ plot (standard MLM)



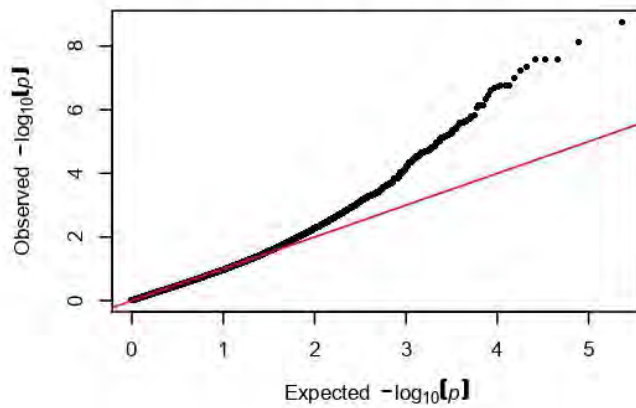
farnesene (optimal MLMM)



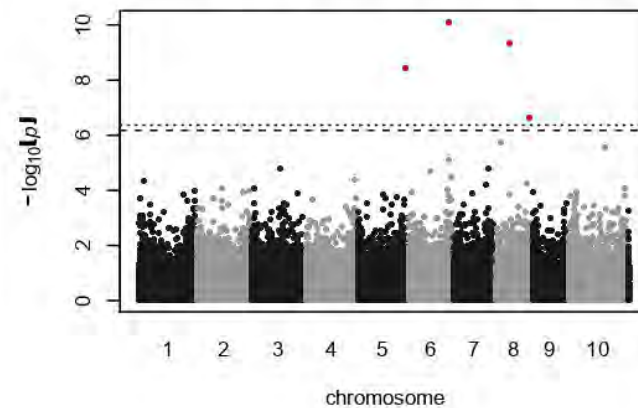
aromadendrene (standard MLM)



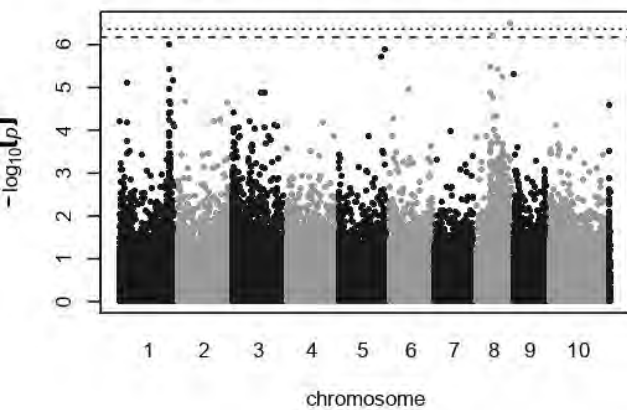
aromadendrene QQ plot (standard MLM)



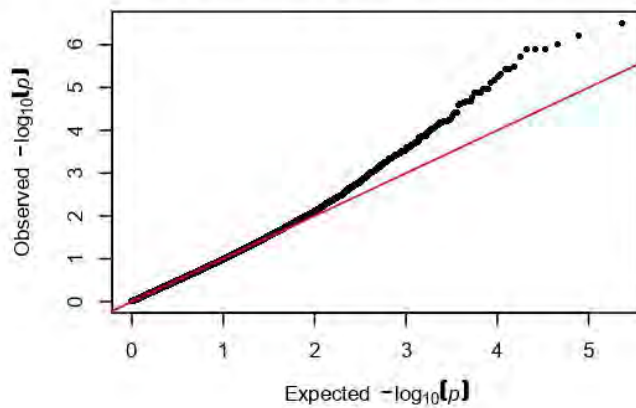
aromadendrene (optimal MLMM)



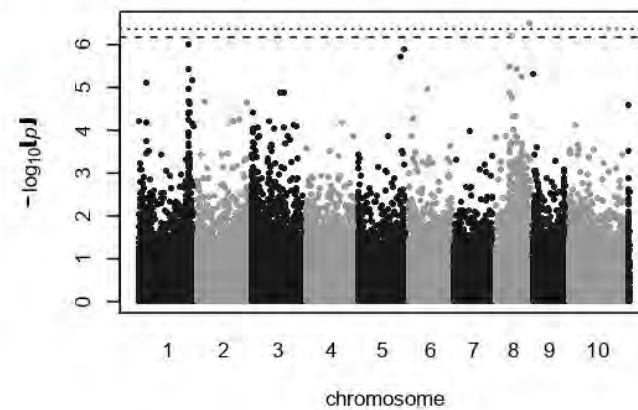
gamma-elemene* (standard MLM)



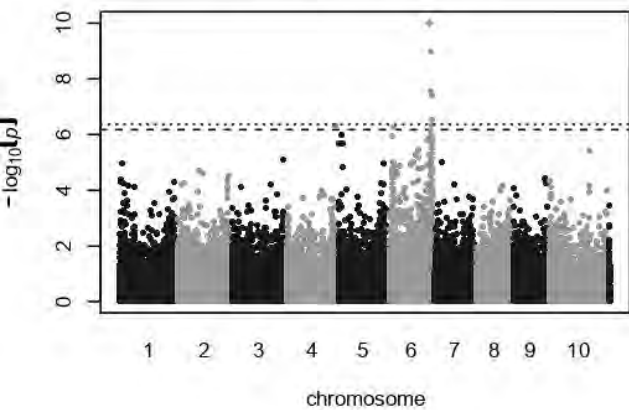
gamma-elemene* QQ plot (standard MLM)



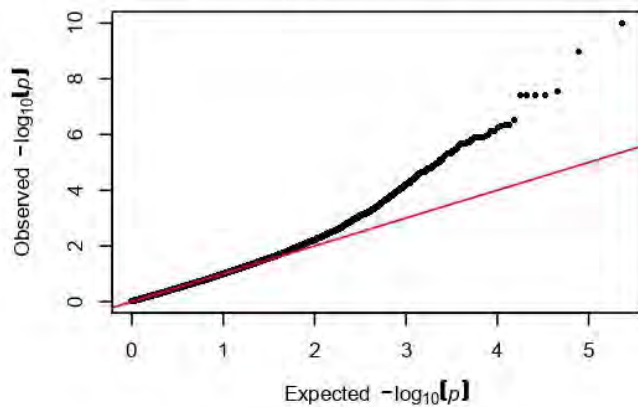
gamma-elemene* (optimal MLMM)



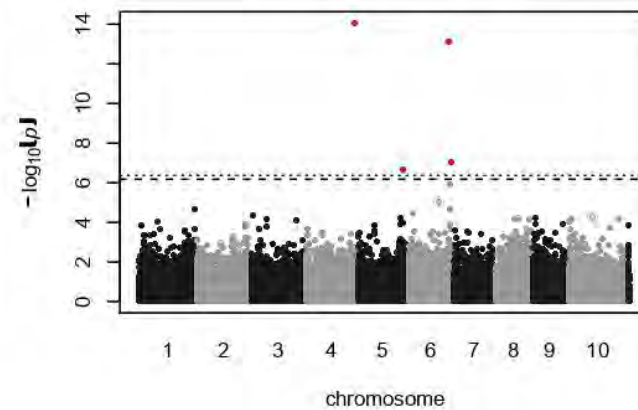
guaiol* (standard MLM)



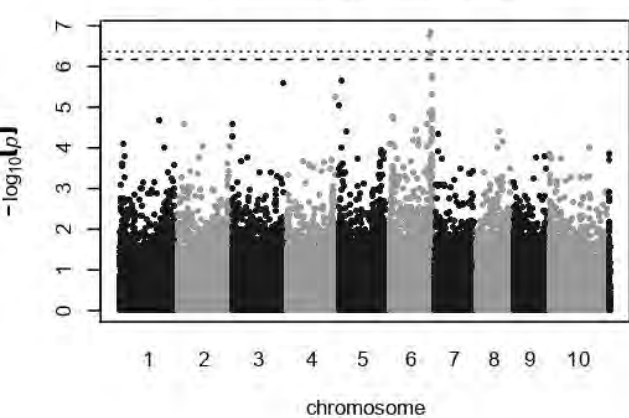
guaiol* QQ plot (standard MLM)



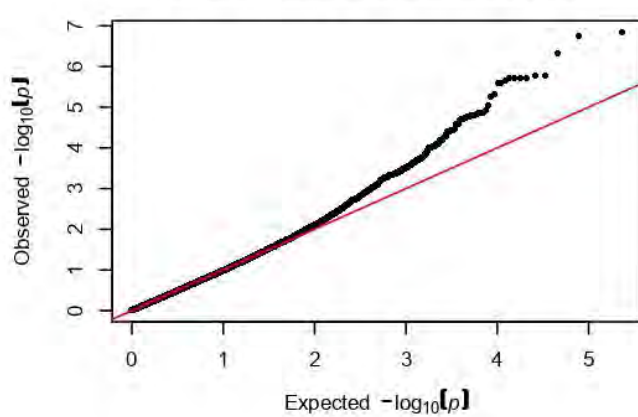
guaiol* (optimal MLMM)



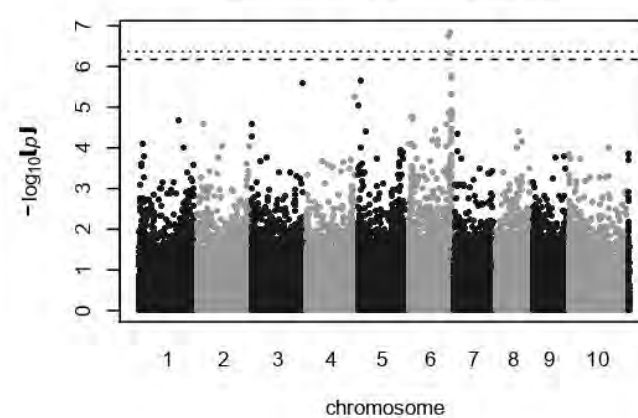
gamma-eudesmol* (standard MLM)



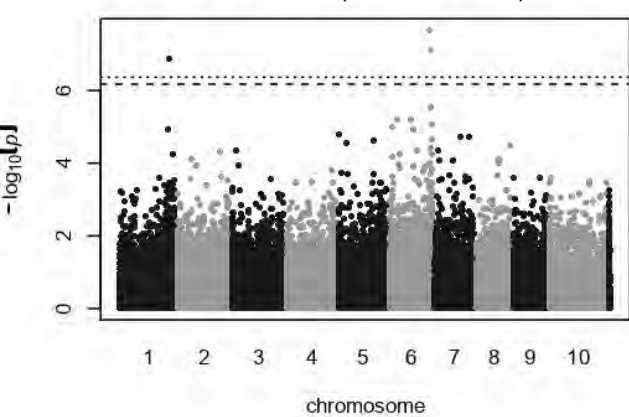
gamma-eudesmol* QQ plot (standard MLM)



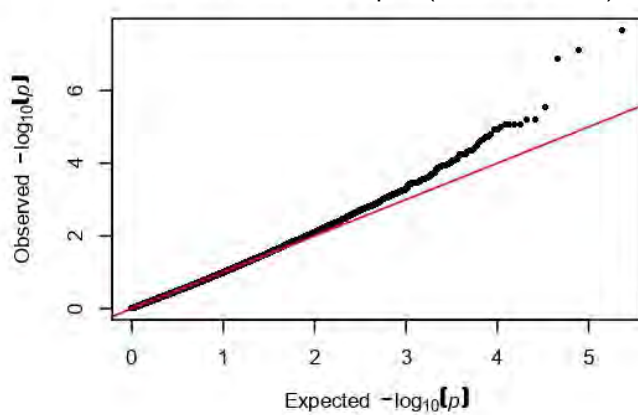
gamma-eudesmol* (optimal MLMM)



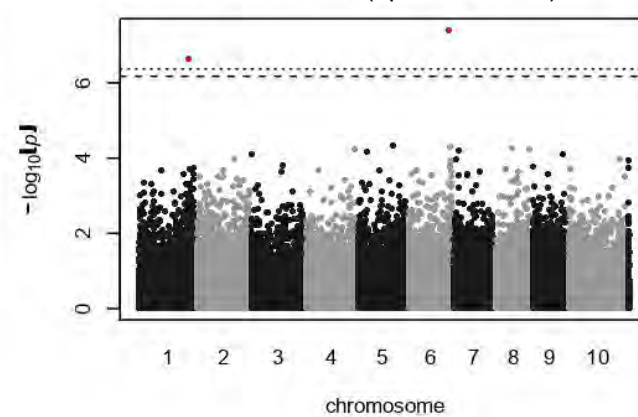
beta-eudesmol (standard MLM)



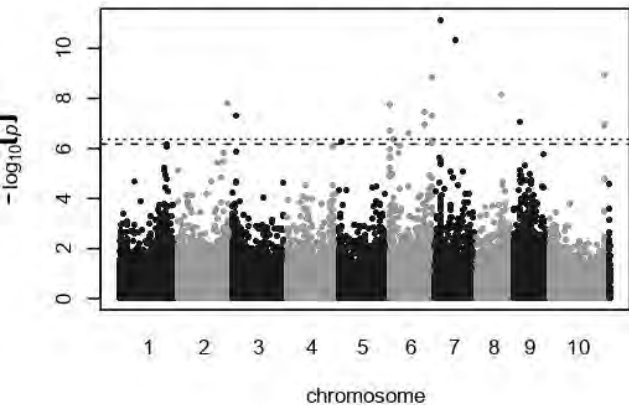
beta-eudesmol QQ plot (standard MLM)



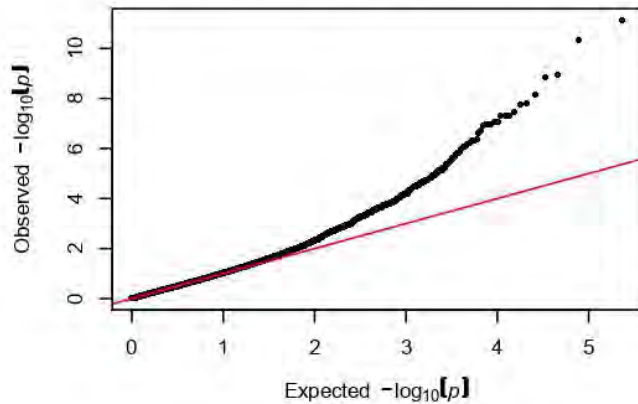
beta-eudesmol (optimal MLMM)



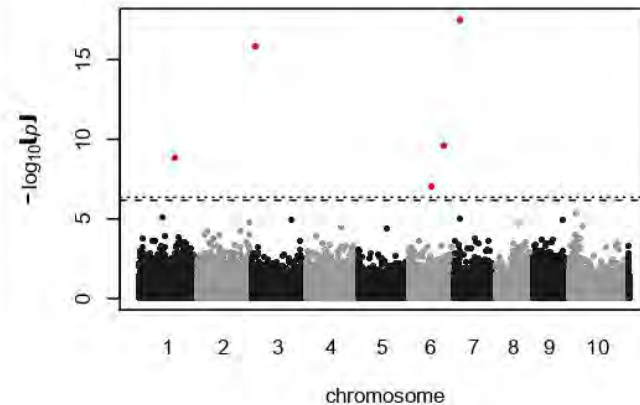
alpha-bisabolol (standard MLM)



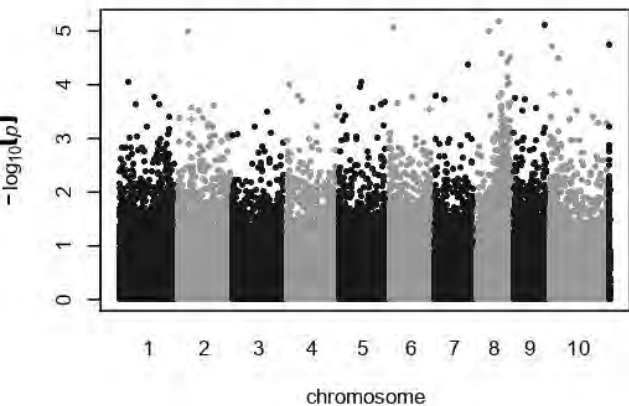
alpha-bisabolol QQ plot (standard MLM)



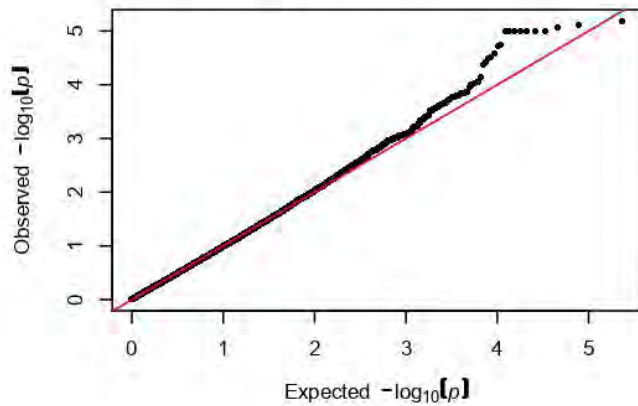
alpha-bisabolol (optimal MLMM)



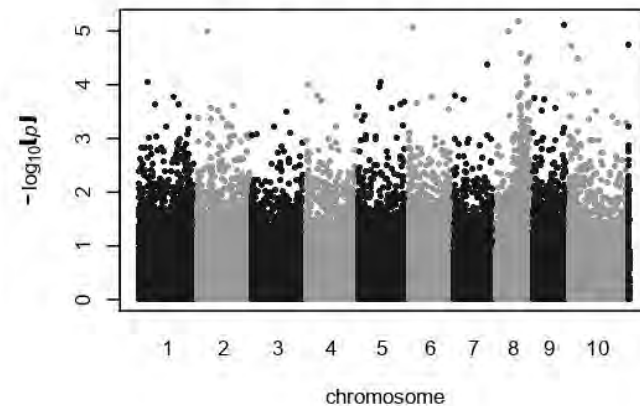
THC (standard MLM)



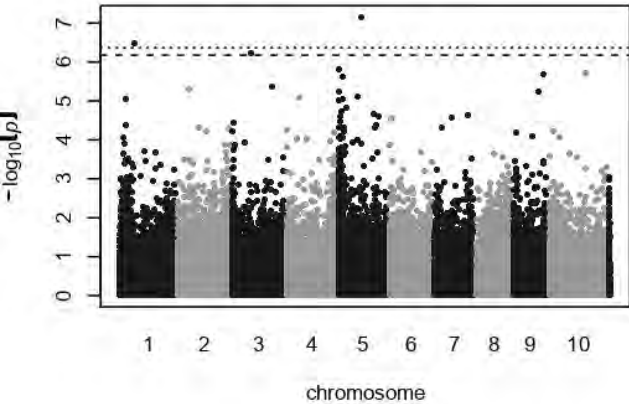
THC QQ plot (standard MLM)



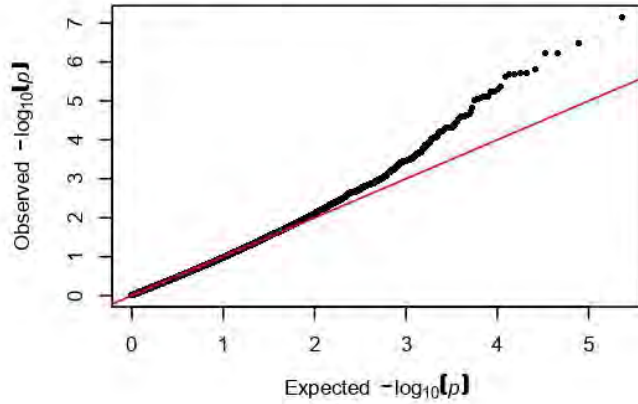
THC (optimal MLMM)



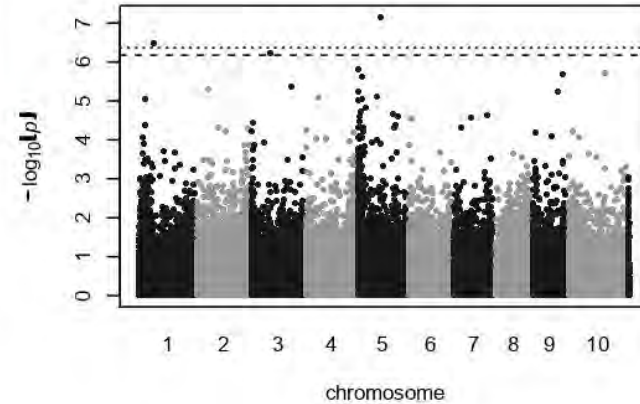
CBG (standard MLM)



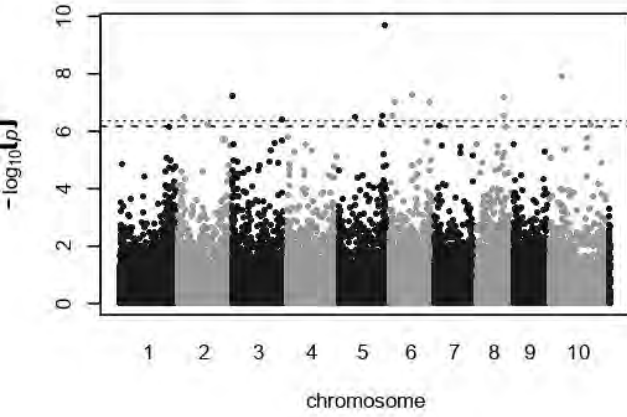
CBG QQ plot (standard MLM)



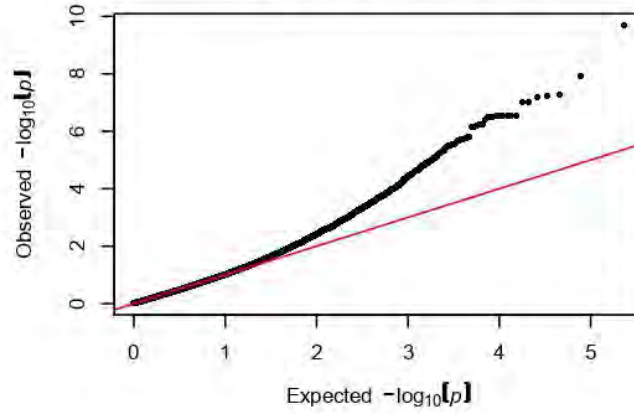
CBG (optimal MLMM)



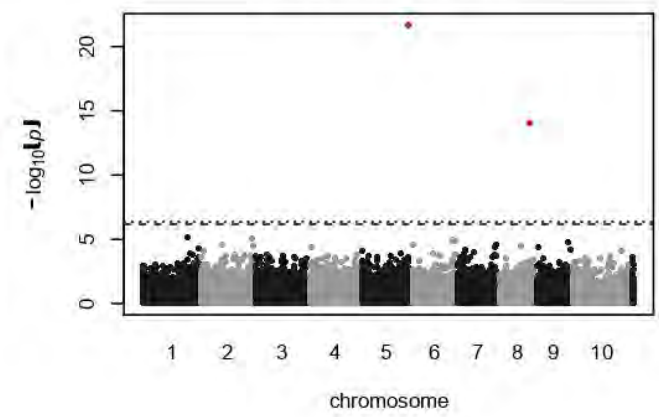
CBC (standard MLM)



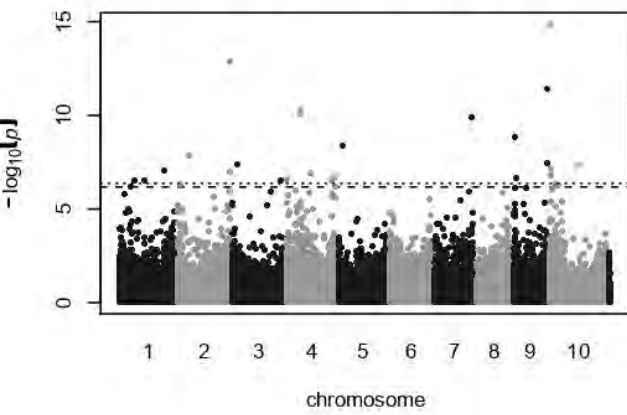
CBC QQ plot (standard MLM)



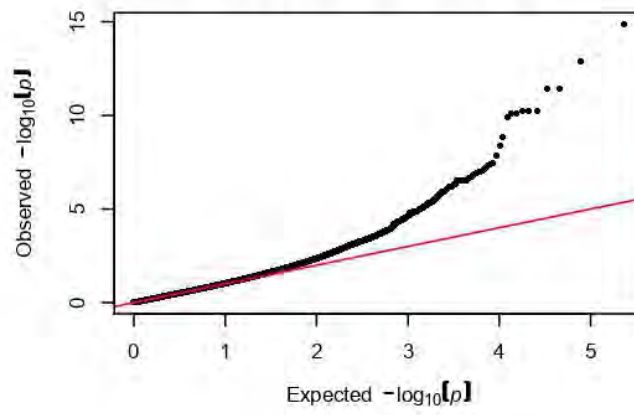
CBC (optimal MLM)



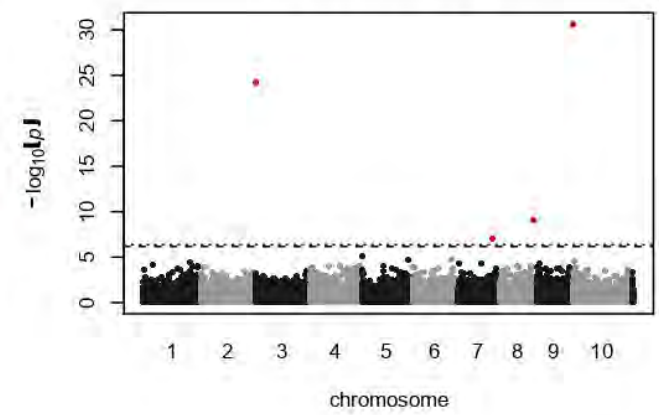
THCV (standard MLM)



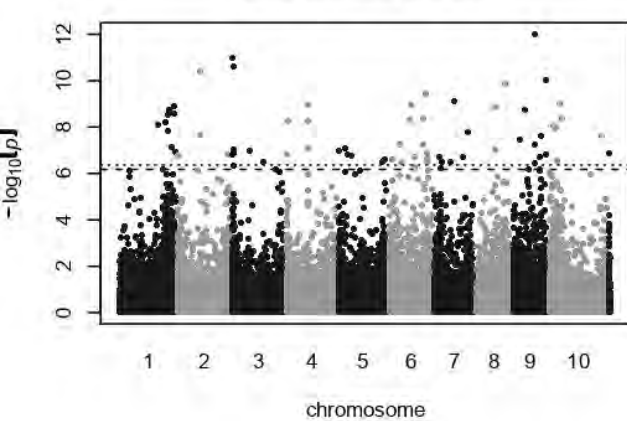
THCV QQ plot (standard MLM)



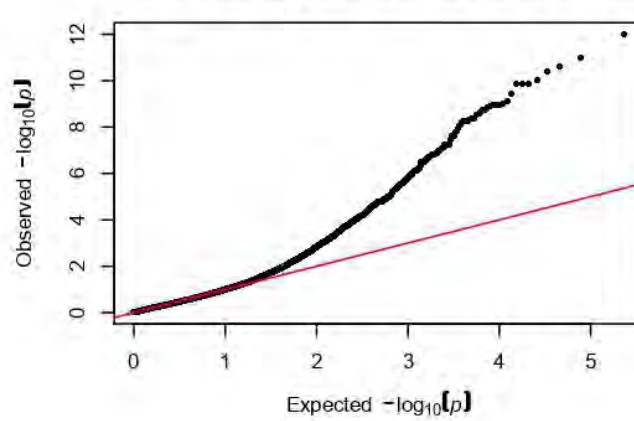
THCV (optimal MLM)



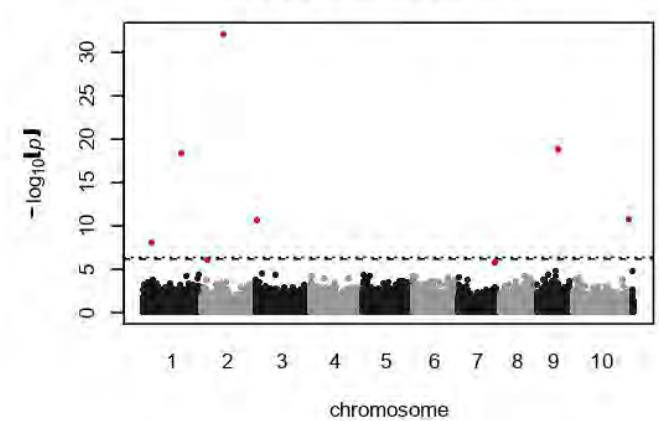
CBD (standard MLM)



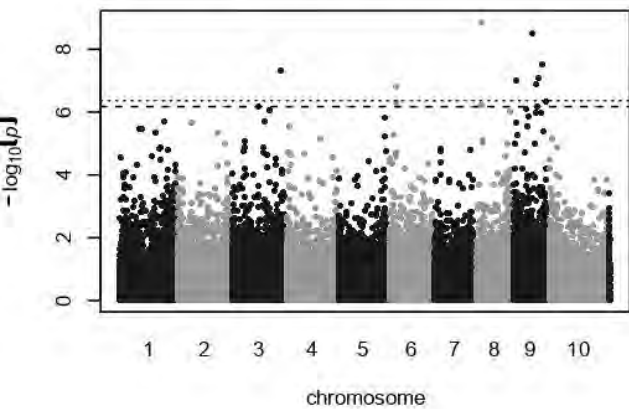
CBD QQ plot (standard MLM)



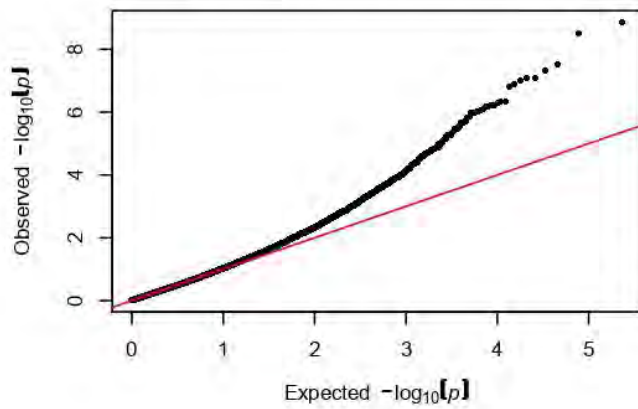
CBD (optimal MLM)



CBGM* (standard MLM)



CBGM* QQ plot (standard MLM)



CBGM* (optimal MLMM)

