

D-41
5/66



DALHOUSIE
LIBRARY

SEVENTEENTH GOVERNMENT DOCUMENTS
ANNUAL
REPORT

**ON ACTIVITIES UNDER THE
MARITIME MARSHLAND
REHABILITATION ACT
FOR THE FISCAL YEAR
ENDED MARCH 31, 1966**

MARITIME MARSHLAND REHABILITATION ADMINISTRATION

DEPARTMENT OF FORESTRY, CANADA

DOC

2FG
A

D-D-41

1965/66

1965/66

DOC

2FG

A
OD-41
1956/66

CONTENTS

	Page
Introduction.....	1
Administration and Organization.....	3
Review of Progress to Date.....	5
Projects and Acreages Protected.....	5
Construction of Works.....	5
The Construction Program for 1965-66.....	7
Standard Projects.....	7
Special Projects.....	9
Investigations for ARDA.....	9
Appendix I - Active Projects on March 31, 1966.....	13
Appendix II - Expenditures, Fiscal Years 1949-1965 and 1965-1966.....	17
Appendix III - Graph Showing Area Incorporated - Area Protected.....	21
Appendix IV - MMRA Studies and Investigations for ARDA Projects.....	23
Appendix V - General Location Maps - MMRA Studies for ARDA Projects.....	27

SEVENTEENTH ANNUAL REPORT OF ACTIVITIES UNDER THE MARITIME MARSHLAND REHABILITATION ACT, 1965-66

INTRODUCTION

The Maritime marshlands cover an estimated 100,000 acres principally around the Bay of Fundy.

Although the majority of farms consist largely of upland holdings, and farms consisting entirely of fertile marshlands are in the minority, the marshlands have long been considered important to the economy of the region. Some areas were protected for agricultural use over 300 years ago.

Federal assistance for the preservation and extension of this resource was arranged after a combination of factors had seriously handicapped the owners.

The Maritime Marshland Rehabilitation Act was passed in 1948. Under the Act, federal responsibility is to provide the main protective works, and that of the provinces is to assure proper land utilization.

The Act was administered by the Canada Department of Agriculture until early 1964 when this responsibility was transferred to the Department of Forestry of Canada. The Maritime Marshland Rehabilitation Administration is the departmental agency established for the program.

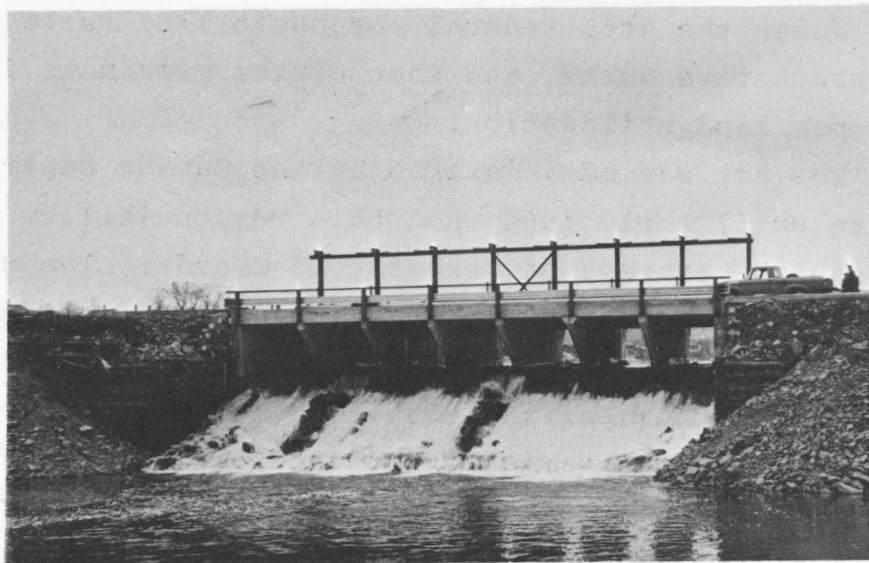
During the year 1965-66, negotiations were carried out with each of the three Maritime Provinces to provide for the orderly transfer from the federal government to the provincial governments of operation and maintenance responsibilities for works constructed under the MMRA program.

As part of the draft agreement, Canada has offered, on a continuing basis, engineering services to the provinces for soil and water conservation programs implemented under the



(Photo No. 566-18)

Figure 1 - Petitcodiac River Dam, Westmorland County, N.B. Start of excavation for the re-inforced concrete control structures, early in 1966.



(Photo No. 1164-8)

Figure 2 - Parrsboro Dam, Cumberland County, N.S. Combination highway and water control structure constructed under the ARDA program.

Agricultural Rehabilitation and Development Act.

MMRA has been the operating arm of ARDA in the Atlantic Provinces since 1963, and, in this capacity, will become the engineering agency responsible for providing the services outlined in the draft agreement.

ADMINISTRATION AND ORGANIZATION

The headquarters of the Maritime Marshland Rehabilitation Administration was established in Amherst, Nova Scotia, in the summer of 1949, under the control of a Director responsible to the Deputy Minister.

The Maritime Marshland Rehabilitation Advisory Committee was established early in the program and functioned as required under Section 8 of the Act. The Act states "No work shall be undertaken in any Province ... unless (a) the work has been recommended by an Advisory Committee".

On January 1, 1966 the Atlantic Regional Office of the Rural Development Branch of the department was located in Amherst, N.S. to administer the Agricultural Rehabilitation and Development Act and the Maritime Marshland Rehabilitation Act. The Maritime Marshland Rehabilitation Administration became the Soil and Water Division of the Regional Office.

The Administration Division of the Regional Office also services the MMRA activities.

The Engineering Division is divided into three categories:

- (a) Surveys, Design and Drafting
- (b) Construction Services
- (c) Workshop and Equipment.

Construction divisions operate from Amherst and Windsor, Nova Scotia, and temporary additional offices are established in the field, from time to time, as required.



(Photo No. 663-15)

Figure 3 - John Lusby Marsh, Cumberland County, N.S. Standard rock facing on tidal side of dyke. Rock protects dyke from wave action and tidal currents.



(Photo No. N.S. 112/1)

Figure 4 - Rhynds Creek Marsh, Hants County, N.S. Rock bank protection on up-river end of the marsh.

REVIEW OF PROGRESS TO DATE

PROJECTS AND ACREAGES PROTECTED

All projects approved by the Minister and not incorporated into larger projects are designated as active. The number of active projects in each province on March 31, 1966, and the acreages protected are as follows:

Province	No. of Active Projects	Acreage Protected
Nova Scotia	86	44,054
New Brunswick	39	36,936
Prince Edward Island	1	275
TOTAL	126	81,265

Details on the active projects in each province and the acreages protected are listed in Appendix I.

CONSTRUCTION OF WORKS

The protection of marshlands from the tides is normally accomplished by the construction of dykes. Structures, known locally as aboiteaux, are incorporated at major stream crossings where fresh water runoff is to be discharged. River bank control and foreshore protective works are installed where required.

The protecting works include:

250 miles of dyke, 78 miles having rock or timber facing;

437 aboiteaux;

4 major tidal dams;

20 miles of river bank control installations.



(Photo No. N.S. 54/4)

Figure 5 - Minudie Marsh, Cumberland County, N.S. Typical section of new dyke with seeding just completed. Borrow pit to the right.



(Photo No. 24-050)

Figure 6 - Aulac Marsh, Westmorland County, N.B. New dyke being harrowed with special chain harrow, prior to seeding.

A graph showing the annual progress from 1949 to 1966 appears in Appendix III.

The construction trend, directed by economic feasibility studies, has been toward protecting areas in groups, using a single large aboiteau, or dam, instead of miles of dyke and large numbers of small aboiteaux. This has already been done in the cases of the Shepody, Tantramar and Annapolis dams. This trend will in time render obsolete some of the protective works constructed during the current program.

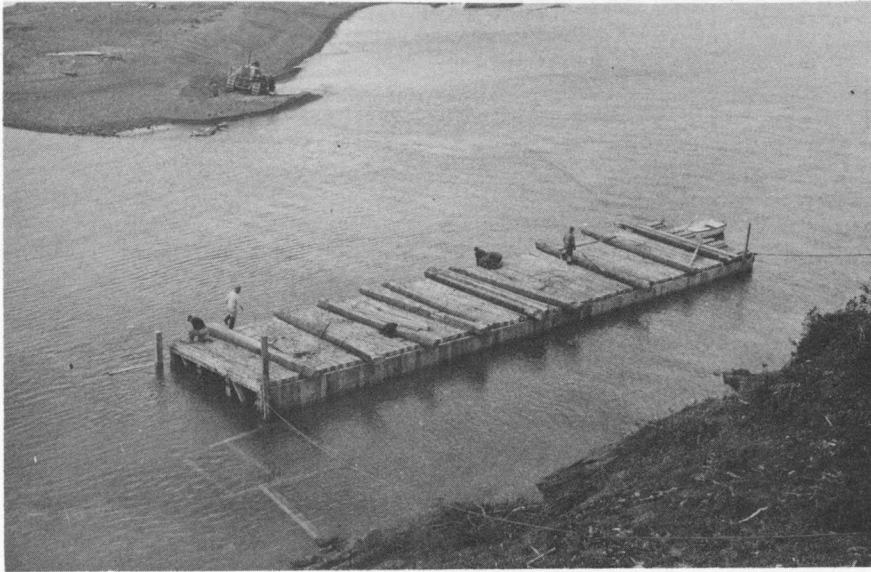
THE CONSTRUCTION PROGRAM FOR 1965-66

Standard Projects

Works previously constructed were improved and extended on projects in Nova Scotia and New Brunswick.

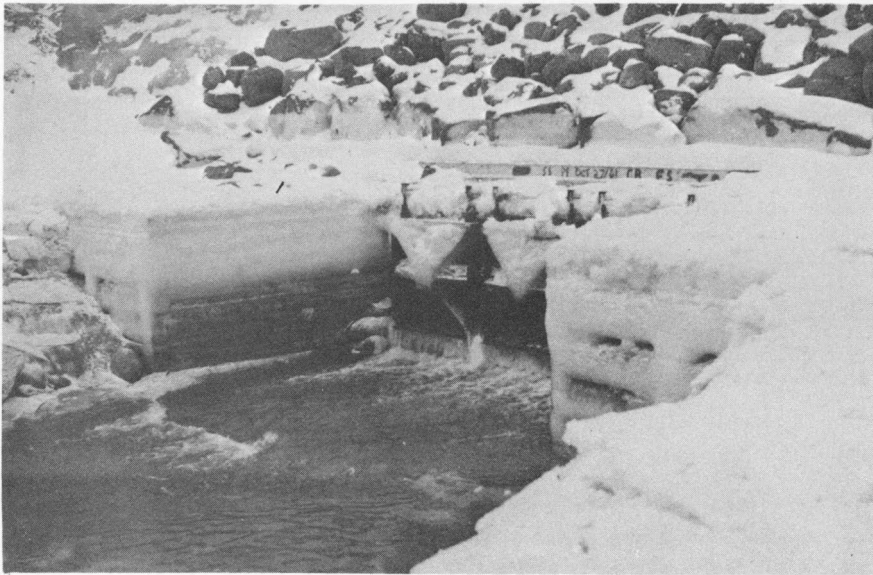
It has been found advantageous to quarry, haul and place required protective rock for most projects during the winter months. This program was successfully continued last winter on the following projects:

N.S.	8	Grand Pré
	12	Victoria Diamond Jubilee
	14	Elderkin
	23	Masstown
	38	St. Croix
	42	Amherst Point
	65	Bishop Beckwith
	67	Onslow-North River
	77	Princeport
	78	Athol
	93	Greenhill
	98	Stewiacke
	100	Wentworth
	103	Annapolis River Dam



(Photo No. 62-038)

Figure 7 - St. Martins Marsh, Saint John County, N.B. Floating a three-barrel sluice into place at high tide.



(Photo No. 62-064)

Figure 8 - St. Martins Marsh, Saint John County, N.B. The sluice shown in Figure 7 during a winter of severe icing conditions.

N.B.	5	Westcock
	6	Taylor Village
	12	Pré d'en Haut
	13	Dorchester
	14	Lower Coverdale
	16	Dixon Island
	21	Memramcook West
	24	Aulac
	27	College Bridge
	37	Sackville
	47	Hillsboro
	51	Shepody River Dam
	58	Memramcook

Details of expenditures to date on all projects are recorded in Appendix II.

Special Projects

The existence of several multipurpose structures, serving as aboiteaux and highway or railway culverts, prompted the careful investigation of possible combined undertakings early in the rehabilitation program. Such investigations have been continued. Among the larger projects being considered are the Avon River Causeway, Hants County, Nova Scotia, in conjunction with the Nova Scotia Department of Highways and the Dominion Atlantic Railway.

During the year, construction was started on a major multipurpose dam on the Petitcodiac River, Westmorland Co., N.B., immediately adjacent to the City of Moncton. This dam will provide both protection for upstream marshlands and a highway crossing.

Investigations for ARDA

The studies and investigations requested by the provinces, principally under the Soil and Water Conservation

program of the Agricultural Rehabilitation and Development Act, have been closely related to the MMRA staff's demonstrated capabilities in the field of fresh water and tidal hydraulic engineering.

At the end of 1964-65 there was a total of 53 projects on which the provinces had requested studies and investigations. During 1965-66 this total was increased by 18 new projects.

The following table lists four general categories into which the various ARDA investigations fall, and the total number of studies requested by the Atlantic Provinces to March 31, 1966. The figures in brackets show the number of studies requested during the year 1965-66.

CATEGORY	N.S.	N.B.	P.E.I.	Nfld.	Total
1. Watershed Study	15(2)	4(2)		1	20(4)
2. Multiple Purpose Dams	14(6)	6(3)	11		31(9)
3. Drainage Projects	7(1)	3			10(1)
4. Flood and Erosion Control	18(6)	9(2)		2	29(8)
	54(15)	22(7)	11	3	90(22)

The general categories include various subclassifications, thus, many of the listed projects fall into two or more general categories. Further details are contained in the listing of "MMRA Studies and Investigations for ARDA Projects" which appears as Appendix IV. General location maps are included in Appendix V.

The status of the 71 ARDA project studies and investigations carried out by the MMRA Staff was as follows at the end of March, 1966:

Nova Scotia

13 projects completed and reports forwarded to the Provincial ARDA Director,
9 projects on which investigation or design was in progress,
7 projects on which action was pending,
12 projects deferred or cancelled at the request of the Nova Scotia Government.

New Brunswick

13 projects completed and reports forwarded to the Provincial ARDA Director,
2 projects on which investigation or design was in progress,
2 projects on which action was pending.

Prince Edward Island

10 projects completed and reports forwarded to the Provincial ARDA Director,
1 project on which investigation or design was in progress.

Newfoundland

2 projects on which action was pending.

APPENDIX I

ACTIVE PROJECTS ON MARCH 31, 1966

Active Projects

Note: Acreages are based on information available on March 31, 1966, and include dyke rights-of-way, roads and creeks.

NOVA SCOTIA

Project No.	Name of Marsh	County	Acreage Protected Marsh
N.S. 2	Windsor Forks	Hants	465
N.S. 3	Falmouth Great Dyke	Hants	975
N.S. 4	Queen Anne	Annapolis	477
N.S. 5	Dugau	Annapolis	172
N.S. 6	Saulnierville	Digby	73
N.S. 8	Grand Pré (inc. Wickwire)	Kings	3,013
N.S. 11	Truro Dykeland Park	Colchester	878
N.S. 12	Victoria Diamond Jubilee	Colchester	527
N.S. 13	Dentiballis	Annapolis	348
N.S. 14	Elderkin	Hants	203
N.S. 15	Isgonish	Colchester	491
N.S. 16	Castle Frederick	Hants	145
N.S. 17	Falmouth Village	Hants	97
N.S. 18	Ryerson	Annapolis	86
N.S. 20	Advocate	Cumberland	489
N.S. 23	Masstown	Colchester	986
N.S. 24	Noel Shore	Hants	309
N.S. 27	Newport Town	Hants	338
N.S. 30	Allan River	Annapolis	122
N.S. 38	St. Croix	Hants	248
N.S. 39	Round	Colchester	86
N.S. 40	Fort Belcher	Colchester	181
N.S. 41	Habitant	Kings	677
N.S. 42	Amherst Point	Cumberland	2,252
N.S. 44	Converse	Cumberland	838
N.S. 45	Barronsfield	Cumberland	237
N.S. 46	River Hebert	Cumberland	1,052
N.S. 47	Selmah	Hants	188
N.S. 48	Centre Burlington	Hants	158
N.S. 49	Scotch Village	Hants	89
N.S. 50	Herbert River	Hants	74
N.S. 52	St. Mary's Bay	Digby	692

NOVA SCOTIA (Continued)

Project No.	Name of Marsh	County	Acreage Protected Marsh
N.S. 53	John Lusby	Cumberland	821
N.S. 54	Minudie	Cumberland	2,711
N.S. 55	Seaman	Cumberland	441
N.S. 56	Wellington	Kings	3,105
N.S. 57	New Minas	Kings	304
N.S. 59	Brown Salt Pond	Yarmouth	294
N.S. 61	Kennetcook	Hants	169
N.S. 63	Maccan	Cumberland	200
N.S. 64	Glenholme	Colchester	292
N.S. 65	Bishop Beckwith	Kings	604
N.S. 66	Flemming	Colchester	277
N.S. 67	Onslow North River	Colchester	496
N.S. 68	Tregothic	Hants	576
N.S. 69	Martock	Hants	1,478
N.S. 70	Chegoggin	Yarmouth	425
N.S. 71	Goose Bay	Yarmouth	269
N.S. 72	Horton	Kings	309
N.S. 75	Armstrong	Hants	53
N.S. 76	Farnham Dyke	Kings	192
N.S. 77	Princeport	Colchester	49
N.S. 78	Athol	Cumberland	131
N.S. 79	Chambers	Hants	61
N.S. 80	Starr's Point	Kings	303
N.S. 81	Lower Truro	Colchester	399
N.S. 82	Kentville	Kings	71
N.S. 85	Mantua Poplar Grove	Hants	362
N.S. 86	Central Onslow	Colchester	291
N.S. 87	Chignecto	Cumberland	544
N.S. 88	Burlington	Hants	106
N.S. 90	Old Barns	Colchester	181
N.S. 91	Belcher Street	Kings	346
N.S. 92	Avonport	Kings	255
N.S. 93	Greenhill	Hants	53
N.S. 95	Fort Lawrence-Amherst	Cumberland	3,400
N.S. 97	Highland Village	Colchester	212
N.S. 98	Stewiacke	Colchester	146
N.S. 100	Wentworth	Hants	150
N.S. 101	Pereaux	Kings	113
N.S. 103	Annapolis River Dam	Annapolis	4,300
N.S. 104	Sunny Slope	Hants	17
N.S. 105	Belmont	Hants	72
N.S. 106	Fort Ellis	Colchester	203
N.S. 108	Argyle	Yarmouth	45
N.S. 109	Nappan River Dam	Cumberland	1,074
N.S. 111	Burntcoat	Hants	37

NOVA SCOTIA (Continued)

Project No.	Name of Marsh	County	Acreage Protected Marsh
N.S. 112	Rhynds Creek	Hants	187
N.S. 113	Southside	Colchester	134
N.S. 114	Great Village	Colchester	-
N.S. 115	Nappan-Maccan	Cumberland	388
N.S. 116	Shubenacadie	Hants	111
N.S. 117	Tufts	Colchester	87
N.S. 119	Upper Maccan	Cumberland	169
N.S. 121	Green's Creek	Colchester	75
N.S. 125	Little River	Yarmouth	-
TOTAL			44,054

NEW BRUNSWICK

Project No.	Name of Marsh	County	Acreage Protected Marsh
N.B. 4	Allison	Westmorland	197
N.B. 5	Westcock	Westmorland	800
N.B. 6	Taylor Village	Westmorland	444
N.B. 8	Coyle Landry	Westmorland	305
N.B. 11	Belliveau Village	Westmorland	191
N.B. 12	Pré d'en Haut	Westmorland	113
N.B. 13	Dorchester	Westmorland	1,758
N.B. 14	Lower Coverdale	Albert	149
N.B. 15	Middle Coverdale	Albert	31
N.B. 16	Dixon Island	Westmorland	330
N.B. 17	New Horton	Albert	799
N.B. 18	Fox Creek	Westmorland	96
N.B. 19	Beaumont	Westmorland	207
N.B. 20	Gautreau Village	Westmorland	209
N.B. 21	Memramcook West	Westmorland	1,105
N.B. 24	Aulac	Westmorland	2,050
N.B. 25	Dock	Westmorland	42
N.B. 26	Dover	Westmorland	43
N.B. 27	College Bridge	Westmorland	873
N.B. 28	Upper Coverdale	Albert	45
N.B. 30	Calkins	Albert	227
N.B. 33	West Coverdale	Albert	260
N.B. 36	Boundary Creek	Westmorland	51
N.B. 37	Sackville	Westmorland	473

NEW BRUNSWICK (Continued)

Project No.	Name of Marsh	County	Acreage Protected Marsh
N.B. 40	Woodpoint	Westmorland	43
N.B. 41	Turtle Creek	Albert	125
N.B. 43	Creek's	Albert	93
N.B. 45	Chartersville	Westmorland	348
N.B. 46	Wilson	Westmorland	157
N.B. 47	Hillsboro	Albert	967
N.B. 50	Black River	Saint John	41
N.B. 51	Shepody River Dam	Albert	5,552
N.B. 54	Jones Creek	Westmorland	51
N.B. 55	Missaguash	Westmorland	333
N.B. 56	Tantramar River Dam	Westmorland	17,988
N.B. 57	Redbank	Westmorland	41
N.B. 58	Memramcook	Westmorland	215
N.B. 60	Petitcodiac River	Westmorland and Albert	-
N.B. 62	St. Martins	Saint John	184
N.B. 63	Petitcodiac River Dam	Westmorland	-
TOTAL			36,936

PRINCE EDWARD ISLAND

Project No.	Name of Marsh	County	Acreage Protected Marsh
P.E.I. 1	Johnston River	Queens	275

APPENDIX II

EXPENDITURES, FISCAL YEARS 1949-65 AND 1965-66

	<u>1949-65</u>	<u>1965-66</u>
Administration	\$ 716,660.72	\$ 43,011.20
Surveys and Engineering	\$2,146,345.74	\$211,012.36
Workshop and Construction Supervision	\$4,109,744.83	\$120,375.15
Construction and Maintenance of Projects and Special Surveys:		
<u>NOVA SCOTIA</u>		
Advocate	\$ 139,894.56	\$ 1,014.11
Allan River	51,341.28	30.00
Amherst Point	181,118.61	12,417.34
Annapolis Royal Town	27,624.41	-
Annapolis River Survey	27,049.60	-
Annapolis River Dam	1,612,847.46	29,618.58
Armstrong Marsh	20,000.96	250.51
Argyle	15,211.98	551.83
Athol	21,813.71	7,883.53
Avonport	116,237.99	212.26
Barronsfield	85,820.84	3,572.63
Bartlett's Beach	2,644.17	-
Belcher Street	123,620.32	2,890.08
Belmont	29,292.89	139.90
Bishop Beckwith	193,046.82	9,175.45
Brown Salt Pond	24,811.41	383.75
Burlington	47,163.75	114.80
Burntcoat	15,064.89	570.42
Castle Frederick	58,591.57	326.56
Central Onslow	49,383.31	4,494.12
Central Burlington	38,015.45	28.69
Chambers	15,957.67	178.50
Chegoggin	32,845.12	475.47
Chignecto	46,997.98	-
Comeau	38,268.06	-
Converse	165,293.83	473.71
Dentiballis	109,703.49	237.54
Dugau	45,977.83	3,406.77
Elderkin	77,761.99	2,811.80
Falmouth Great Dyke	192,927.52	449.87
Falmouth Village	45,981.50	3,392.28
Farnham Dyke	35,499.23	138.85
Flemming	47,922.39	10.00

Construction and Maintenance (Continued):

Fort Belcher	\$ 67,590.27	\$ 435.06
Fort Ellis	49,922.04	20.00
Fox Bow	20,242.73	-
Fort Lawrence - Amherst	85,458.23	2.44
Glenholme	65,825.93	20.00
Goose Bay	29,231.02	50.00
Grand Pré	630,387.76	20,861.54
Granville Centre	27,213.80	-
Great Village		1,932.95
Greenhill	33,351.95	4,432.74
Green's Creek	34,865.29	-
Habitant	22,812.00	75.68
Herbert River	30,581.03	2,684.93
Highland Village	83,903.60	180.65
Horton	110,779.73	656.00
Isgonish	177,900.56	2,035.83
John Lusby	142,641.76	25.61
Kennetcook	51,416.40	5,102.40
Kentville	21,671.17	60.56
Little River	-	-
Lower Truro	63,321.09	206.73
Maccan	40,917.96	-
Mantua, Poplar Grove	91,657.84	1,765.77
Martock	180,400.93	1,432.11
Masstown	210,612.15	16,637.71
McKay	17,165.94	-
Messenger	3,457.06	-
Mill	7,321.94	-
Minudie	151,795.36	10,323.88
Morse	4,616.95	-
Morse Bishop	3,173.26	-
Moschelle	28,719.68	-
Mount Anne	60,302.71	-
Nappan-Maccan	27,015.87	268.22
Nappan River Dam	177,115.42	-
New Minas	101,348.88	7,590.14
Newport Town	79,583.66	4,212.39
Noel Shore	193,770.68	266.76
Old Barns	55,201.30	112.42
Onslow North River	79,659.78	4,275.12
Pré Rond	9,014.96	-
Pereaux	22,581.96	27.68
Princeport	17,761.45	3,102.19
Queen Anne	185,744.93	9,254.97
Rhynds Creek	55,015.94	324.15
Ricketson	2,519.54	-
River Hebert	259,671.09	3,887.55
Rosette	2,977.37	-
Round	39,829.16	2,701.96
Ryerson	58,440.66	2,653.37

Construction and Maintenance (Continued):

Saulnierville	\$ 8,755.95	\$ 63.51
Scotch Village	30,755.92	57.40
Seaman	45,653.33	356.68
Selmah	27,902.29	423.68
Shipley	4,609.00	-
Shubenacadie	24,201.90	-
Southside	32,099.13	252.35
Starr's Point	123,289.12	342.95
St. Croix	103,427.47	11,772.86
St. Mary's Bay	114,957.19	2,695.23
Stewiacke	42,245.23	2,616.88
Sunny Slope	11,240.45	57.40
Tregothic	59,409.91	1,352.92
Truro Dykeland Park	127,348.91	777.86
Tufts	22,184.74	27.80
Tupperville	18,608.25	-
Upper Belleisle	32,091.75	-
Upper Nappan	54,929.55	-
Upper Maccan	28,863.22	350.83
Victoria Diamond Jubilee	100,318.36	10,994.04
Walker	5,210.13	-
Wellington	109,251.82	8,238.55
Wentworth	20,314.61	9,873.61
Windermere	49,026.18	-
Windsor Forks	84,579.07	491.54
Woodworth	23,487.11	-
Subtotal - Nova Scotia Projects	\$8,957,003.97	\$243,614.95

NEW BRUNSWICK

Allison	\$ 29,689.61	\$ 155.71
Aulac	311,269.41	11,354.54
Baie Verte	923.03	-
Beaumont	84,199.13	757.78
Belliveau Village	27,824.13	32.10
Black River	16,358.16	78.91
Boundary Creek	4,990.47	-
Calkins	114,407.97	1,362.12
Chartersville	63,946.35	236.51
Cole's Island	52,094.47	-
College Bridge	129,827.18	21,486.58
Coverdale	19.31	-
Coyle Landry	50,408.95	1,536.28
Creeks	12,106.04	-
Dixons Island	90,649.87	6,417.99
Dock	20,339.76	50.70
Dorchester	298,872.87	3,901.34
Dover	17,120.37	2,405.24

Construction and Maintenance (Continued):

Fox Creek	\$ 40,746.65	\$ 310.80
Gautreau Village	113,575.62	3,456.55
Great	6,828.22	-
Germantown	11,909.61	-
Hillsboro	174,454.32	12,273.27
Hopewell Hill	72,406.13	-
Jones	4,803.31	-
Jones Creek	7,845.79	-
Log Lake	52,004.10	-
Lower Coverdale	63,304.26	16,149.19
Memramcook	54,573.63	4,349.01
Memramcook West	199,942.63	8,999.75
Middle Coverdale	19,941.53	-
Missaguash	11,534.63	-
New Horton	103,305.31	8,456.90
Petitcodiac River Dam		5,380.84
Pré d'en Haut	55,575.75	5,709.76
Red Bank	5,060.41	78.91
Sackville	64,029.54	9,517.70
Shepody River Dam	1,589,071.47	17,574.38
Shepody River Survey	26,334.47	-
St. Martin's	51,410.63	401.78
Tantramar River Dam	775,996.62	6,508.93
Tantramar River Survey	23,201.48	-
Tantramar West	45,616.39	-
Taylor Village	104,990.83	8,166.71
Turtle Creek	27,220.00	202.51
Upper Coverdale	20,088.97	49.35
Upper Dyke	11,149.33	-
Westcock	186,474.12	15,056.55
West Coverdale	82,586.75	39.46
Wilson	31,243.53	271.02
Wood Point	2,617.95	-
Subtotal - New Brunswick Projects	\$5,364,891.06	\$172,729.17

PRINCE EDWARD ISLAND

Johnston River	\$ 20,150.40	-
TOTAL EXPENDITURE - CONSTRUCTION AND MAINTENANCE OF PROJECTS AND SPECIAL SURVEYS	\$14,342,045.43	\$416,344.12
TOTAL EXPENDITURE - ADMINISTRATION, ENGINEERING, AND SUPERVISION	\$ 6,972,751.29	\$374,398.71
TOTAL	\$21,314,796.72	\$790,742.83

APPENDIX III

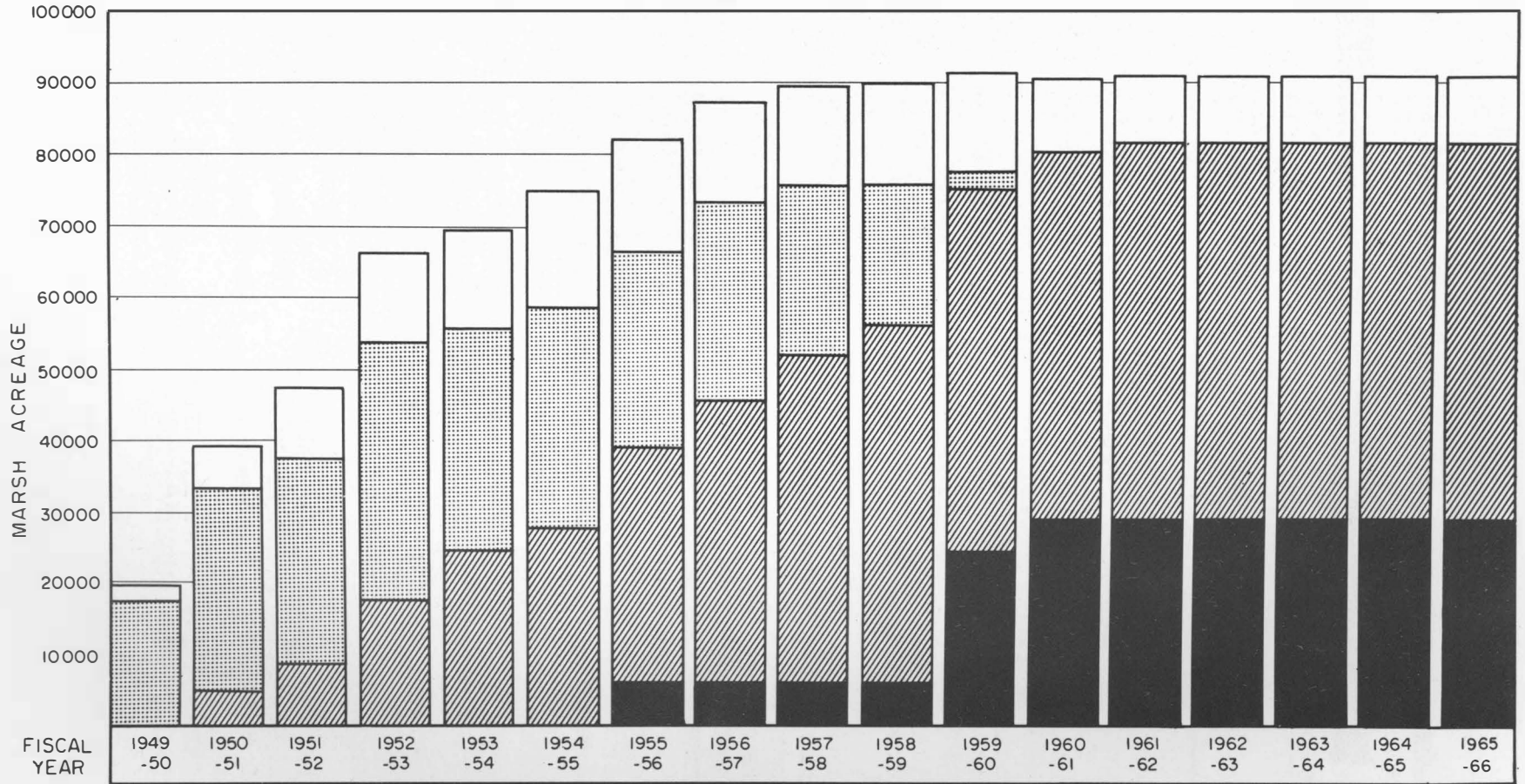
MMRA

SHOWING AREA INCORPORATED AND AREA PROTECTED

Nova Scotia - New Brunswick - P.E.I.

Year 1949 - 50 to 1965 - 66

21



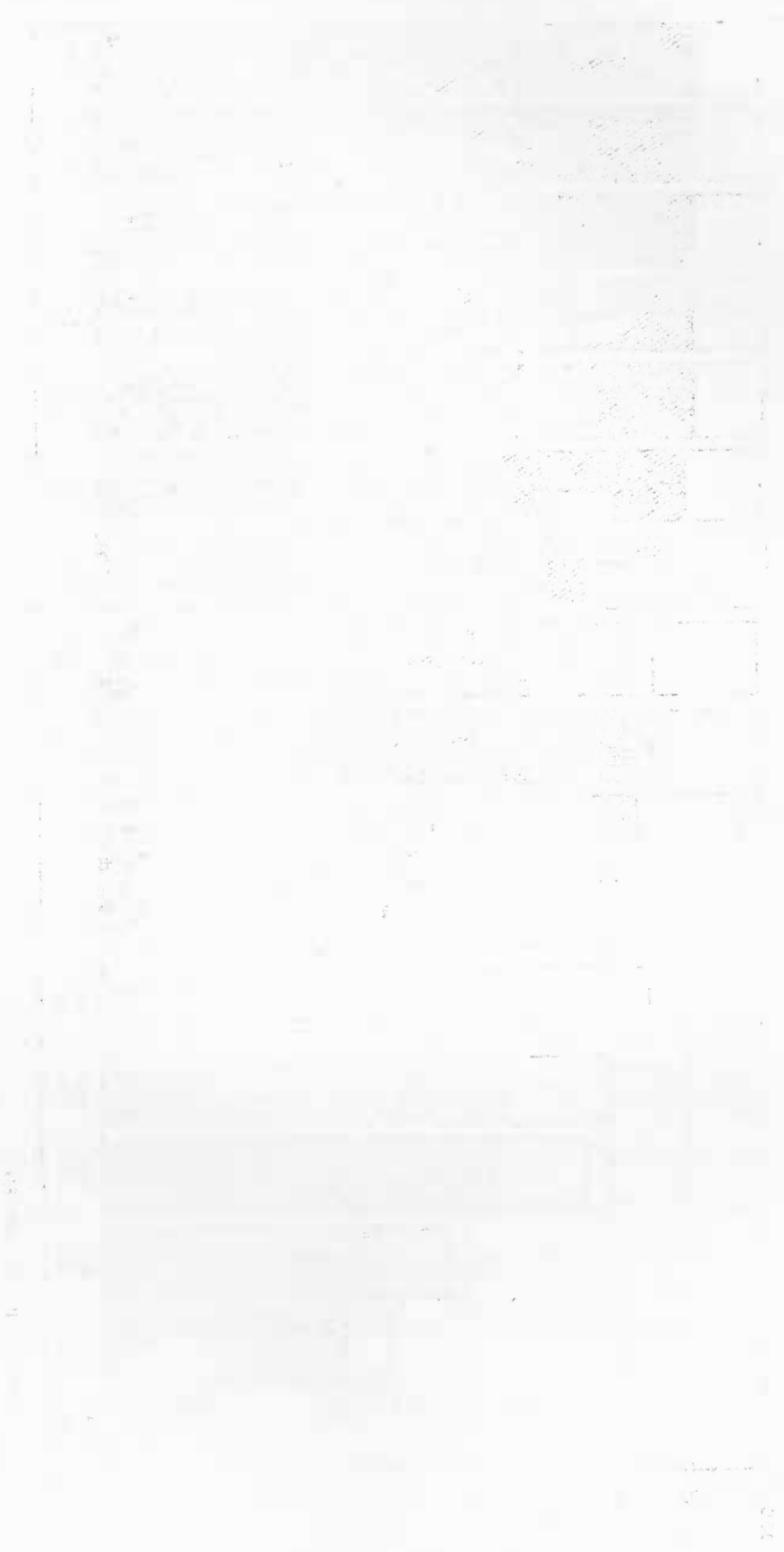
□ - ACREAGE INCORPORATED.

▤ - ACREAGE PROTECTED BY ALL CLASSES OF PROTECTIVE WORKS INCLUDING MINIMUM MAINTENANCE OF EXISTING STRUCTURES.

■ - ACREAGE PROTECTED BY MAJOR TIDAL DAMS (SHEPODY, TANTRAMAR, NAPPAN, ANNAPOLIS RIVER DAM)

▨ - ACREAGE PROTECTED BY STANDARD MMRA PROTECTIVE WORKS.

THE UNIVERSITY OF CHICAGO
DEPARTMENT OF CHEMISTRY
505 EAST 57TH STREET
CHICAGO, ILLINOIS 60637



RECEIVED
JAN 15 1963
UNIVERSITY OF CHICAGO
LIBRARY

APPENDIX IV

MMRA STUDIES AND INVESTIGATIONS FOR ARDA PROJECTS

NOVA SCOTIA		March 31, 1966		
MMRA Project No.	Name of Project	County	*Project Category	ARDA Project No.
ARDA	1-N.S. Condon Lake	Kings	2	
ARDA	2-N.S. Aylesford Bog	Kings	3	
ARDA	3-N.S. Pleasant River	Queens	3	
ARDA	4-N.S. Musquodoboit River	Halifax	1, 4	3059
ARDA	5-N.S. Dewey Creek	Kings	2	3020
ARDA	6-N.S. West Brook	Cumberland	3	
ARDA	7-N.S. Stewiacke River	Colchester	1, 4	3025 3026
ARDA	8-N.S. Salmon & North Rivers	Colchester	1	
ARDA	9-N.S. East River St. Mary's	Guysborough	1, 4	
ARDA	10-N.S. West River St. Mary's	Guysborough	1, 4	
ARDA	11-N.S. Margaree River	Inverness	1, 4	3026
ARDA	12-N.S. Shubenacadie River	Colchester	1, 2, 4	
ARDA	13-N.S. Middle River	Victoria	1	
ARDA	14-N.S. Guysborough	Guysborough	1	
ARDA	15-N.S. Baddeck River	Victoria	1	
ARDA	16-N.S. Cornwallis River	Kings	2, 4	
ARDA	17-N.S. Annapolis River	Annapolis	3	
ARDA	18-N.S. Gold River	Lunenburg	1	
ARDA	19-N.S. Beaver Meadow	Antigonish	3	
ARDA	20-N.S. Parrsboro Dam	Cumberland	2	3056
ARDA	21-N.S. East River- Sheet Harbour	Halifax	2	

*For Project Categories see page 26.

NOVA SCOTIA (Continued)

MMRA Project No.	Name of Project	County	*Project Category	ARDA Project No.
ARDA 22-N.S.	Scotsburn Marsh	Pictou	3	
ARDA 23-N.S.	Middle River	Pictou	2, 4	
ARDA 24-N.S.	North River	Victoria	4	
ARDA 25-N.S.	River Philip	Cumberland	1, 4	
ARDA 26-N.S.	Halfway River	Cumberland	4	
ARDA 27-N.S.	Medway River	Annapolis & Queens	1, 4	
ARDA 28-N.S.	Pictou Harbour Causeway	Pictou	2	
ARDA 29-N.S.	Sydney Harbour Causeway	Cape Breton	2	
ARDA 30-N.S.	Annapolis Valley Pheasant Preserve	Kings	2	
ARDA 31-N.S.	Centre Falmouth Cemetery	Hants	4	
ARDA 32-N.S.	French Mill Brook	Hants	2	
ARDA 33-N.S.	Beaver Lake to Sea	Yarmouth	3	
ARDA 34-N.S.	River Diversion 1. Rights River 2. West River	Antigonish	4	
ARDA 35-N.S.	McLellan's Pond	Cumberland	2	
ARDA 36-N.S.	East River	Pictou	4	
ARDA 37-N.S.	(S.P.) Jordan River	Shelburne	1	
ARDA 38-N.S.	Gudgeon Brook Dam	Hants	2	
ARDA 39-N.S.	Saulnierville Pond	Digby	2	
ARDA 40-N.S.	Erosion Control- South River	Antigonish	4	
ARDA 41-N.S.	LaHave River Water Control	Lunenburg	1, 4	

*For Project Categories see page 26.

NEW BRUNSWICK

MMRA Project No.	Name of Project	County	*Project Category	ARDA Project No.
ARDA	1-N.B. Maugerville- Sheffield Interval Survey	Queens- Sunbury	3, 4	
ARDA	2-N.B. St. Charles Peat Bog Survey	Kent	3	
ARDA	3-N.B. North Shore R.D.A.	Gloucester		
ARDA	4-N.B. Eel River	Restigouche	2	
ARDA	5-N.B. Kennebecasis River Valley Survey	Kings	1, 4	4024
ARDA	6-N.B. Upper Tantramar Region Develop- ment Study	Westmorland	3	4029
ARDA	7-N.B. Tobique River Study	Victoria	1, 4	
ARDA	8-N.B. Oromocto River, South Branch	Sunbury	4	
ARDA	9-N.B. Coverdale River	Albert	4	
ARDA	10-N.B. Dupuis Pond	Kent	2	
ARDA	11-N.B. St. Norbert	Kent	2	
ARDA	12-N.B. Hammond River	Kings	4	4024
ARDA	13-N.B. Keswick Island	York	4	
ARDA	14-N.B. Nashwaaksis River	York	4	
ARDA	15-N.B. Nashwaak River	York	4	
ARDA	16-N.B. LeBlanc's Dam	Westmorland	2	
ARDA	17-N.B. Warrens Dam	Kent	2	
ARDA	18-N.B. (S.P.) Skiff Lake Dam	York	2	

*For Project Categories see page 26.

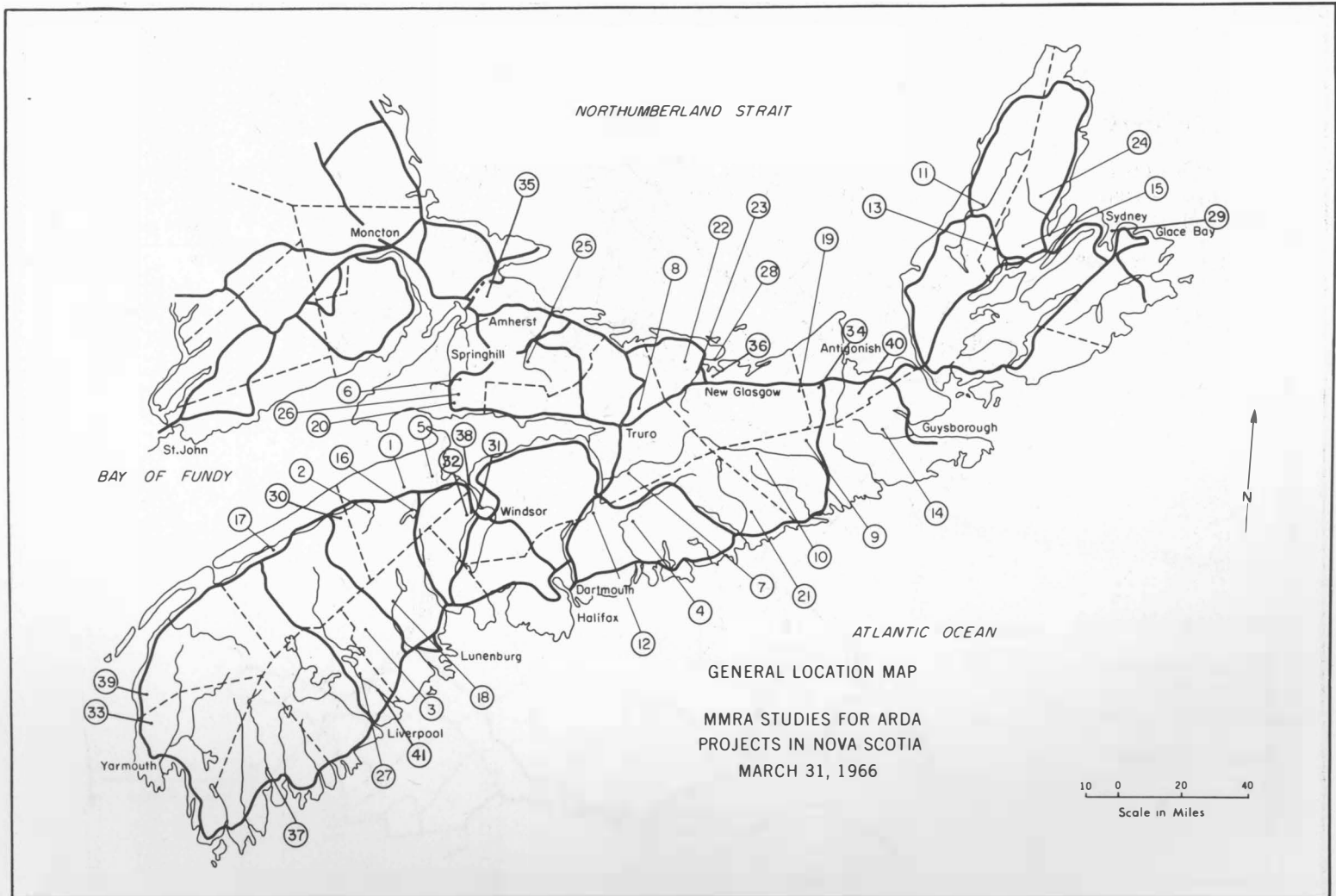
PRINCE EDWARD ISLAND

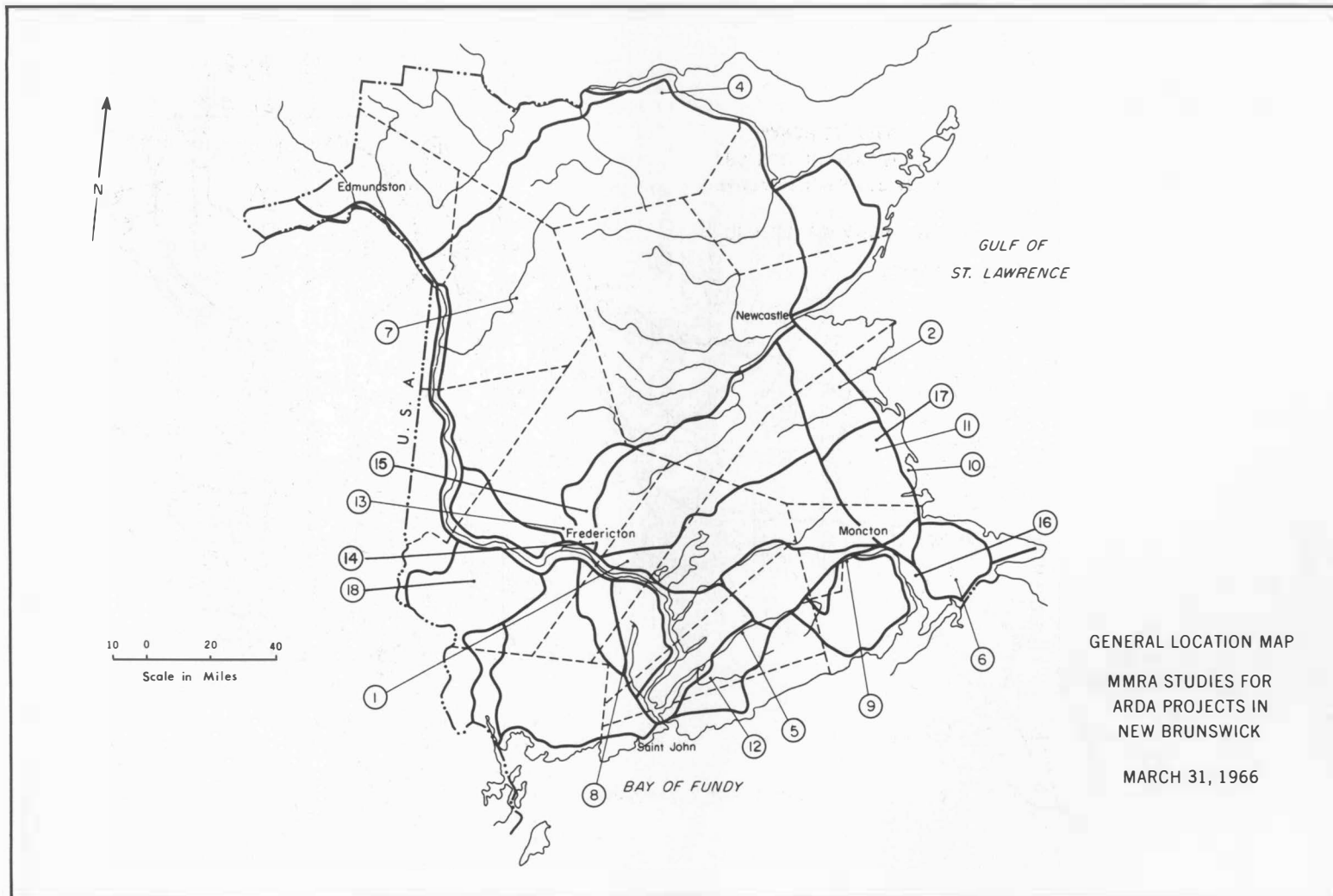
MMRA Project No.	Name of Project	County	*Project Category	ARDA Project No.
ARDA 1-P.E.I.	Barlow's Dam (Wellington)	Prince	2	2031
ARDA 2-P.E.I.	Sutherland's Dam (Montague)	Kings	2	
ARDA 3-P.E.I.	Stewart's Dam (Vernon River)	Queens	2	21033
ARDA 4-P.E.I.	Paynter's Dam (Long River)	Queens	2	21033 (2019)
ARDA 5-P.E.I.	Quigley's Dam (St. Peter's Bay)	Kings	2	2038
ARDA 6-P.E.I.	Robinson's Dam Tyne Valley)	Prince	2	
ARDA 7-P.E.I.	Indian River	Prince	2	2040
ARDA 8-P.E.I.	St. Peter's Bay	Kings	2	
ARDA 9-P.E.I.	MacMillans Dam (Covehead River)	Queens	2	21007 (2042)
ARDA 10-P.E.I.	Blanchard's Dam	Prince	2	2020
ARDA 11-P.E.I.	Arsenault's Dam	Prince	2	21028 (2021)

NEWFOUNDLAND

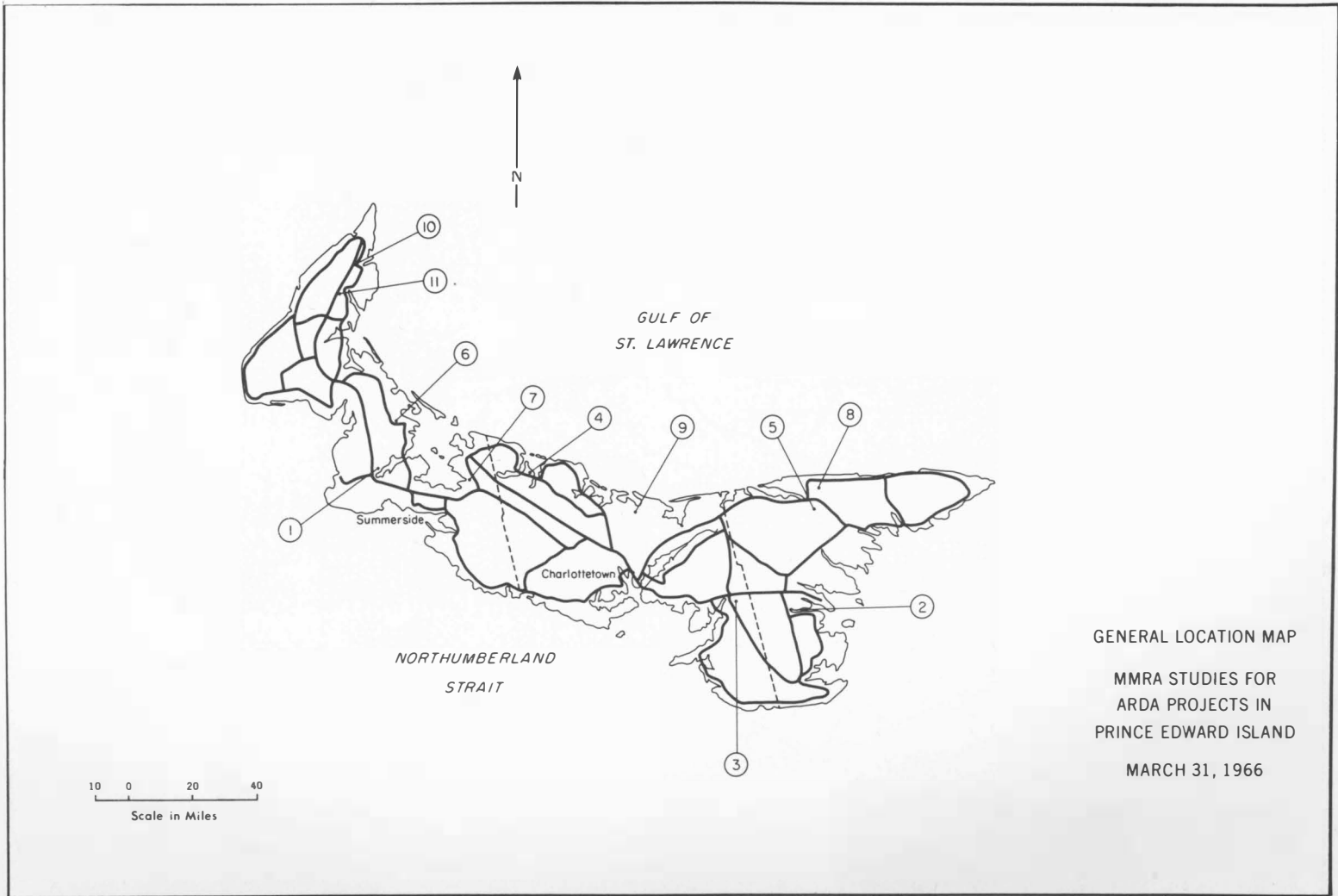
MMRA Project No.	Name of Project	County	*Project Category	ARDA Project No.
ARDA 1-Nfld.	Soil & Water Conservation	St. George- Port Au Port District	1, 4	
ARDA 2-Nfld.	Bay Bulls Road	St. John's South District	4	

*Project Categories: 1-Watershed Study
 2-Multiple-Purpose Dam
 3-Drainage Project
 4-Flood and Erosion Control





GENERAL LOCATION MAP
MMRA STUDIES FOR
ARDA PROJECTS IN
NEW BRUNSWICK
MARCH 31, 1966



GENERAL LOCATION MAP

MMRA STUDIES FOR
ARDA PROJECTS IN
PRINCE EDWARD ISLAND

MARCH 31, 1966