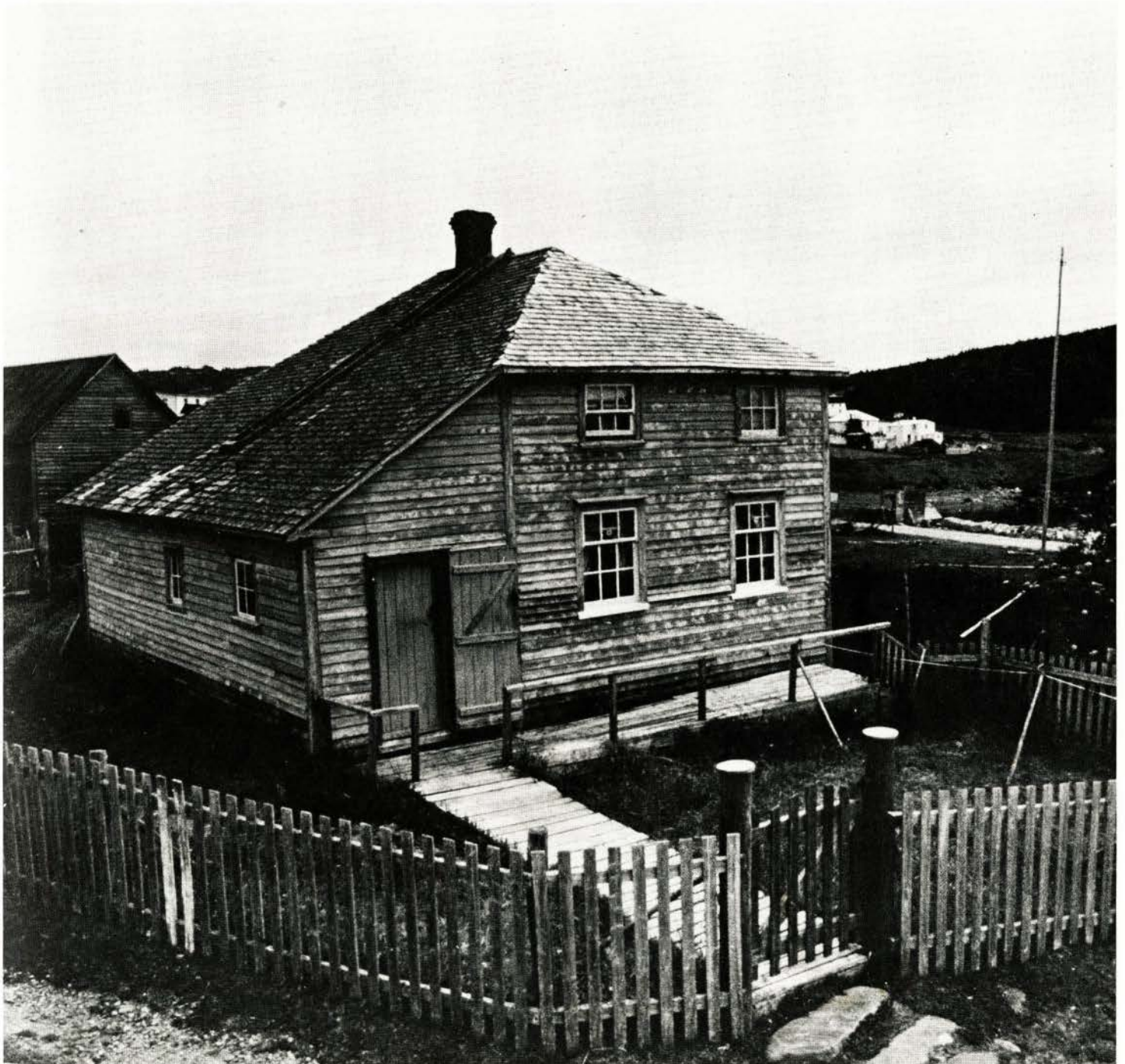

SOCIETY FOR THE STUDY OF ARCHITECTURE IN CANADA

BULLETIN

SOCIÉTÉ POUR L'ÉTUDE DE L'ARCHITECTURE AU CANADA



MESSAGE FROM THE PRESIDENT

This issue of the *Bulletin* celebrates the holding of the SSAC annual meeting in St. John's, Newfoundland. This meeting breaks new ground for us: it is the first time that we have met in Newfoundland and the meeting format for the first time integrates a two day field trip into the programme so as to provide a wide exposure to the rich architectural heritage of the province.

Next year, in keeping with our recent practice of holding our annual meeting in conjunction with the Learned Societies Conference on alternate years, we will meet with the "Learneds" in Guelph, Ontario, in late May — early June, 1984. The location of the meeting is established but the themes around which paper sessions may be structured are yet to be determined.

If you have any particular interests within the field of architecture which you feel need wider discussion than the SSAC annual meeting can provide a suitable forum to bring together those with similar interests. To do this effectively we need your input, so give me your suggestions for the themes of paper sessions, or consider convening and chairing a special session yourself.

While we are organizing the Guelph meeting the SSAC board will be considering where to hold the 1985

meeting. In selecting the venues for our meetings we have attempted to provide a broad regional representation. We have met in Edmonton (1975), Quebec City (1976), Fredericton (1977), London (1978), Saskatoon (1979), Montreal (1980), Victoria (1981), Ottawa (1982), and, this year, St. John's. Winnipeg has been suggested as a possible venue but other ideas as to the location of the 1985 meeting are most welcome, doubly so if accompanied by offers of help in organizing the meeting at the suggested locale!

I hope to be receiving your ideas in the near future. My address is given below.

Sincerely,
John C. Lehr
President
(Department of Geography
University of Winnipeg
515 Portage Avenue
Winnipeg, Manitoba
R3B 2E9
Phone (204) 786-7811)

Editor's Desk

This extra-size issue of the *Bulletin* concentrates on the upcoming conference to be held in St. John's, Newfoundland, July 27-30, 1983. The papers by Professors Shane O'Dea and Gerald Pocius provide an historical overview for the development of architectural form in Newfoundland. As these essays will undoubtedly spark a new interest in this area for some readers a bibliography of related material is included. Those attending the conference will find the tentative schedule, on page 3, of particular interest. The Conception Bay Tour was limited to 45 participants and although this number has been reached a waiting list is in effect.

This issue also features the regular book review section; of particular note is a critique submitted by Steve Otto, Toronto, regarding the John M. Lyle (1872-1945) exhibition and catalogue by Geoffry Hunt. A new addition entitled Bibliographical Notes on SSAC Directors is aimed at acquainting members with their provincial representatives. Members at large for the SSAC Board are elected annually and normally hold a two-year post. George Kapelos, Chairman of the SSAC Nominating Committee advises that nominations are now open for members at large for the 1983-85 term. Anyone with an

interest in serving on the Board should contact George at 176 Palmerston Ave., Toronto, M6J 2J4.

While discussing board members one cannot neglect to mention an outstanding act of dedication and service to the Society by two directors this spring. Congratulations and best wishes are extended to the new architectural coalition team of Dorothy Ahlgren and Douglas Franklin who were married in Victoria on April 8, 1983. They started off their partnership in true form by conducting an architectural tour of England and southern Europe.

On another happy note, the secretary has reported that membership has risen significantly. The next *Bulletin* is scheduled for September and material for publication should be sent by the end of July.

All the best.

Don W. Lovell

SUBSCRIPTIONS

Subscription to the *Bulletin* is included upon payment of membership dues to the SSAC. Dues are \$10.00 student, \$20.00 individual, and \$30.00 corporation. Further details available from Membership Secretary, Box 2935, Station 'D', Ottawa, Ontario K1P 5W9.

COVER:

There appears to be a correlation in Newfoundland architecture between chimney placement and roof form (page 9).