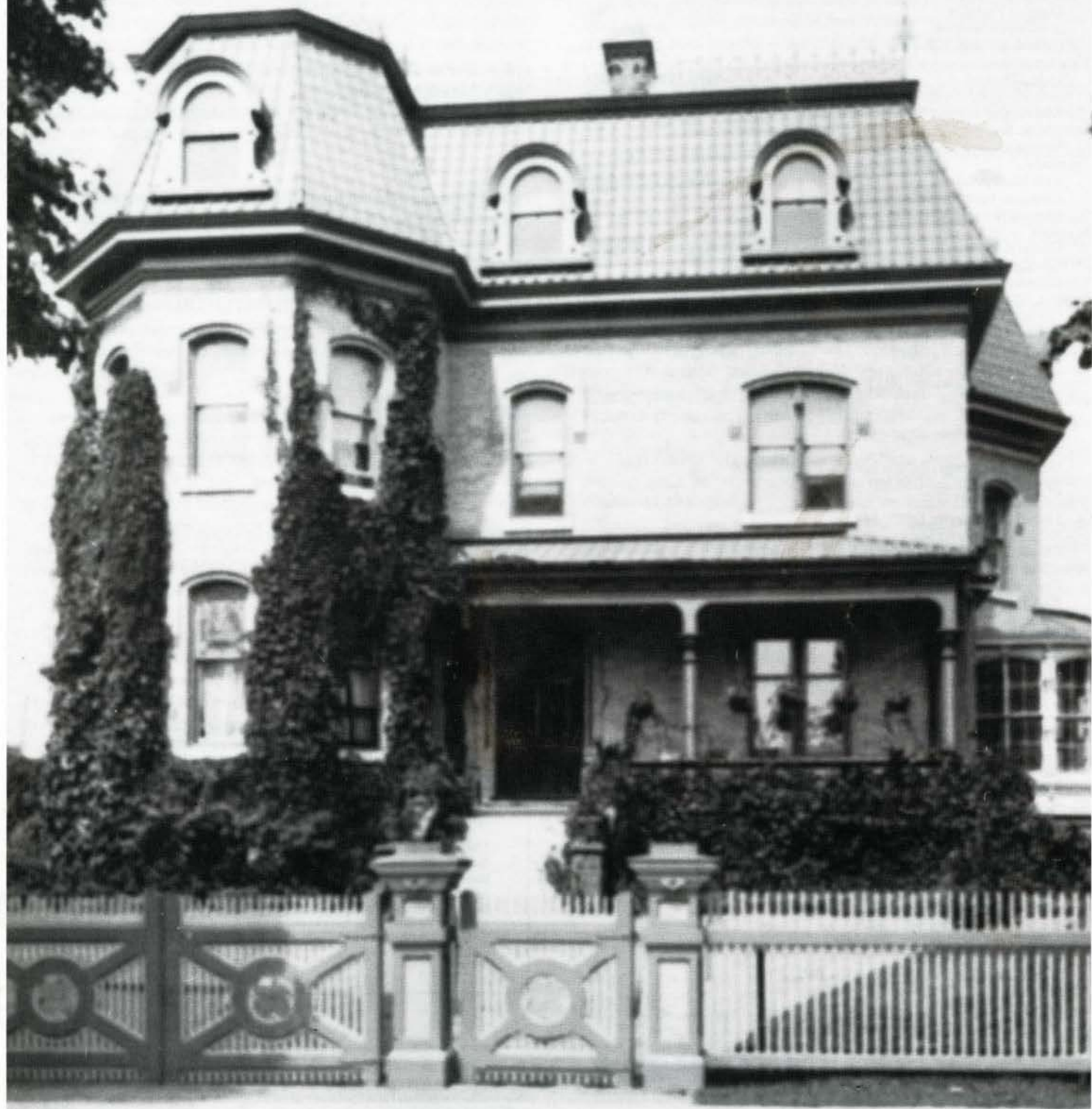


# BULLETIN



# Society for the Study of Architecture in Canada

# BULLETIN

Volume/Tome 15, Number/Numéro 4

<b>President</b> Mark Fram 221 Russell Hill Road, No. 302 Toronto, Ontario M4V 2T3	res. (416) 961-9956
<b>Past President</b> Douglas Franklin 30 Renfrew Avenue Ottawa, Ontario K1S 1Z5	office (613) 237-1867 res. 236-5395
<b>Vice-President</b> Diana Thomas Historic Sites Service Alberta Culture and Multiculturalism Old St. Stephen's College, 8820 112 Street Edmonton, Alberta T6G 2P8	office (403) 431-2343 res. 466-9742
<b>Treasurer</b> Kate MacFarlane Canadian Parks Service Ottawa, Ontario K1A 0H3	office (819) 953-4598
<b>Secretary</b> Shannon Ricketts Canadian Parks Service Ottawa, Ontario K1A 0H3	office (819) 953-4611
<b>Bulletin Editor</b> Gordon Fulton 76 Lewis Street Ottawa, Ontario K2P 0S6	office (819) 997-6966
<b>Members-at-large (east to west)</b> <b>Philip Pratt</b> P.O. Box 5862 St. John's, Newfoundland A1C 5X3	office (709) 726-8612
<b>Jim St. Clair</b> University College of Cape Breton, P.O. Box 5300 Sydney, Nova Scotia B1P 6L2	
<b>Dr. C. W. Eliot</b> University of Prince Edward Island 550 University Avenue Charlottetown, Prince Edward Island C1A 4P3	office (902) 566-0400
<b>Allen Doiron</b> Provincial Archives P.O. Box 6000 Fredericton, New Brunswick E3B 5H1	
<b>Howard Shubert</b> Canadian Centre for Architecture 1920, rue Baile Montréal, Québec H3H 2S6	office (514) 939-7000 res. 485-1542
<b>Anne M. de Fort-Menares</b> 100 Quebec Avenue, Ste 608 Toronto, Ontario M6P 4B8	res. (416) 769-6862
<b>Philip N. Haese</b> 785 Pasadena Avenue Winnipeg, Manitoba R2T 2T6	
<b>Terry Sinclair</b> 3111 Retallack Street Regina, Saskatchewan S4S 1T5	
<b>Dorothy Field</b> Historic Sites Service Alberta Culture and Multiculturalism Old St. Stephen's College, 8820 112 Street Edmonton, Alberta T6G 2P8	office (403) 432-1376
<b>Jeannette Hlavach</b> 2725 West 6th Avenue Vancouver, British Columbia V6K 1W9	
<b>Ann Peters</b> Box 2303 Yellowknife, Northwest Territories X1A 2P7	

A Note from the Editor/Note du rédacteur  
by Gordon Fulton ..... 87

Mies van der Rohe's Esso Service Station on  
Nun's Island, Montreal  
by Phyllis Cohos-Newman ..... 88

Pierre Dionne, Architect: Valleyfield's First Modern  
by David Rose ..... 90

Munross and Le Cercle Universitaire d'Ottawa  
by Beryl Corber ..... 100

Architecture in Transition: From Art to  
Practice, 1885-1906  
Book Review by Douglas Franklin ..... 108

Connolly, Pugin, and the Gothic in Ontario  
Letter by Jackie Adell ..... 110

Membership fees are payable at the following rates: Student, \$10.00; Individual/Family, \$25.00; Organization/Corporation/Institution, \$40.00; Patron, \$20.00 (plus a donation of not less than \$100.00). There is a surcharge of \$5.00 for all foreign memberships. Contributions over and above membership fees are welcome, and are tax-deductible. Please make your cheque or money order payable to the SSAC and send to Box 2302, Station D, Ottawa, Ontario K1P 5W5.

L'abonnement annuel est payable aux prix suivantes : étudiant, 10,00 \$; individuel/famille, 25,00 \$; organisation/société/institut, 40,00 \$; bienfaiteur, 20,00 \$ (plus un don d'au moins 100,00 \$). Il y a des frais additionnels de 5,00 \$ pour les abonnements étrangers. Les contributions au-dessus de l'abonnement annuel sont acceptées et déductibles d'impôt. Veuillez s.v.p. faire le chèque ou mandat poste payable à l'ordre de SEAC et l'envoyer à la Case postale 2302, succursale D, Ottawa (Ontario) K1P 5W5.

ISSN No. 0228-0744

Produced with the assistance of the Social Sciences and Humanities Research Council  
COVER: Front elevation of "Munross," 453 Laurier Avenue East, Ottawa, in 1903.  
(National Archives of Canada PA 42469) See page 102.

The Society for the Study of Architecture in Canada is a learned society devoted to the examination of the role of the built environment in Canadian society. Its membership includes structural and landscape architects, architectural historians, urban historians and planners, sociologists, folklorists, and specialists in such fields as heritage conservation and landscape history. Founded in 1974, the Society is currently the sole national society whose focus of interest is Canada's built environment in all of its manifestations.