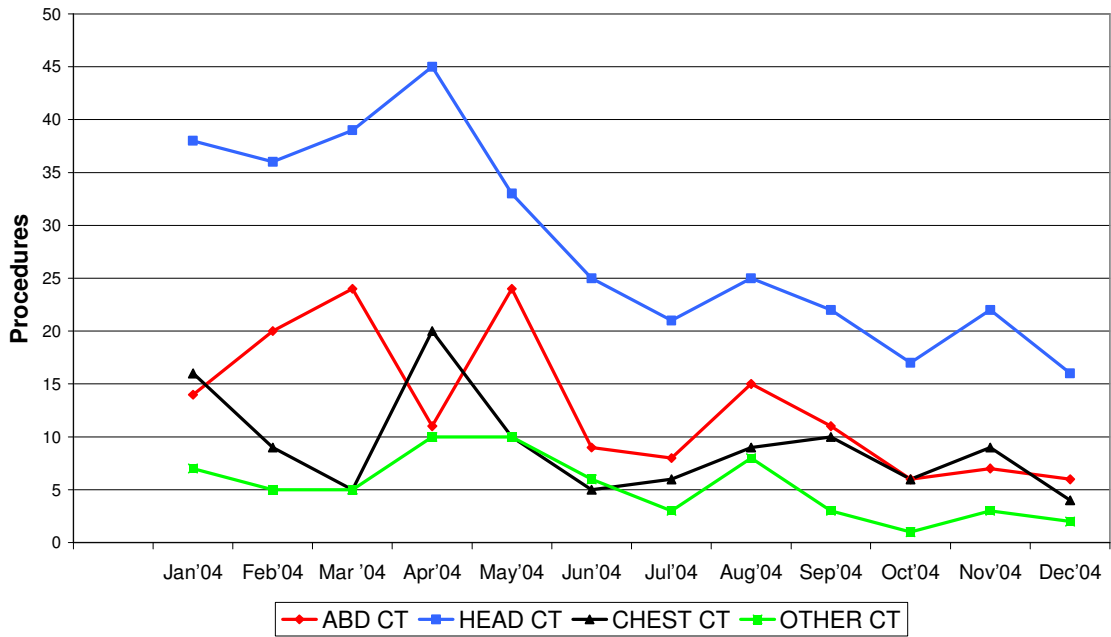
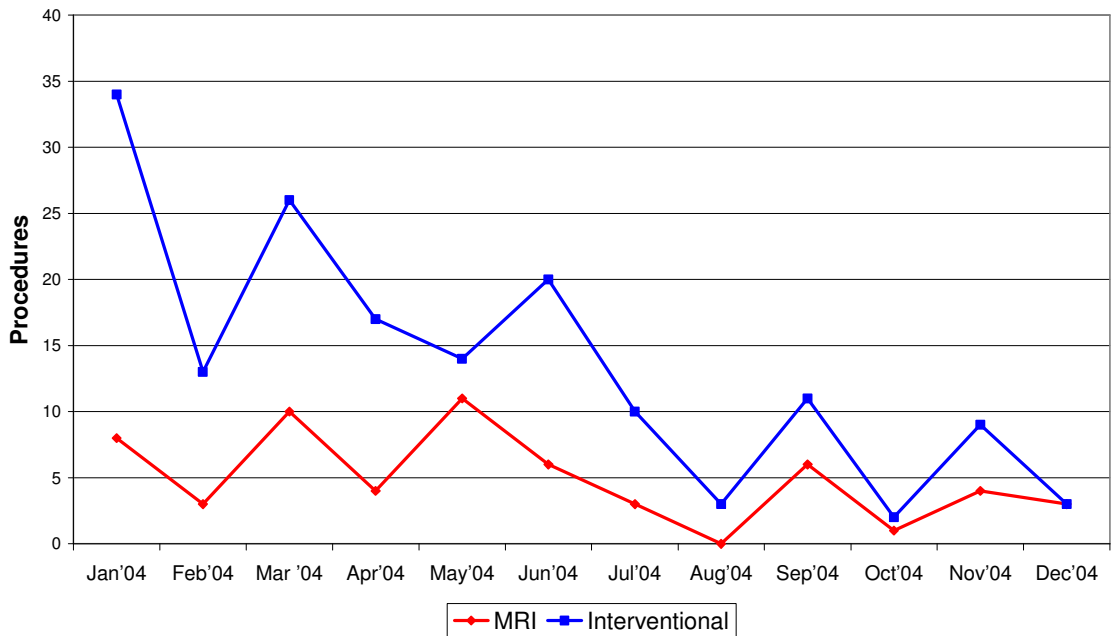


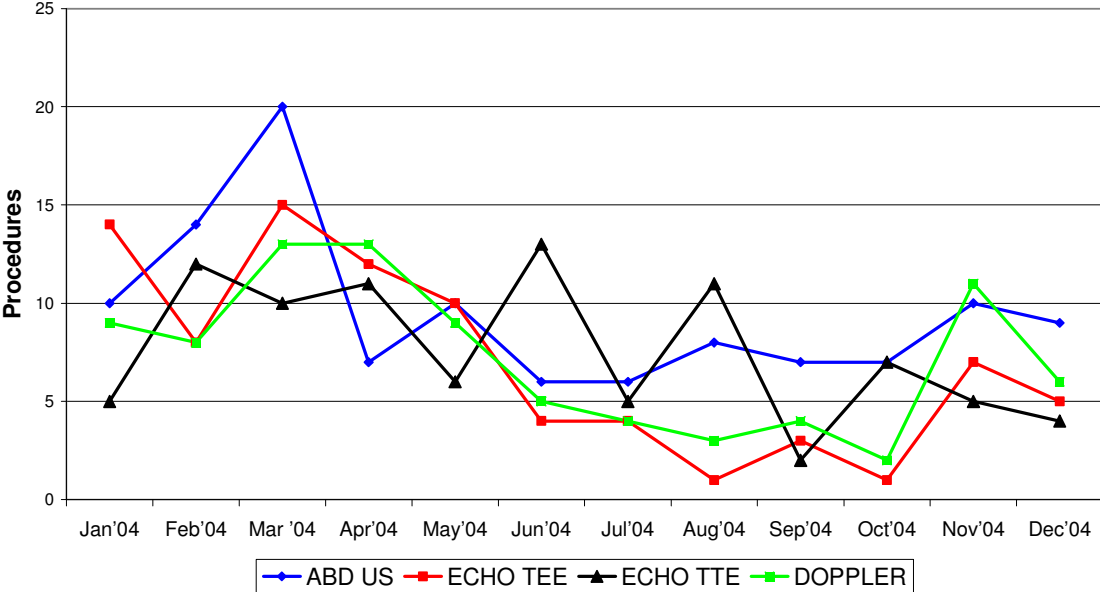
Radiology - CT Scans - 2004 3A & 5.2



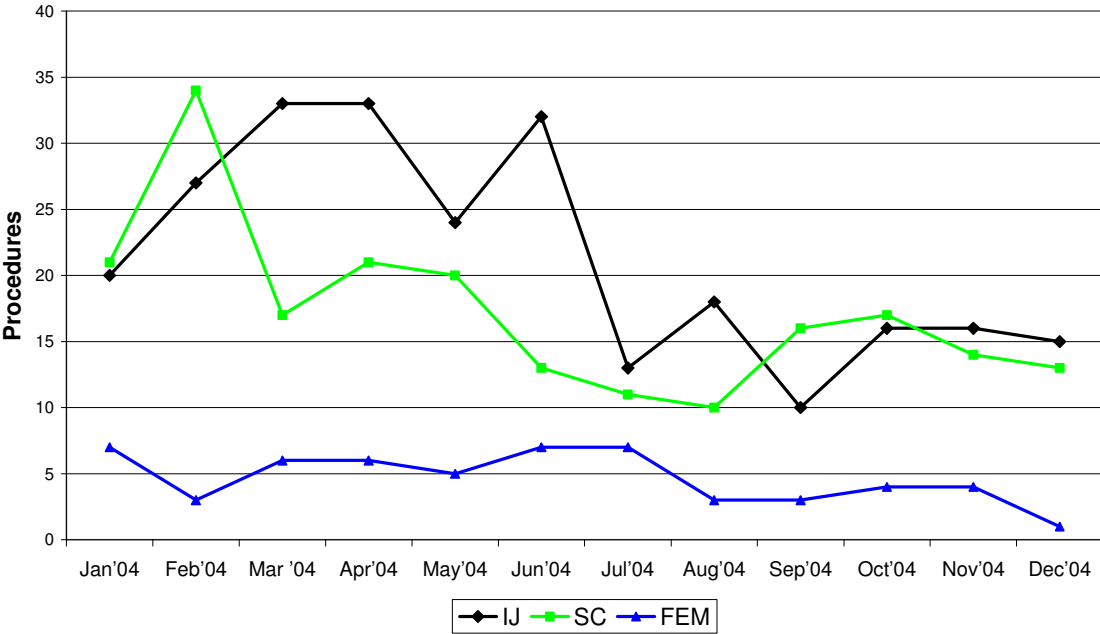
Radiology - MRI & Interventional 2004 3A & 5.2



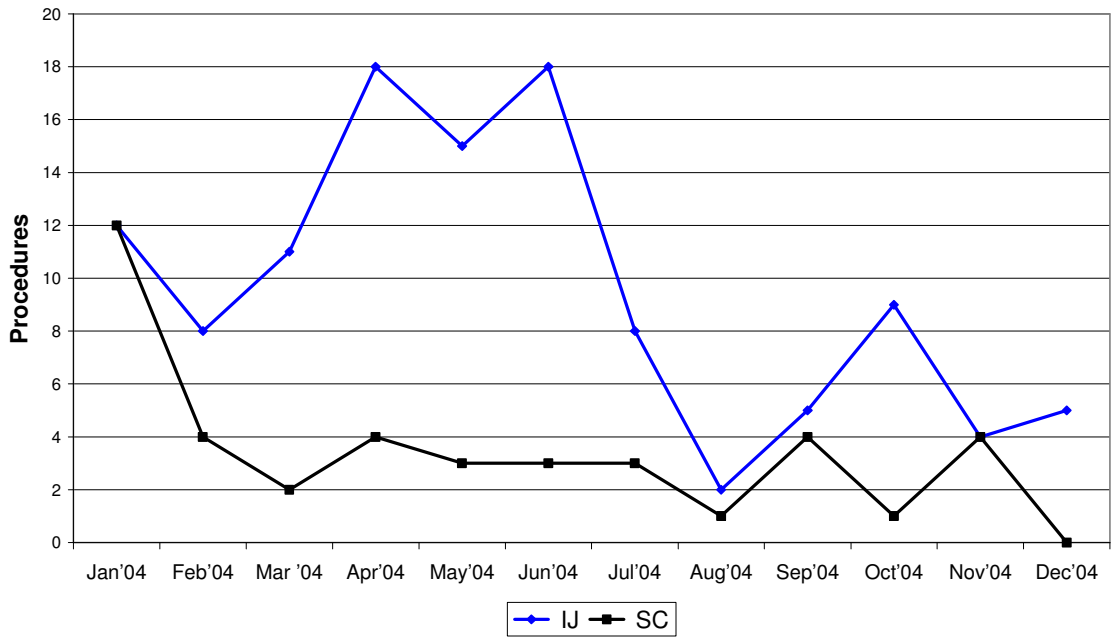
**Radiology - U/S, ECHO, Doppler 2004
3A & 5.2**



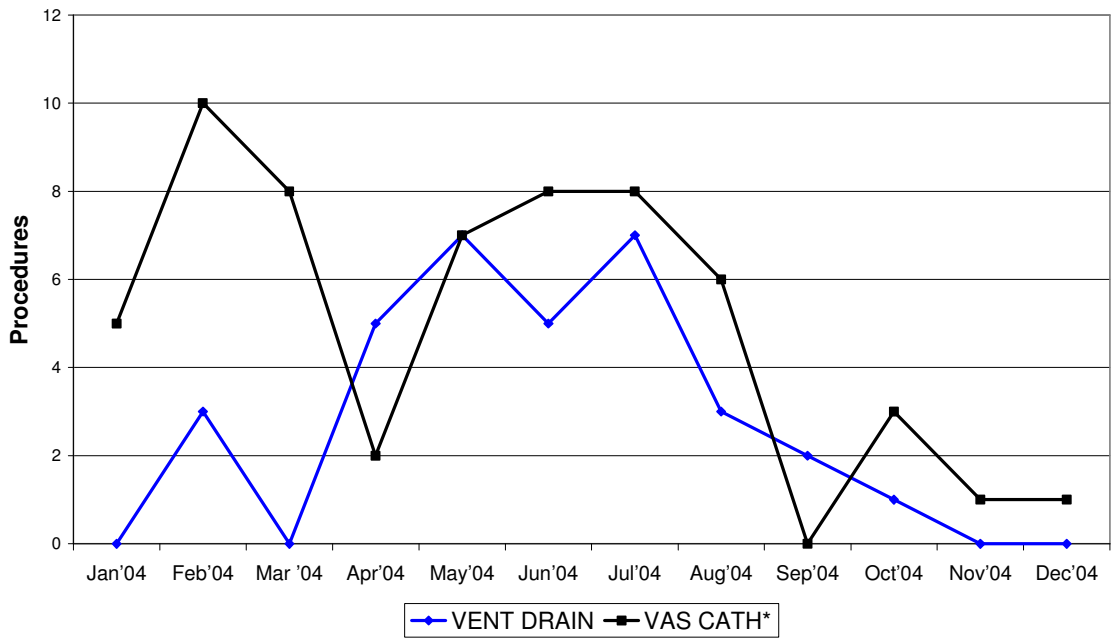
**Invasive Procedures - Central Lines 2004
3A & 5.2**



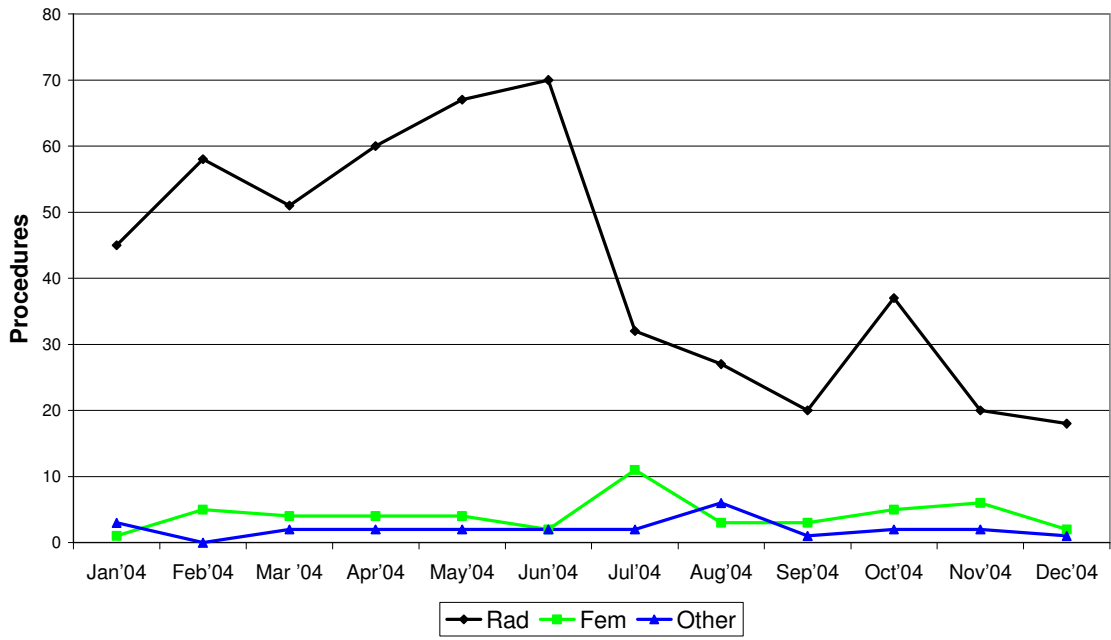
Invasive Procedures - Cordis 2004 3A & 5.2



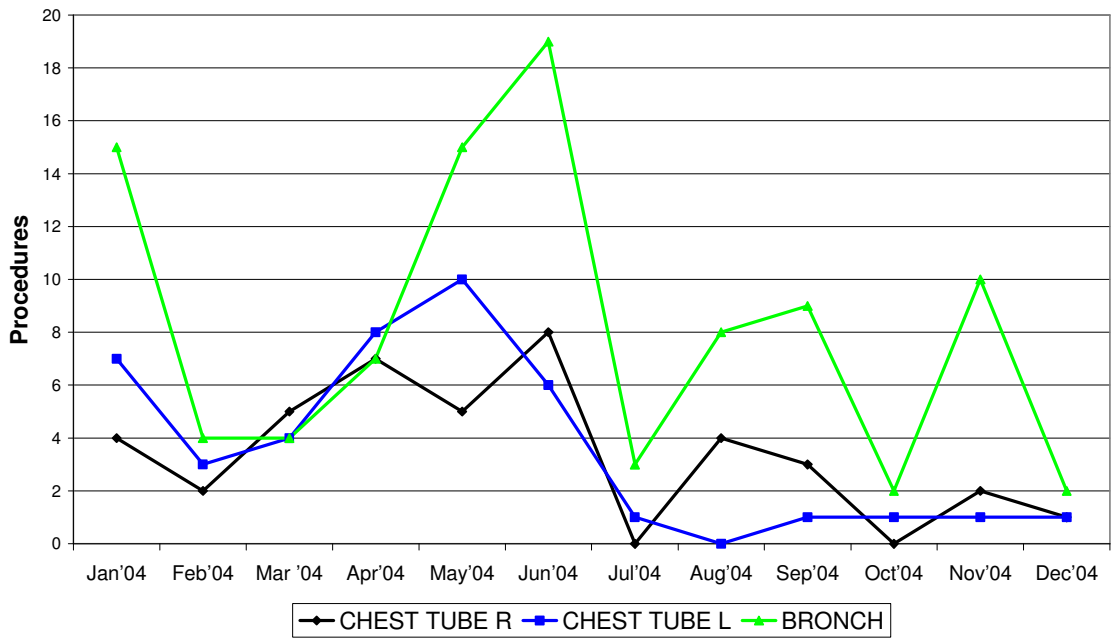
Invasive Procedures - Vent Drain & Vas Cath 2004 3A & 5.2



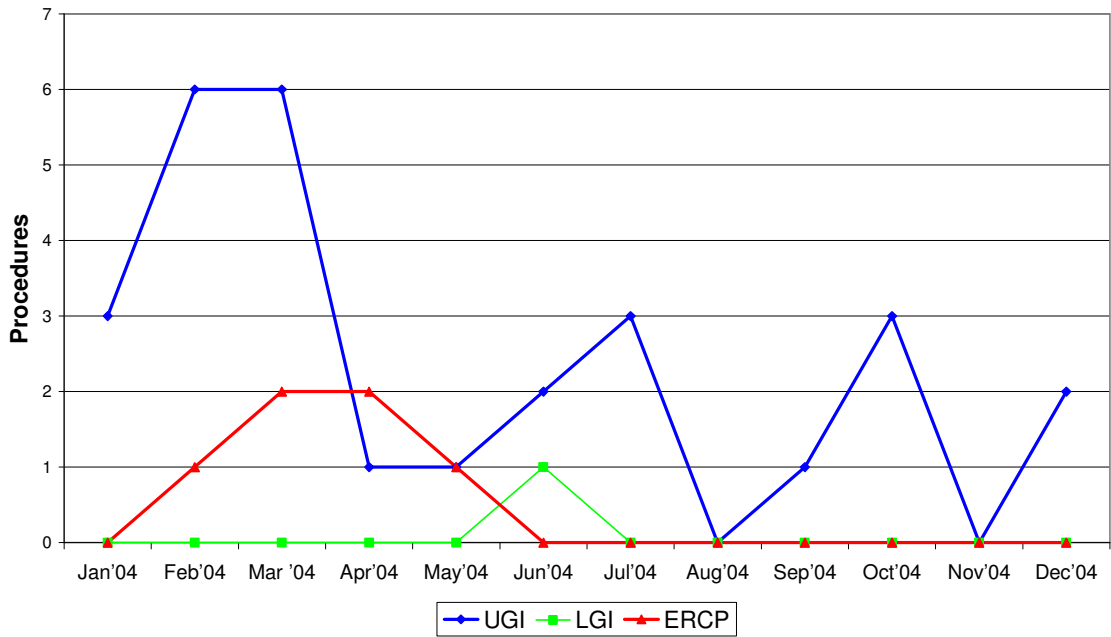
Invasive Procedures - Art Lines 2004 3A & 5.2



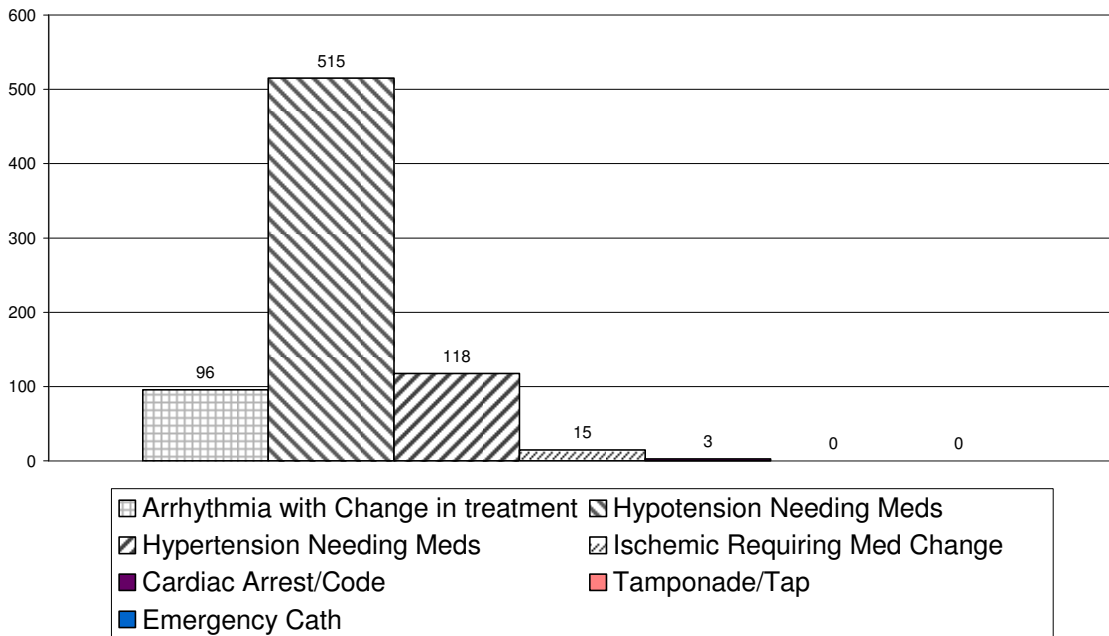
Invasive Procedures - Chest Tubes and Bronch 2004 3A & 5.2



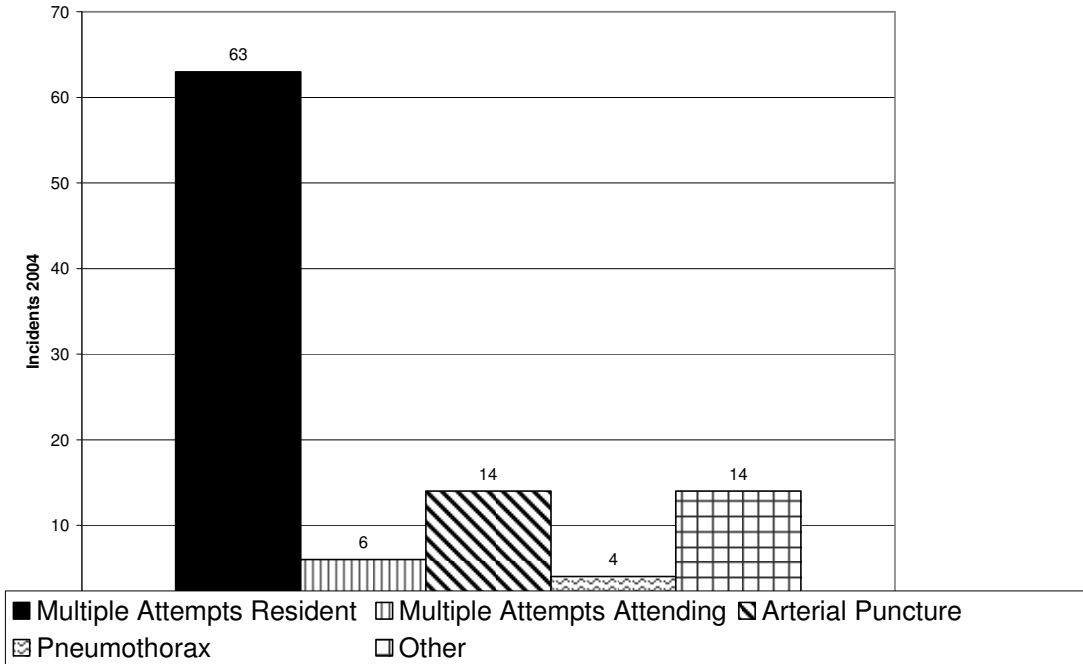
Invasive Procedures - Scopes 2004 3A & 5.2



Cardio Vascular Incidents 2004 3A & 5.2



Procedure Incidents 2004 3A & 5.2



Inappropriate Level of Care 2004 (IMCU or Floor PT in ICU bed)

